



INSTALLATION GUIDE
FOR ALL CABINETS

Instructions Cover All Cabinetry

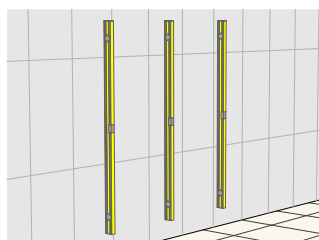
FIRST THINGS FIRST! BEFORE proceeding with installation, please check goods carefully. If goods are incorrect, faulty or damaged, DO NOT proceed with installation and contact Timberline immediately. No claims for damages/defects will be accepted after installation.

1. Ensure Your Wall Is Flat & Plumb

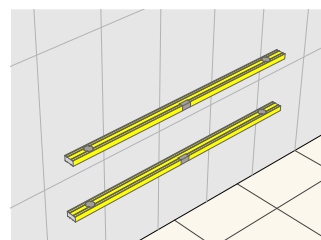
Before starting, check that your wall is plumb and flat. If not, the cabinet will need to be packed out so that it is sitting level, otherwise the cabinet will twist, causing the doors and drawers to be out of alignment and not function correctly.

It is recommended that you do NOT tile in your cabinets – tiles should extend behind the cabinet and clearance allowed for doors and drawers to open (filler panel required where cabinet is going hard against a wall).

It is recommended that vanities are installed over 300mm from any wet area such as baths, spas and showers.



Ensure wall is plumb

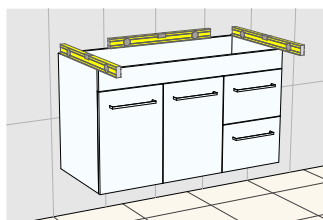


Ensure wall is flat (no gaps between wall and level)

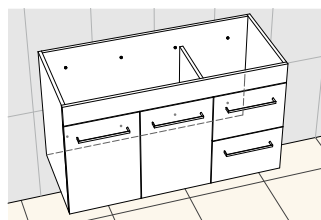
2. Fix Your Cabinet / Mirror, Making Sure It Is Level & Plumb

Fix your cabinet using screws through the solid back of the cabinet. The screws should be suited to the stud material and have a pan or counter sunk head. Provide a horizontal row of screws within 100mm vertically from the top of the cabinet at a maximum of 300mm horizontal spacing. The screws closest to the left and right edge of the cabinet should be within 100mm of each side.

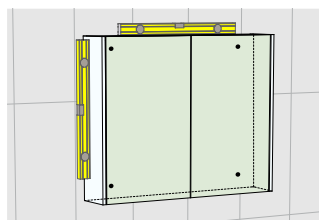
For vanities, ensure that the cabinet is level and plumb in all directions, using a spirit level. If not remove the cabinet and pack or straighten the wall accordingly. DO NOT install the top until you are sure that the cabinet is plumb and level in all directions.



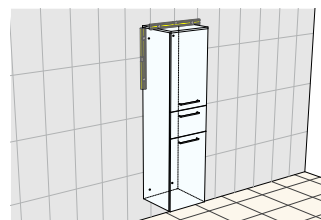
Vanities: Check cabinet is level and plumb



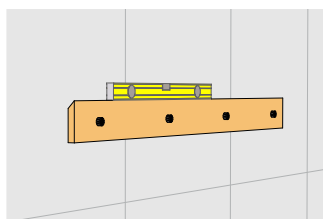
Vanities: Fix as noted above



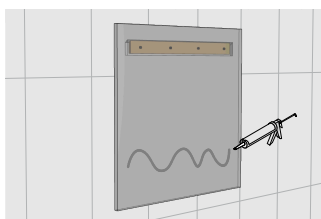
Shaving Cabinets: Fix with suitable screws in each corner and check that cabinet is level and plumb



Tallboys: Fix with suitable screws in each corner and check that cabinet is level and plumb



Mirrors: Fix mounting batten with suitable screws with maximum 300mm spacing



Mirrors: Hang mirror on mounting batten and secure with silicone

Separate flyers are available for the following, also downloadable from our website timberlinebp.com.au/downloads

- Timber Top Installation Instructions
- Splice Floating Shelf Mounting Instructions
- Splice and Milan Vanity Mounting Instructions
- Bluetooth Sound System

3. Adjust The Doors & Drawers

After installation every cabinet will need some adjustment as the doors and drawers move during transport and installation. The cabinet MUST be level before adjustments are made. It is the responsibility of the installer to ensure these adjustments are done correctly. No warranty claims will be considered until this adjustment process is completed. Refer to the instructions below.

4. Fit The Top & Seal Cabinet

For vanities, fit the top to the cabinet using a thin bead of non-acidic silicone on all four edges. Seal all cabinet edges against floor and wall to prevent water penetration. DO NOT silicone timber tops to cabinets - refer to instructions on website.

Overtightening of the waste can lead to stress and damage to the basin or top. We recommend that the wastes be tightened by hand only, and then silicone sealed.

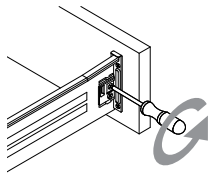
5. Something Not Quite Right?

If you have a problem - and have carefully checked all the steps above to ensure it has been done right - give us a call. We'll be glad to help. To make it easy for us, please email some photos of the problem and of the job detail label (this can be found on the underside of a drawer base) to service@timberline.com.au including photos of the levels as shown in Step 1 and Step 2 above.

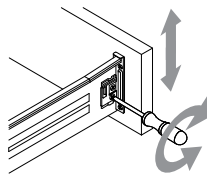
Silver Collection

Steel Drawer Adjustment | Up or Down

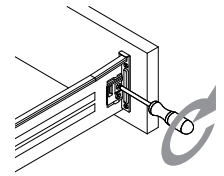
1. Loosen the centre screw.



2. Turn bottom screw to move drawer front up or down.

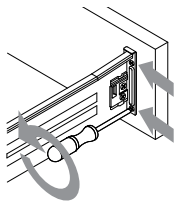


3. Tighten centre screw.

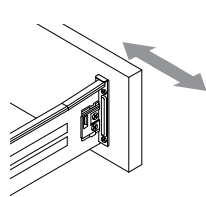


Steel Drawer Adjustment | Left or Right

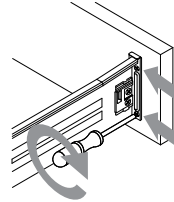
1. Loosen two drawer front screws.



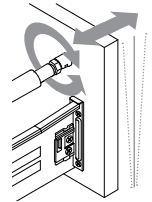
2. Slide drawer front left or right.



3. Tighten two drawer front screws.



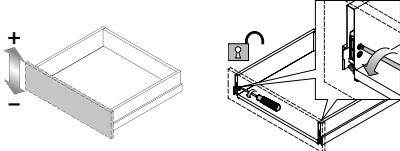
4. Adjust angle of tall drawer fronts with gallery rails by sliding cover back and adjusting plastic nut.



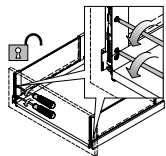
Gold & Platinum Collections

Drawer Front Height Adjustment

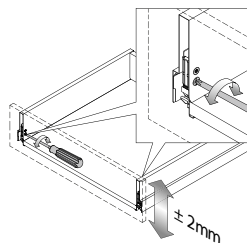
1. Turn top screws anticlockwise (quarter turn) to unlock the drawer front on both sides.



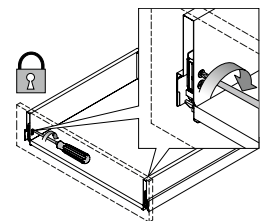
For 186mm sided drawers, both top and middle screws need to be released.



2. Turn bottom screw using small adjustments to adjust the drawer front up and down. Anticlockwise adjusts down, clockwise adjusts up. This may need to be completed on both sides of the drawer.

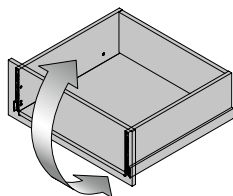


3. Turn top screws clockwise (quarter turn) to lock the drawer front back in place on both drawer sides.

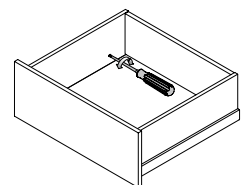


Drawer Front Tilt Adjustment

1. Locate adjustment screws at the rear of drawer sides (for 122mm and 186mm sided drawers).

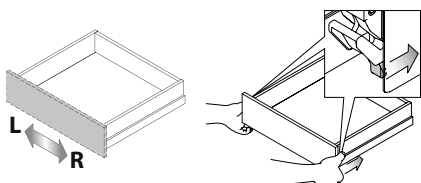


2. Adjust using small turns – turning towards the rear of the drawer tilts to the rear, turning towards the front of the drawer tilts to the front. Please note you will hear audible clicks when making these adjustments.

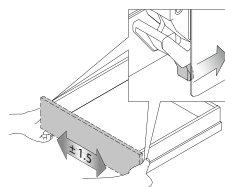


Horizontal Drawer Front Adjustment

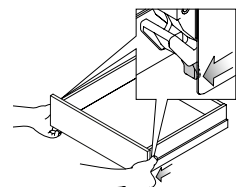
1. Push metal tabs back using index fingers. (On any drawer over 750mm, loosen the cam-lock screws using a quarter turn under the drawer base.)



2. With tabs pushed back adjust drawer front left or right using palms of hands.

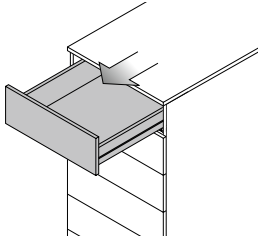


3. Release tabs to lock drawer front position (On any drawer over 750mm, tighten the cam-lock screws under the drawer base.)

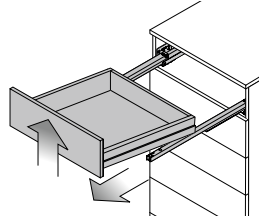


Removing the Drawer

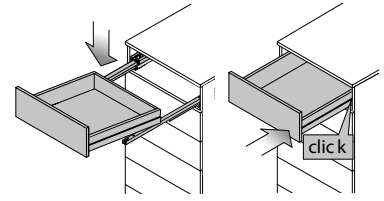
1. Open drawer to full extension.



2. Grasp the underside of the drawer front and lift drawer off the runner.



3. To replace, place drawer back on runner and push fully closed. You will hear a click as the drawer is secured.

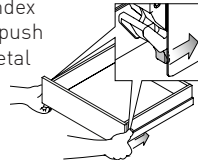


Removing the Drawer Fronts

1. Open drawer to full extension.

(On any drawer over 750mm, loosen the cam-lock screws using a quarter turn under the drawer base.)

2. Using index fingers push back metal tabs.



3. Gently pull drawer front away from drawer.

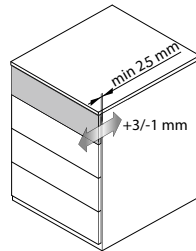
4. To replace, clip angled brackets into bottom of mechanism and push drawer front back on securely, using downward motion.

(On any drawer over 750mm, tighten the cam-lock screws under the drawer base.)

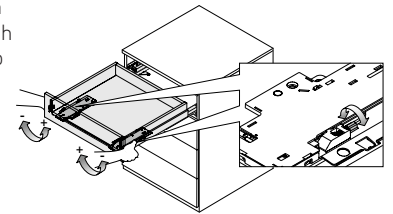
Gold & Platinum Collections

Push to Open | Front Gap Adjustment

1. Open drawer to full extension.

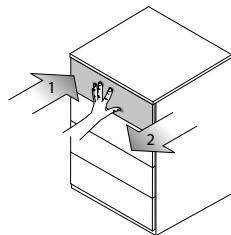


2. Under drawer, wind green rollers as indicated on both mechanisms. Optimal gap is 2.5mm between rear of drawer front and cabinet.

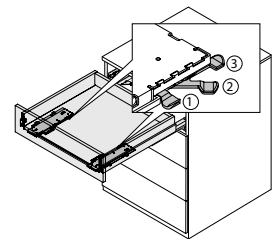


Push to Open | Opening Force Adjustment

1. Open drawer to full extension.



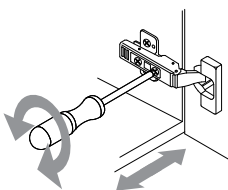
2. Adjust the green flick switch on both mechanisms. Closest to front of drawer = smallest opening force; Closest to rear of drawer = largest opening force.



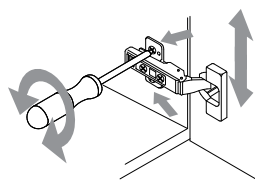
Gold & Platinum Collections

Adjustment of Door Hinges

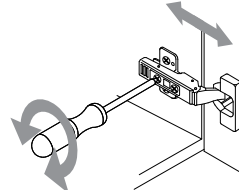
Use the front screw for left or right adjustment



Loosen two bracket screws to slide door up or down. Tighten screws.



Use the back screw for in or out adjustment



To remove door (if required) pull the clip at the back of each hinge.

