

# Straight Extra Extended Pin Lever suits 35mm Brushed Nickel

Product Code: 285872

<b>Warranty</b>	20 years - Mixer Cartridge, Body, Aerator, Hoses, Spout, Handle and Chrome Finish 10 years - Handpieces and pull-down hoses 5 years - PVD and Electroplate finishes 1 year - Seals and Labour
-----------------	--

## Product Specifications

<b>Colour</b>	Brushed Nickel
<b>Finish</b>	Electroplated
<b>Material</b>	Zinc
<b>Suits</b>	35mm cartridge mixers
<b>Handle Design</b>	Extra Extended Pin lever
<b>Handle Length</b>	175mm
<b>Handle Angle</b>	0 degrees
<b>Inclusions</b>	Hot and Cold indicator Warm and Cold indicator
<b>Maintenance &amp; care instructions</b>	Clean using a soft sponge or cloth with warm soapy water or detergent. Never use abrasive brushes or scourer pads to clean products. Rinse with water immediately after using any cleaning solution



For more information call 1800 BATHROOM (1800 228 476) or visit [raymor.com.au](http://raymor.com.au)

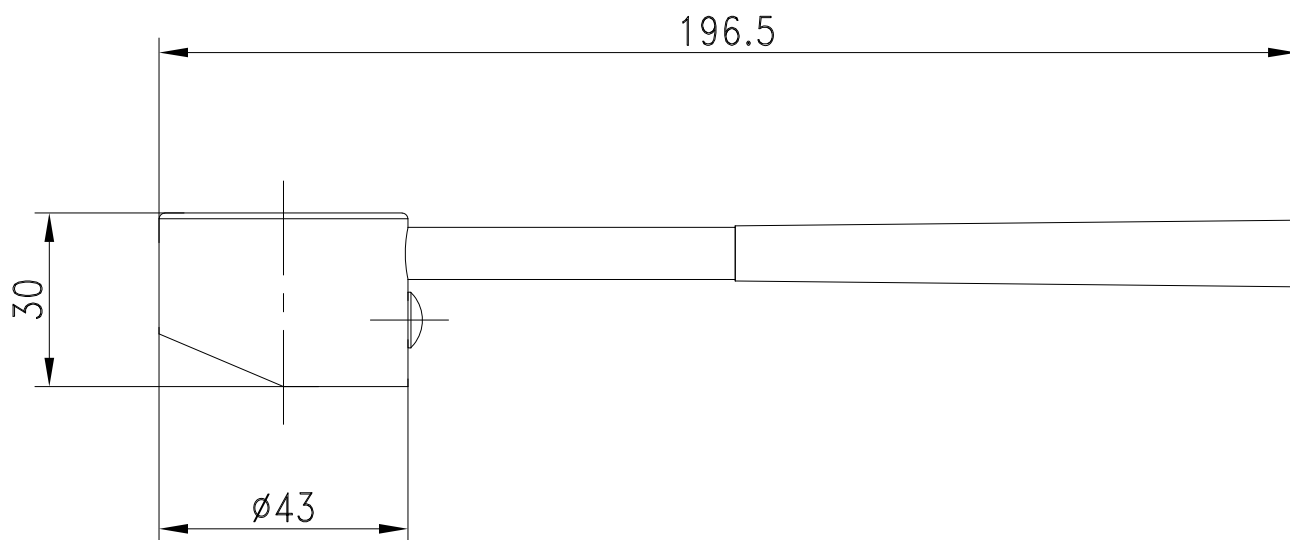
© Registered trademark of Tradelink. All dimensions are in millimetres. Dimensions are approximate and should be checked against the physical product before installation. Changes may be made to this specification without notice due to our commitment to continual improvement. See [raymor.com.au](http://raymor.com.au) for full warranty details.

**Raymor**<sup>®</sup>

# Straight Extra Extended Pin Lever suits 35mm Brushed Nickel

All dimensions in mm

Product Code: 285872



For more information call 1800 BATHROOM (1800 228 476) or visit [raymor.com.au](http://raymor.com.au)

© Registered trademark of Tradelink. All dimensions are in millimetres. Dimensions are approximate and should be checked against the physical product before installation. Changes may be made to this specification without notice due to our commitment to continual improvement. See [raymor.com.au](http://raymor.com.au) for full warranty details.

**Raymor**<sup>®</sup>