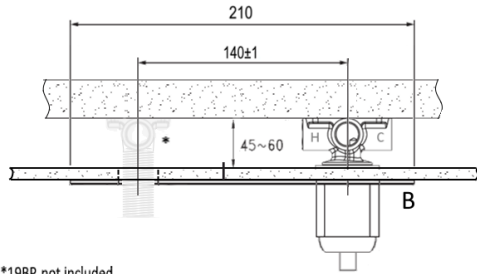
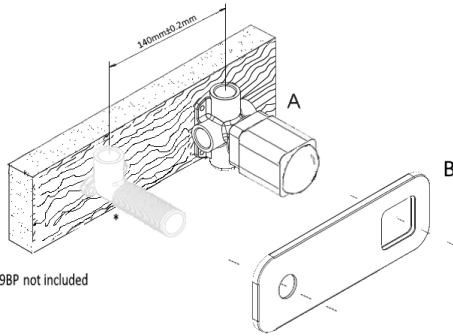


# Installation Instructions

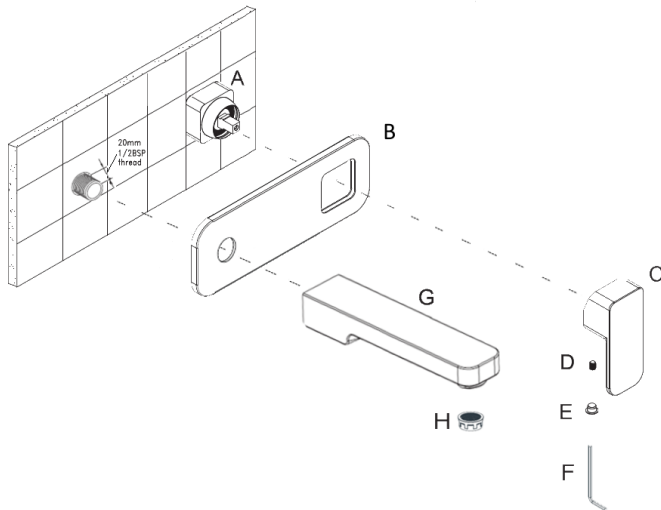
## 152830/152831/152832/152833/202997/202998 SIGMA WALL MIXER SET W/ SPOUT



\*19BP not included



\*19BP not included



### Important Information

This Product is to be installed by a licensed plumber, installation must comply with the AS/NZS 3500 *f q, v f* r d, l | p l , p f, Plumbing Code of Australia (PCA) and local regulatory requirements. Please leave this document with the Product after installation.

Ensure that the lines are flushed prior to installation as contaminants in the water can damage the ceramic disc SBAs, O-rings and flow regulators and affect the performance of the Product.

Please leave this document with the Product after installation.

Before installation, remove Product from packaging and check the Product matches what you have ordered, is complete with all parts (per exploded drawing) and is not damaged. **If the Product is incorrect, damaged or missing parts DO NOT install and return to store** with proof of purchase for a refund or replacement. Installed Products are warranted for genuine manufacturing defects arising in your Product during the course of normal domestic or commercial use for the term of the warranty period. Our manufacturer's warranty does not cover Product which are incorrect or have been installed with pre-existing damage or missing parts.

### Pressure & Temperatures

- Maximum Hydrostatic Pressure - **500kPa**. AS/NZS3500.1:2021 (Clause 3.3.2) states "The maximum static pressure at any outlet, other than a fire service outlet, within a building shall not exceed 500 kPa. NOTE Pressures above 500 kPa can cause damage from water hammer, reduced life of appliances, taps and fittings, and cause excessive noise in the system.

- Minimum Hydrostatic Pressure - **150kPa**. This Product may not be suitable for use with a gravity fed water supply, unequal pressure or with continuous flow or instantaneous hot water systems.

- Maximum operating temperature - **70°C**.

### Installation Instructions

Per AS/NZS 3500.1 Section 17.3.1 (Hydrostatic Testing) when a pressure test is carried out, it may be necessary to disconnect and cap the water service to isolate it from the water main, fixtures and appliances, which may be damaged by the test pressure applied.

**NB.** Mixer cartridges are designed to be hydrostatically tested in the closed position only; testing a mixer cartridge in the open position at greater than 500kPa will damage the cartridge which can result in escape of water and will void warranty. Accordingly, for fixtures such as shower mixers, shower diverter mixers and wall mixer sets which cannot be easily isolated, the pipework from the mixer body to the bath or shower outlet must be independently tested.

**NB.** Shower/Bath Mixers (Not Divertor Mixers) are a four Port Body with a Brass Threaded Bung screwed into the Bath outlet port. for Bath installation move the threaded Brass Bung to the Shower outlet port. DO NOT turn Mixer upside down as the Mixer will not function correctly.

1. Screw Mixer Body (A) and 19BP (not included) to the Stud Wall or Brick Cavity, taking into account set out minimum and maximum from back of Mixer to Finished Wall (I). **NB.** Mixer body and 19BP centres must be 140mm apart. Use the supplied Wall plate (B) to confirm spacing and fit.
2. Install Water supply to Mixer body, Left (Hot), Right (Cold) and install water supply line (not included) from Mixer body outlet (Top) to the 19BP per AS3500 and Local Authority requirements.
3. Once wall sheeting and tiles have been filled, seal around the base of the Mixer body with plumbing grade silicone or sealing compound.
4. Slide Mixer Wall plate (B) in place. **NB.** Wall Plates are fitted with concealed sealing washers. To assist with assembly of the wall plate, apply soapy water or plumbing grade lubricant to the concealed sealing washers.
5. Fit Mixer Handle (C) and screw in Handle Grub Screw (D) using allen key (F)
6. Fit Handle Grub screw cover (E).
7. Slide wall plate (B) onto ½" BSP thread ensuring sealing rubber (A) is in place on the back of the wall plate (B).
8. Apply sufficient thread seal tape to the ½" BSP thread (do not overload thread with thread seal tape as this will put undue pressure on bath spout (C).
9. Screw Bath Spout (C) onto ½" BSP thread. **NB.** The Wall Basin/Bath spout is pre-fitted with a flow regulated aerator. If the spout is being used over a bath, the aerator is to be removed and then fitted with open flow regulator(D).
10. Test to confirm correct operation and check for leaks.