

# Edge II Single Bowl Universal Mount Sink Gunmetal.

Product Code: 290606



## Product Specifications.

<b>Colour</b>	Gunmetal	<b>Bowl 1 Size &amp; Capacity</b>	27L
<b>Warranty</b>	25 years - sink & tub body 5 years - wastes and clips 1 year - seals and labour	<b>Inclusions</b>	1 x 90mm A3 basket waste 1 x Bowl protector Top and under mount clips Cutout template Sealing tape
<b>Material</b>	304 grade 18/10 stainless steel	<b>Maintenance &amp; Care</b>	Surfaces should be regularly cleaned with a soft, dampened cloth or sponge with warm, soapy water. Do not use abrasive brushes, scourers or harsh chemicals as these can damage the finish
<b>Configuration</b>	Single Bowl		
<b>Installation Type</b>	Universal - Top, Under or Flush mount		
<b>Design</b>	10mm radius corners		
<b>Tap Hole</b>	0		
<b>Finish</b>	Satin Brushed PVD with Nano coating		
<b>Construction</b>	Drawn		
<b>Width</b>	440mm		
<b>Height</b>	380mm		
<b>Depth</b>	200mm		

For more information call 1800 BATHROOM (1800 228 476) or visit [raymor.com.au](http://raymor.com.au)

© Registered trademark of Tradelink. All dimensions are in millimetres. Dimensions are approximate and should be checked against the physical product before installation. Changes may be made to this specification without notice due to our commitment to continual improvement. See [raymor.com.au](http://raymor.com.au) for full warranty details.

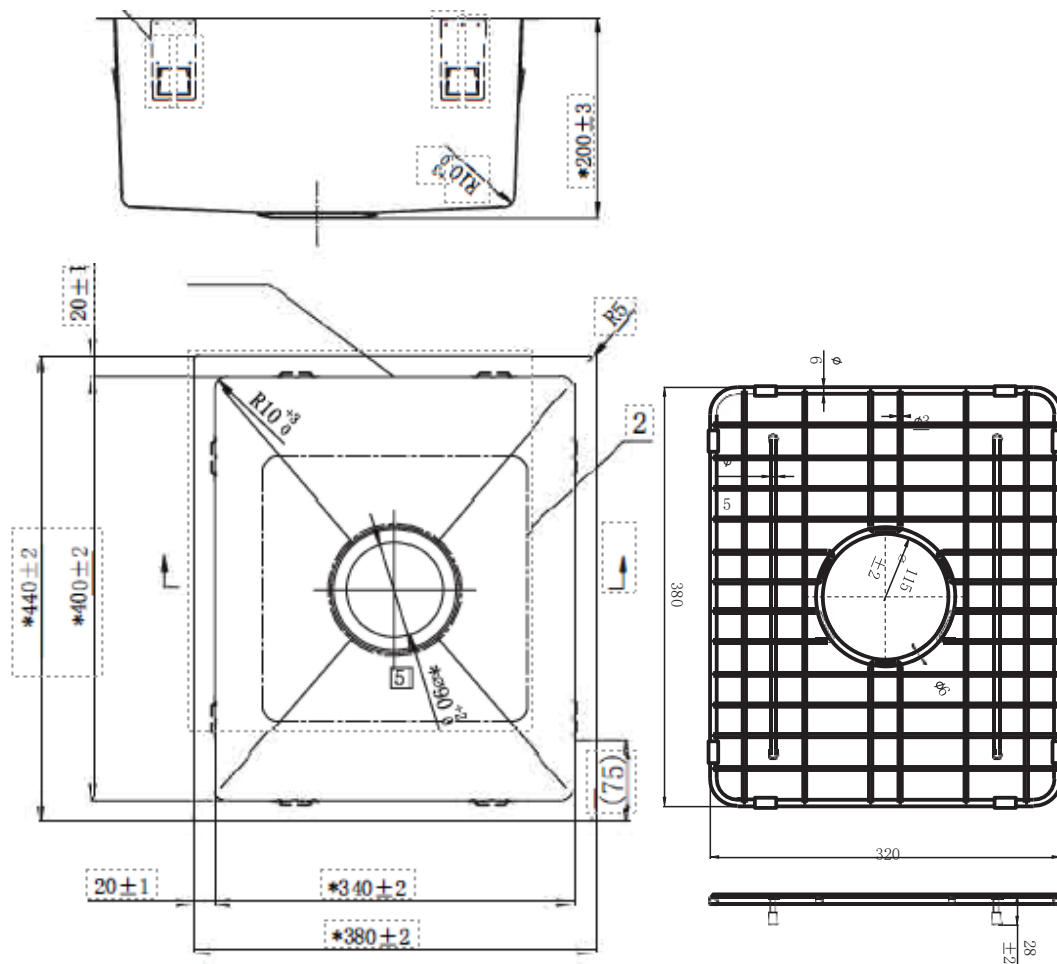
All dimensions in mm.

Version 1

**raymor**

# Edge II Single Bowl Universal Mount Sink Gunmetal.

Product Code: 290606



For more information call 1800 BATHROOM (1800 228 476) or visit [raymor.com.au](http://raymor.com.au)

® Registered trademark of Tradelink. All dimensions are in millimetres. Dimensions are approximate and should be checked against the physical product before installation. Changes may be made to this specification without notice due to our commitment to continual improvement. See [raymor.com.au](http://raymor.com.au) for full warranty details.  
All dimensions in mm.

Version 1

raymor