

## GENERAL INFORMATION

- Alex group aus pty ltd reserves the right to make changes in product characteristics, packaging or availability at any time without notice.
- Please visit [www.aulic.com.au](http://www.aulic.com.au) for the latest information.

Aulic

# AULIC

LED  
Mirror

## INSTALLATION INSTRUCTION

CARE, MAINTENANCE AND WARRANTY



**THANK YOU FOR BUYING AULIC TOUCH FREE LED LIGHT MIRROR.**

**AT AULIC WE PRIDE OURSELVES IN SUPPLYING PRODUCTS WITH HIGH QUALITY.**

**TO ENSURE THIS MIRROR IS SAFELY FITTED AND PERFORMING ITS BEST OUTCOME, PLEASE READ THIS MANUAL CAREFULLY BEFORE INSTALLATION BEGINS.**

## INSTALLATION SAFETY INFORMATION

- This mirror must be installed by a licensed and registered electrician in accordance with local regulations.
- Make sure to check the product for any defects or damages before a installation takes place.
- Always to follow the manufacturer's instructions for installation and safety.

## SAFETY INSTALLATION & USE GUIDE

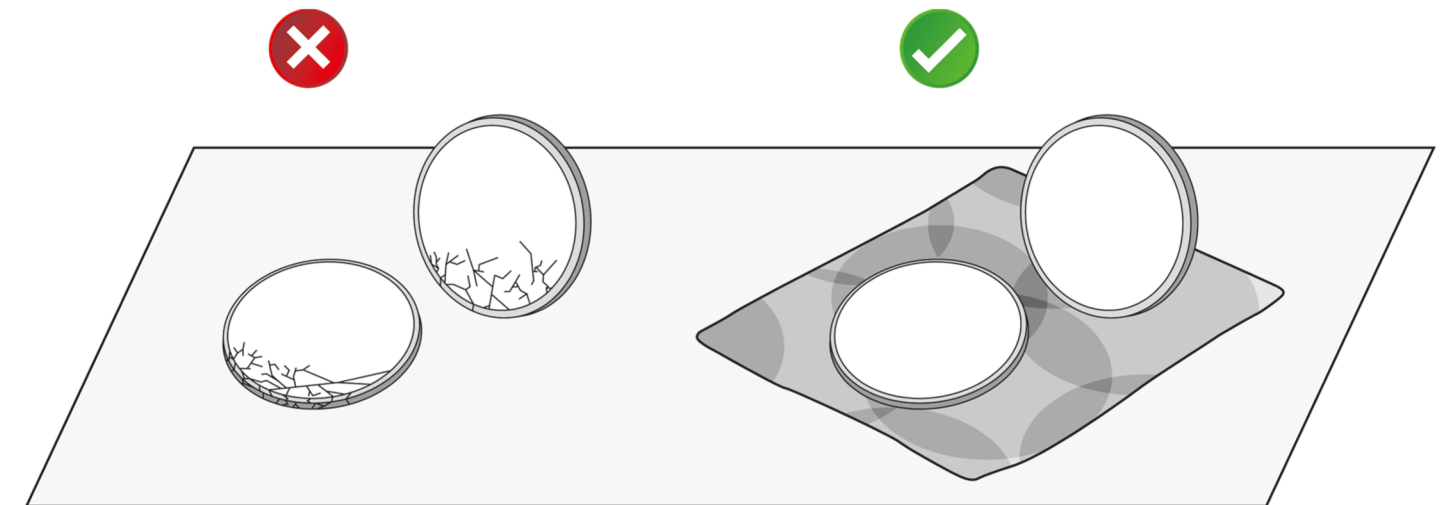
- Installation must be carried out by a licensed electrician in accordance with local regulations.
- Two-people is recommended to install this mirror.
- This mirror is not suitable to use in steam, saunas room. (refer to IP zone diagram)
- Warranty will not cover if any modification is made.
- Power circuit protection should be available for this mirror.
- This product is IP44 rated and could be installed in Zones 2 and outside of Zone in compliance with the IEEE regulations.

## HANDLING TIPS



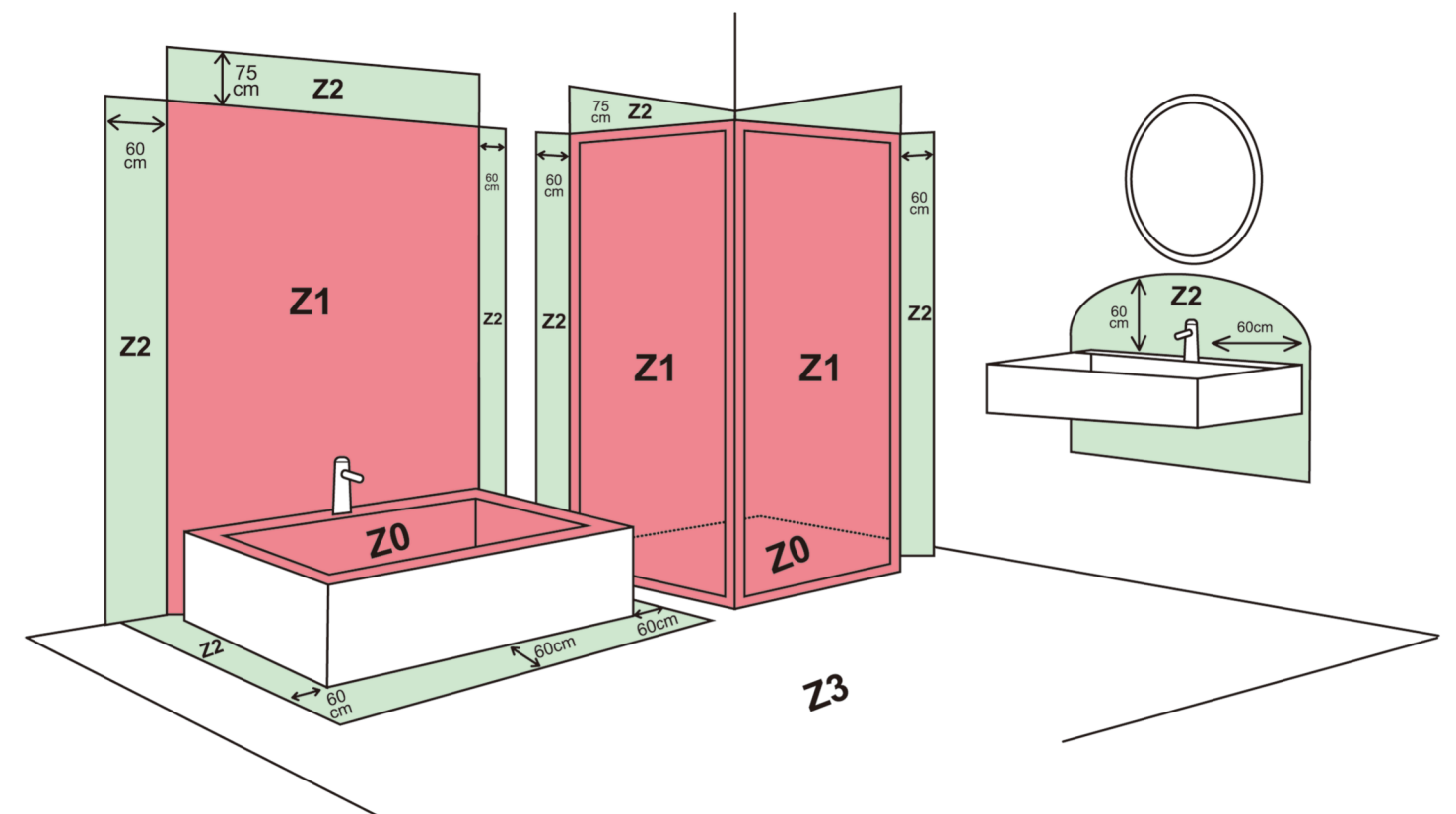
**Aulic recommend not to place this mirror on a hard or rough surface.**

Please measure carefully before installing the hanging system, use the appropriate wall fixings to install this mirror.



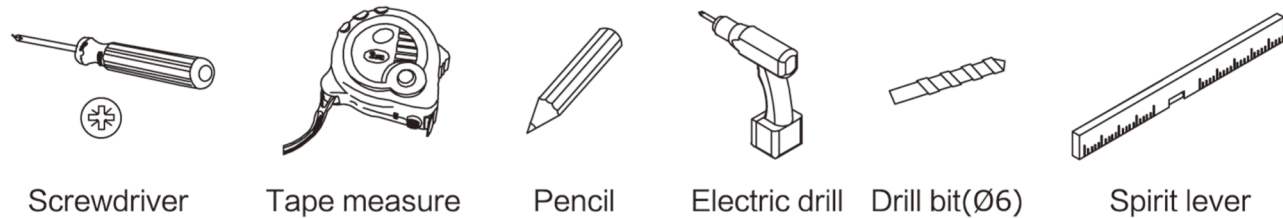
Aulic recommend not to place this mirror on a hard or rough surface.

## IP44 ZONE DIAGRAM

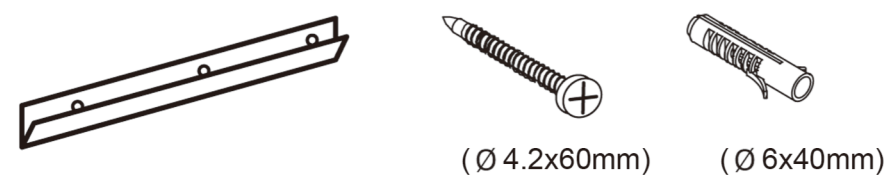


## HANDLING TIPS

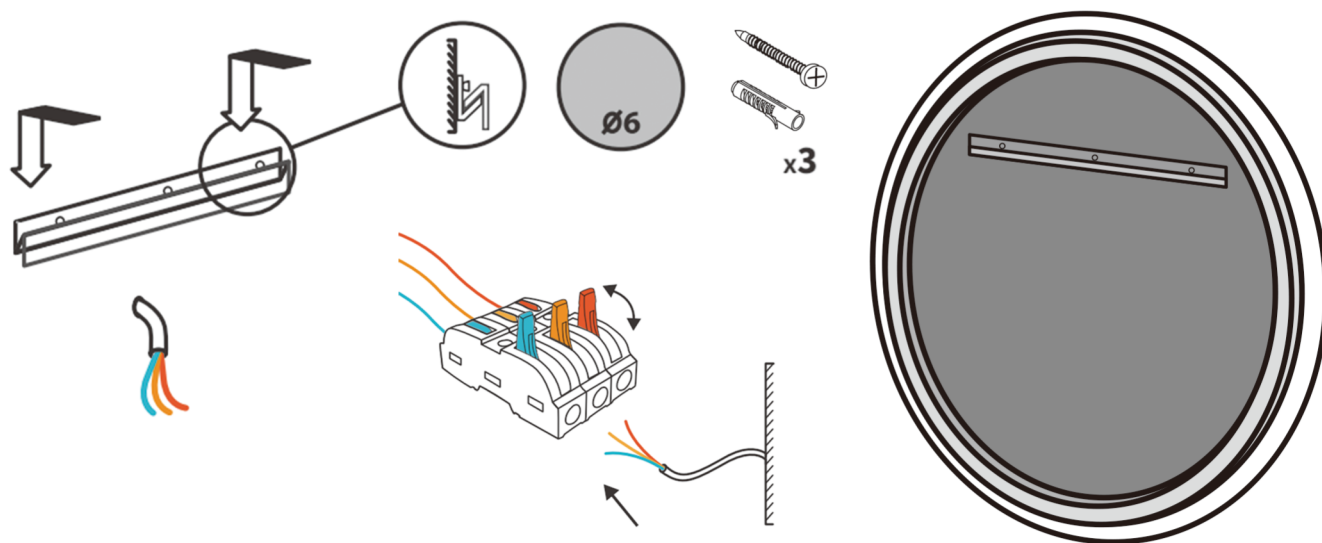
### REQUIRED TOOLS



### SUPPLIED SPARE PART



### INSTALL



## MIRROR OPERATION

The mirror is in touching less design, will effectively avoid fingerprints.



### TURNING ON/OFF

- Wave your hand over the sensor to turn on / off your Led Light.



### DIMMER

- Hold your hand at the sensor for light dimming.  
(Hand scan distance: 1-5cm)



### MIRROR DEMISTER

- This mirror comes with a build-in demister.  
(Demister will be activated when Led Light is on)

## MIRROR OPERATION

For a best result, clean the mirror with a combination of 30% isopropyl alcohol and 70% water and a soft, non-abrasive cloth designed for glass surface.