

# Installation Instructions

## 290626/290627/290628 Alpha Hand Shower 3 Function

### Important Information

This Product is to be installed by a licensed plumber, installation must comply with the AS/NZS 3500 series of Standards, Plumbing Code of Australia (PCA) and local regulatory requirements. Please leave this document with the Product after installation.

Please ensure that the lines are flushed prior to installation as contaminants in the water can damage the shower head, hose, seals and flow regulators and affect the performance of the Product. The WELS compliant aerator has been pre-assembled into the outlet (where applicable). To comply with WELS the flow regulated aerator must remain in place.

Please leave this document with the Product after installation.

Before installation, remove Product from packaging and check the Product matches what you have ordered, is complete with all parts (per exploded drawing) and is not damaged. **If the Product is incorrect, damaged or missing parts DO NOT install and return to store** with proof of purchase for a refund or replacement. Installed Products are warranted for genuine manufacturing defects arising in your Product during the course of normal domestic or commercial use for the term of the warranty period. Our manufacturer's warranty does not cover Product which are incorrect or have been installed with pre-existing damage or missing parts.

### Pressure & Temperatures

- Maximum Hydrostatic Pressure - **500kPa**. AS/NZS3500.1:2021 (Clause 3.3.2) states "The maximum static pressure at any outlet, other than a fire service outlet, within a building shall not exceed 500 kPa. NOTE Pressures above 500 kPa can cause damage from water hammer, reduced life of appliances, taps and fittings, and cause excessive noise in the system.

- Minimum Hydrostatic Pressure - **150kPa**. This Product may not be suitable for use with a gravity fed water supply, unequal pressure or with continuous flow or instantaneous hot water systems.

- Maximum operating temperature - 70°C.

### Installation Instructions

1. Apply thread seal tape to the 1/2" BSP male thread (A). Loosen grub screw in mains inlet wall post and remove 1/2" BSP connector.

**N.B.** Do not overload thread seal tape as this will put undue pressure on the wall post.

Screw 1/2" BSP connector (B) to 1/2" BSP male thread (A) and tighten.

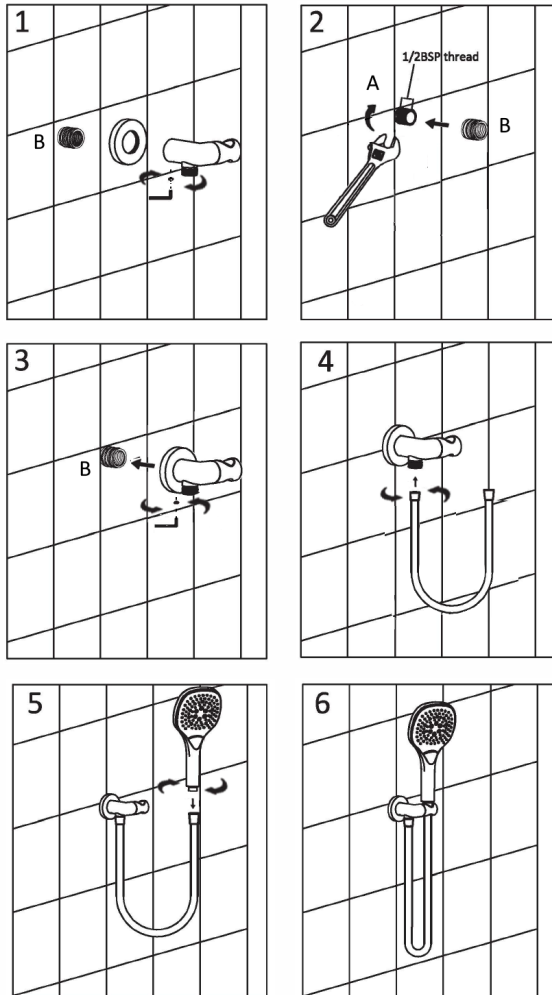
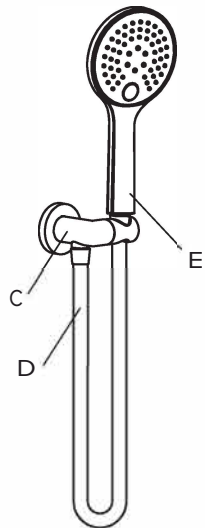
2. Slide the mains inlet wall post (C) onto the 1/2" BSP connector (B).

3. Tighten fitting with allen key supplied. Slide wall plate flush with finished wall.

4. Screw shower hose (D) mains inlet wall post (C) ensuring sealing washer is in place.

5. Screw hand piece (E) to shower hose (D) ensuring flow regulator is in the hand piece and sealing washer is in the hose.

6. Test for correct operation and check for leaks.



- 1. 1/2BSP Male Thread
- 2. 1/2 BSP Connector
- 3. Mains Inlet Wall Post
- 4. Shower Hose
- 5. Hand Piece