

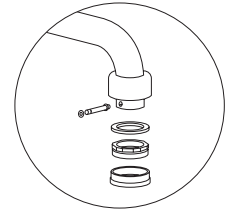
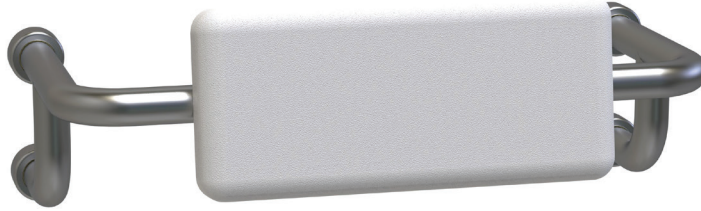
Care Accessories

ACCBRRC

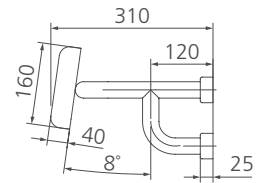
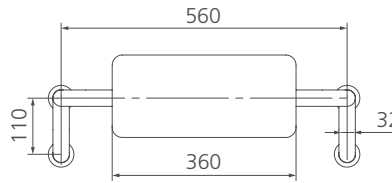
Care Toilet Backrest

Can be installed to comply with AS 1428.1

All dimensions in mm



Concealed brass fixing mechanism



Specifications /

Rail size	Diameter 32mm
Application	Domestic and commercial care
Fixing	Brass base and connector with secure flange pin and cover to conceal wall fixings
Installation	Wall mounted. Can be installed to comply with AS 1428.1
Materials	Satin stainless steel 304 (1.2mm thick railing tube) Polyethene cushion
Weight	3.2kg
Parts list	Backrest, flange covers and fixings
Commercial warranty	5 years replacement parts and 1 year labour (refer to oliveri.com.au)
Maintenance and care instructions	All surfaces should be cleaned with mild liquid detergent or soap and water. Do not use cream cleaners or citrus based cleaning products, as they are abrasive. Use of unsuitable cleaning agents may damage the surface. Any damage caused in this way will not be covered by warranty.