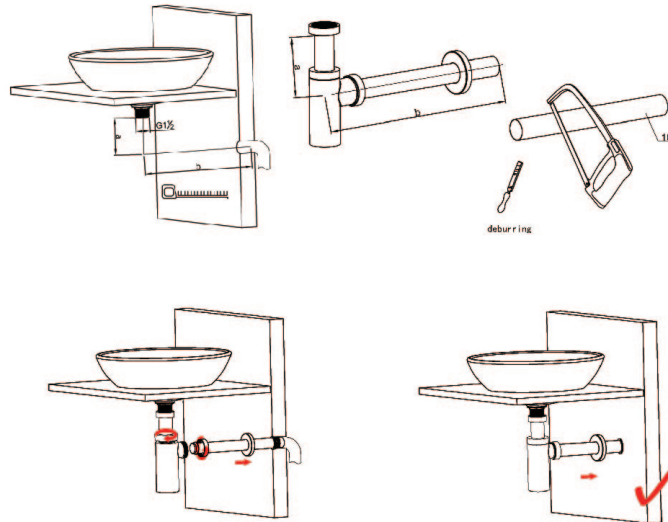
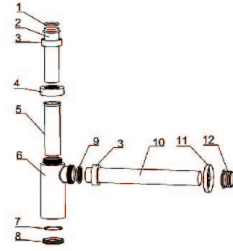
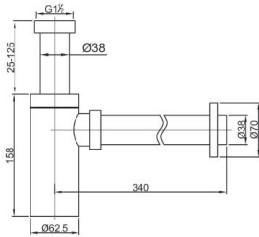


Revision Date: 9 Jan 2024
Revision Number: 3.0

Installation Instructions

295496/295497/295498 Adjustable Bottle Trap Round 40mm

raymor



Important Information

This product is to be installed by a licensed plumber, installation must comply with AS/NZS 3500 and relevant plumbing codes. Please leave this document with the Product after installation. This Raymor bottle trap is manufactured to AS 1589.

Before installation, remove Product from packaging and check the Product matches what you have ordered, is complete with all parts (per exploded drawing) and is not damaged. **If the Product is incorrect, damaged or missing parts DO NOT install and return to store** with proof of purchase for a refund or replacement. Installed Products are warranted for genuine manufacturing defects arising in your Product during the course of normal domestic or commercial use for the term of the warranty period. Our manufacturer's warranty does not cover Product which are incorrect or have been installed with pre-existing damage or missing parts.

Installation Instructions

The inlet of this bottle trap is compatible with a 40mm waste connection. The outlet key seal of this bottle trap is designed to suit a 40mm PVC DWV socket.

1. Cut the DWV Pipe so that between 1mm to 5mm protrudes through the wall or vanity cabinet back. Ensure the pipe is cut square and deburr.
2. Connect Bottle trap inlet pipe (2) to the waste outlet using Sealing washer (1) and compression Nut (3). Do not fully tighten; adjustment will be needed during installation.
3. Apply plumber's grade lubricant or soapy water to one end of the Outlet pipe (10). Fit Key seal (12) onto the end of Outlet pipe (10).
4. Insert the assembled Outlet pipe (10) and Key seal (12) into DWV pipe, until Key seal's raised lip meets the DWV pipe.
5. Loosen Compression nut (4) then adjust height of Bottle trap inlet pipe (2). Note: Ensure a minimum 1.5° fall (per AS/NZS 3500.2).
6. Position the Bottle trap outlet towards the DWV pipe. Measure the Outlet pipe and make a mark 30mm past the face of Compression nut (3), to ensure sufficient length for sealing. Cut the Outlet pipe (10) at the mark using a pipe cutter and deburr. Slide the Wall flange (11) onto the Outlet pipe.
7. Disconnect Bottle trap from waste outlet. Assemble Outlet pipe (10) to Bottle trap using Tapered washer (9) and Compression nut (3). Do not fully tighten.
8. Lubricate Key seal (9) on end of Outlet pipe, Push Key seal and Outlet pipe into DWV pipe.
9. Re-fit Bottle trap to the waste outlet. Adjust Bottle trap position and height, then tighten all connections.
10. Fill basin with water, test for correct function, and check for leaks. Care & Maintenance Avoid using abrasive or acid based cleaning products.

To clean the bottle waste trap, unscrew the large threaded Bung (8) at the base of the bottle trap. Clean any waste from the bottle trap, clean the O-ring seal (7) and reassemble the threaded Bung (8).

Care & Maintenance

Avoid using abrasive or acid based cleaning products.

To clean the bottle waste trap, unscrew the large threaded Bung (8) at the base of the bottle trap. Clean any waste from the bottle trap, clean the O-ring seal (7) and reassemble the threaded Bung (8).