

# Ascot Floor or Wall Mount Slim Vanity 765mm 2 Draw LH 1 Door

Product Code: N/A



## Product Specifications.

### Installation type

### Colour

### Finish

**Warranty** 10 years - cabinet - vanities, mirrored cabinets (excluding mirror)  
7 years - hardware, runners, hinges  
5 years - vitreous china top  
1 year - mirrors ( including mirrored surfaces on cabinets), plug and waste, overflow rings, seals and labour

**Width** 765mm

**Height** Floor Standing 850mm / Wall Hung 700mm

**Depth** 365mm

**Top type** Moulded top with intergrated basin

**Top Material** Vitreous china

**No. Bowls** 1

**Bowl Orientation** Centre

**Tap Hole** 1

**Tap Hole Orientation** 12 o'clock

**Overflow** Yes

**Plug & Waste Included** Yes - Chrome mushroom pop up plug and waste

### Cabinet Material

Laminated FSC certified E0 MR MDF and HMR particle board

**No. Draws** 2

**No. Doors** 1

**Door & Draw Configuration** LH Draws, RH Door

**Handle Type** Finger pull

**Runners and Hinges** Soft close door hinges and draw runners

**Other variants available** See next page

**Inclusions** Vanity top  
Cabinet with detachable kick  
Chrome mushroom pop up plug and waste  
Chrome black and white overflow covers  
Install instructions

**Maintenance & Care** Goods used in construction are moisture-resistant, but not water-proof. It is important that your bathroom has sufficient ventilation. High humidity will lead to permanent dampness and mould, resulting in deterioration. Care must always be taken to dry any excessive moisture or water spillage. All cabinets should be installed at least 300mm away from showers or bathtubs. To maintain the finish on your cabinet and ceramic top use only a soft cloth and weak solution of non-abrasive detergent.

For more information call 1800 BATHROOM (1800 228 476) or visit [raymor.com.au](http://raymor.com.au)

© Registered trademark of Tradelink. All dimensions are in millimetres. Dimensions are approximate and should be checked against the physical product before installation. Changes may be made to this specification without notice due to our commitment to continual improvement. See [raymor.com.au](http://raymor.com.au) for full warranty details.

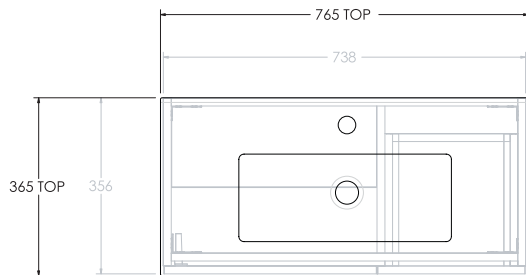
All dimensions in mm.

Version 1

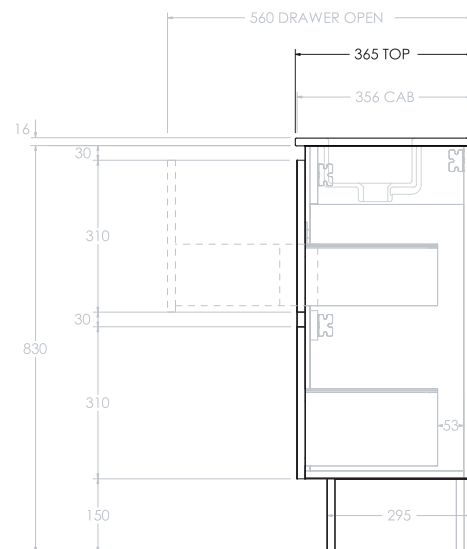
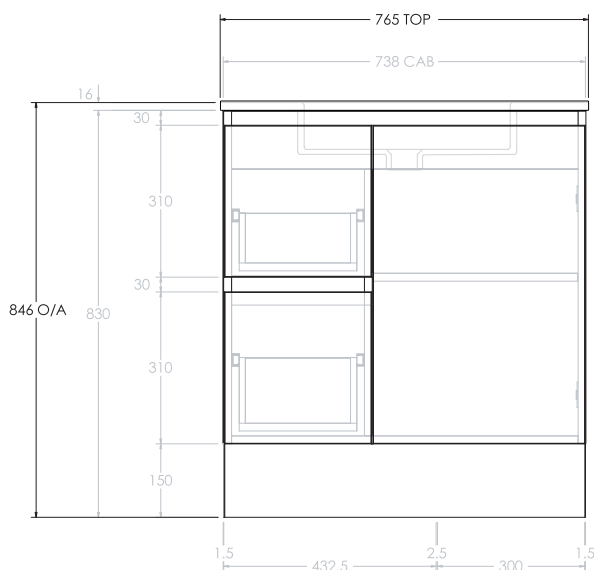
**raymor**

# Ascot Floor or Wall Mount Slim Vanity 765mm 2 Draw LH 1 Door.

Product Code: N/A



**NOTE:** Dimensions are nominal. Do not drill or rough in until you received and measured vanity. Do not measure from drawing. Due to the nature of the material and manufacturing ceramic top sizes and detail may vary +/- 10mm.



Polar White  
(Gloss or  
Matte)



Natural  
Walnut Silk  
(Matte)



Plantation  
Ash Silk  
(Matte)



Palmera  
Oak Silk  
(Matte)



Amaro Silk  
(Matte)



Grey  
Nouveau  
(Matte)



Black Silk  
(Matte)



Oxford Silk  
(Matte)

## Other variants available

299677 Ascot Floor or Wall Mount Slim Vanity 765mm 2 Draw LH 1 Door Polar White Gloss  
 299675 Ascot Floor or Wall Mount Slim Vanity 765mm 2 Draw LH 1 Door Polar White Matte  
 299673 Ascot Floor or Wall Mount Slim Vanity 765mm 2 Draw LH 1 Door Amaro  
 299638 Ascot Floor or Wall Mount Slim Vanity 765mm 2 Draw LH 1 Door Plantation Ash  
 299637 Ascot Floor or Wall Mount Slim Vanity 765mm 2 Draw LH 1 Door Natural Walnut  
 299636 Ascot Floor or Wall Mount Slim Vanity 765mm 2 Draw LH 1 Door Palomera Oak  
 299647 Ascot Floor or Wall Mount Slim Vanity 765mm 2 Draw LH 1 Door Grey Nouveau  
 299645 Ascot Floor or Wall Mount Slim Vanity 765mm 2 Draw LH 1 Door Oxford  
 299643 Ascot Floor or Wall Mount Slim Vanity 765mm 2 Draw LH 1 Door Black

For more information call 1800 BATHROOM (1800 228 476) or visit [raymor.com.au](http://raymor.com.au)

® Registered trademark of Tradelink. All dimensions are in millimetres. Dimensions are approximate and should be checked against the physical product before installation. Changes may be made to this specification without notice due to our commitment to continual improvement. See [raymor.com.au](http://raymor.com.au) for full warranty details.

All dimensions in mm.  
Version 1

**raymor**