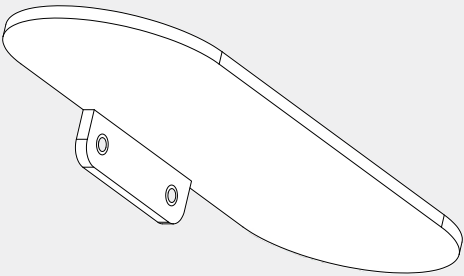


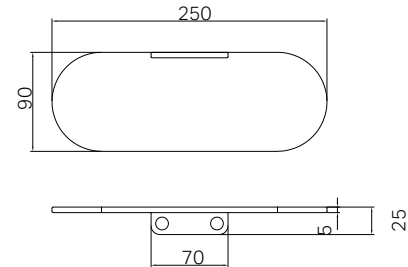
Zen SS316L Soap Dish Holder

Nero



Versions:202405

Drawing




Features


- 316L grade stainless steel construction for durability
- Easy to install

Packaging Includes

1x Soap Dish Holder

Finish & SKU

 **Brushed Bronze**
NR1681BZ

 **Brushed Gold**
NR1681BG

 **Graphite**
NR1681GR

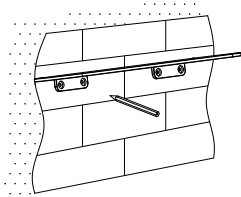
 **Brushed Nickel**
NR1681BN

*Dimensions are nominal measurements only.

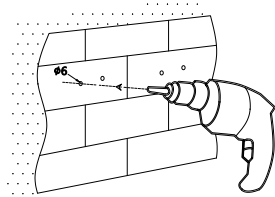
Installation Instruction

GENERAL PRECAUTIONS AND WARNINGS

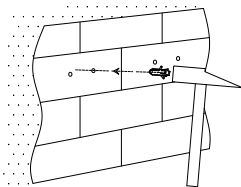
- Before installation, make sure the wall surface is clean and dry to ensure a secure attachment.
- When tightening screws, do not apply excessive force to prevent damage to the wall or the fixtures.
- Use the correct tools: a drill with a 6mm bit, screwdriver, and level.
- Wear appropriate safety gear, such as gloves and safety glasses, to protect yourself during installation.
- Before drilling, check the wall for any hidden pipes or electrical wires to avoid accidental damage.
- Ensure all measurements are accurate before drilling holes to prevent misalignment of the accessories.



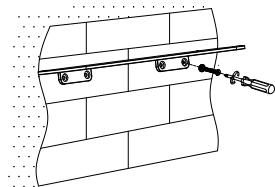
1. Place the towel bar in the desired installation position.
Use a level to ensure the towel bar is horizontal. Mark the positions directly below the bases with a marking pen.



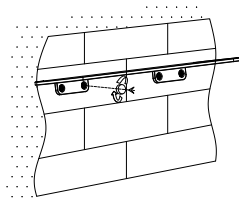
2. Position the fixing blocks at the marked spots. Mark the drilling points through the fixing block holes.



3. Use an electric drill with a 6mm drill bit to drill holes at the marked points.



4. Insert the expansion plugs into the drilled holes using a hammer.



5. Place the fixing block covers over the holes and secure them firmly with expansion screws.