

Natalia Back-to-Corner Freestanding Bath

with

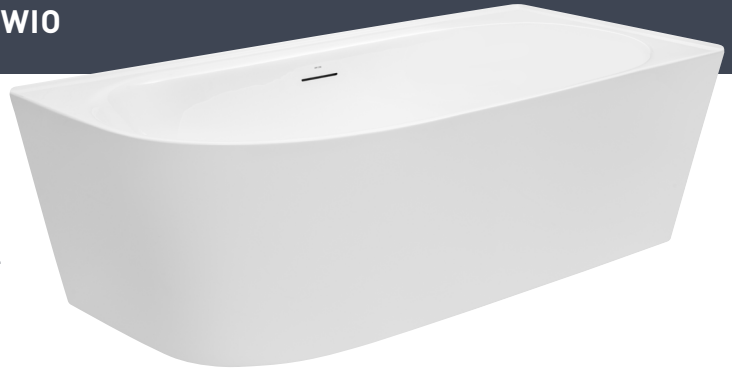
Integrated Overflow and two-sided tile bead [left or right corner]

Product Code: **NA1700LWIO / NA1700RWIO**



The Natalia's space saving, back-to-corner freestanding design, features two sides of tile bead that can be integrated into corner walls to give an easy to clean, water tight seal around the bath rim. The Natalia also features a sleek integrated overflow.

- Australian Standard 1172.5:2019
- Integrated Overflow
- Adjustable self-supporting feet
- Lumbar support
- Internal steel support frame
- Tile bead - 2 sides
- Left or right corner available



LEFT CORNER



RIGHT CORNER



PRODUCT SPECIFICATIONS

Colour:	High gloss white
Material:	Premium sanitary grade acrylic
Length:	1700mm
Width:	780mm
Height:	610mm
Capacity:	137L [200mm below the bath rim]
Bath Type:	Back-to-corner freestanding
Waste Position:	Centre
Net Weight:	40kg
Warranty:	10 years* (refer to decina.com.au)

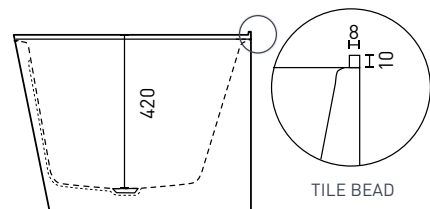
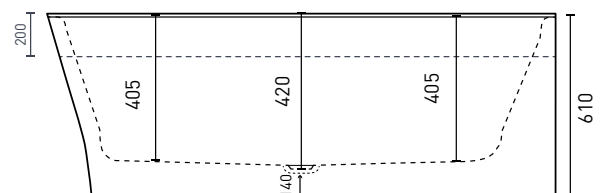
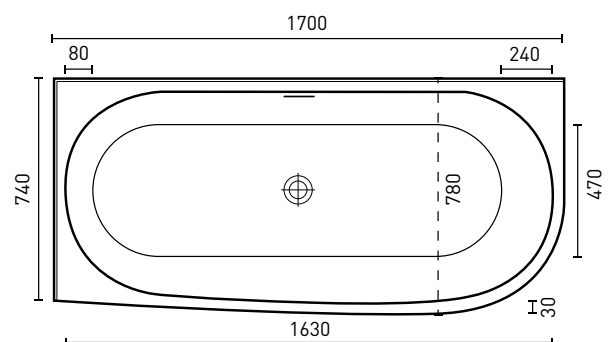
OPTIONAL ACCESSORIES

For straight through waste connections

- ☒ 40mm Removable Pop-Down Waste
W/O Chrome **OWA018**

For use when a waste connector is required

- ☒ Pop-down waste & flexi connector Chrome **OWA010**
- ☒ Screw pack for bath pop down **OWA015**
(necessary for baths with overflow wall thickness greater than 12mm)
- ☒ Sia headrest Black Curved **SY242-B**



DECINA
DISCOVER INDULGENCE

DECINA.COM.AU 1300 DECINA

*Warranty T&Cs apply, visit decina.com.au Decina reserves the right to change specifications without notice. Due to manufacturing tolerances dimensions may vary +/- 5mm. We recommend installation does not start until after delivery. Please confirm all particulars prior to purchase, call 1300 DECINA or visit decina.com.au