

Oxford Back-to-Wall Freestanding Bath

with Integrated Overflow

Product Code: **OX1700W10**



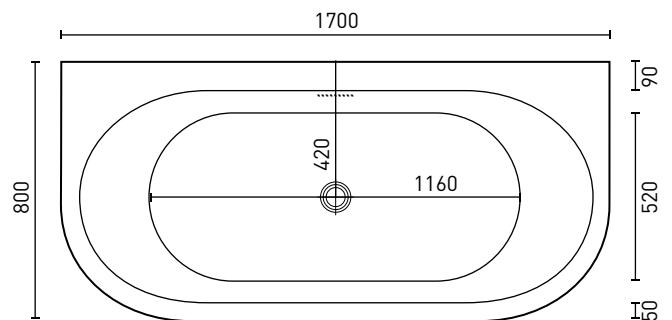
The exclusive Decina Oxford back-to-wall freestanding bath has a traditional or 'Hamptons' style look. The generous bath rim & tapered base creates a luxurious look, that will stand the test of time. Designed for comfortable bathing with gentle sloping curves & back rests. Featuring an integrated overflow and a full internal steel support frame with height adjustable legs, it is easy to install straight up-against a tiled bathroom wall, perfect for saving bathroom space.

- Australian Standard 1172.5:2019
- Integrated overflow
- Lumbar support
- Full steel support frame
- Suitable for dual bathing



PRODUCT SPECIFICATIONS

Colour:	High gloss white
Material:	Premium sanitary grade acrylic
Length:	1700mm
Width:	800mm
Height:	600mm
Capacity:	174L [200mm below the bath rim]
Bath Type:	Back-to-wall freestanding
Waste Position:	Centre
Net Weight:	50kg
Warranty:	10 years* (refer to decina.com.au)



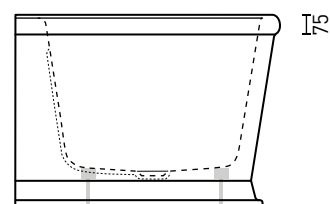
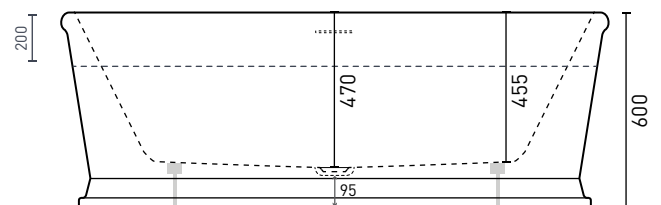
OPTIONAL ACCESSORIES

For straight through waste connections

- ☒ 40mm Removable Pop-Down Waste W/O Chrome **OWA018**

For use when a waste connector is required

- ☒ Pop-down waste & flexi connector Chrome **OWA010**
- ☒ Screw pack for bath pop down **OWA015**
(necessary for baths with overflow wall thickness greater than 12mm)



DECINA
DISCOVER INDULGENCE

DECINA.COM.AU 1300 DECINA

*Warranty T&Cs apply, visit decina.com.au Decina reserves the right to change specifications without notice. Due to manufacturing tolerances dimensions may vary +/- 5mm. We recommend installation does not start until after delivery. Please confirm all particulars prior to purchase, call 1300 DECINA or visit decina.com.au