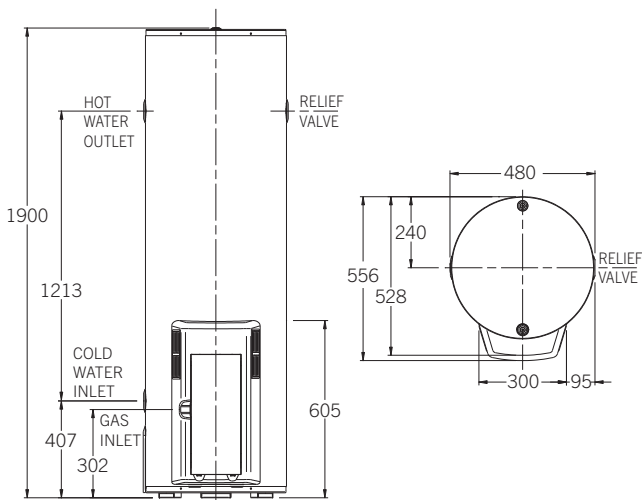




### Features & Benefits

- 5 Star energy efficiency
- Mains pressure at multiple taps
- Strong recovery – to have you back in hot water fast
- 305L first hour capacity of hot water
- Compact size – 480mm diameter
- Two anodes
- Natural gas model
- 10 year cylinder warranty<sup>1</sup>



MODEL	850295
Storage Capacity (L)	160
Hourly Recovery (L)	145
Gas Consumption (MJ/Hr)	30
Relief Valve Pressure (kPa)	1400
Expansion Control Valve (kPa)	1200
<b>Max Water Supply Pressure:</b>	
with ECV (kPa)	960
without ECV (kPa)	1120
Water Connections	Rp <sup>3</sup> / <sub>4</sub>
Gas Connection	Rp <sup>1</sup> / <sub>2</sub>
Approx. Weight (packaged) kg	90



Scan code for details & installation instructions

