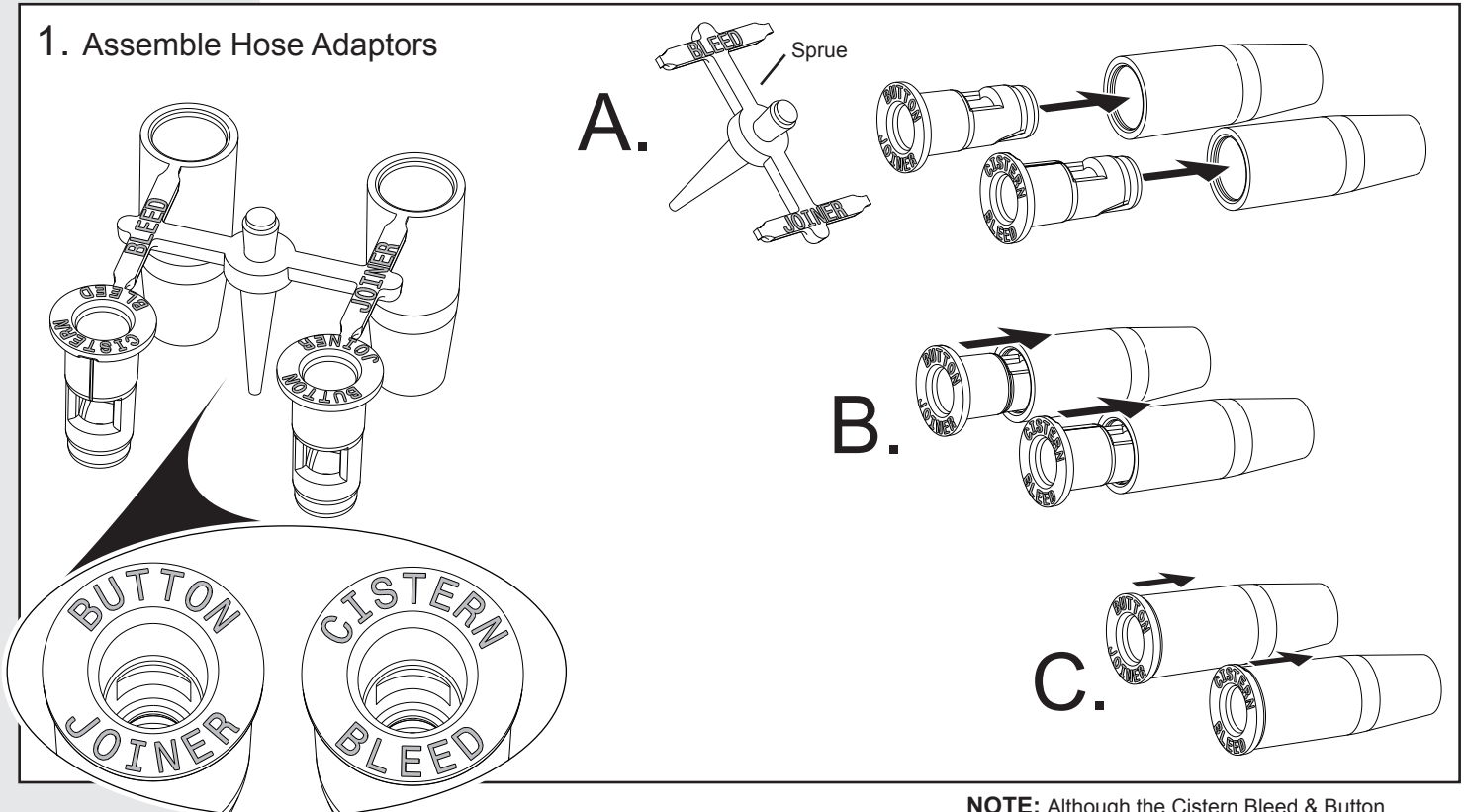


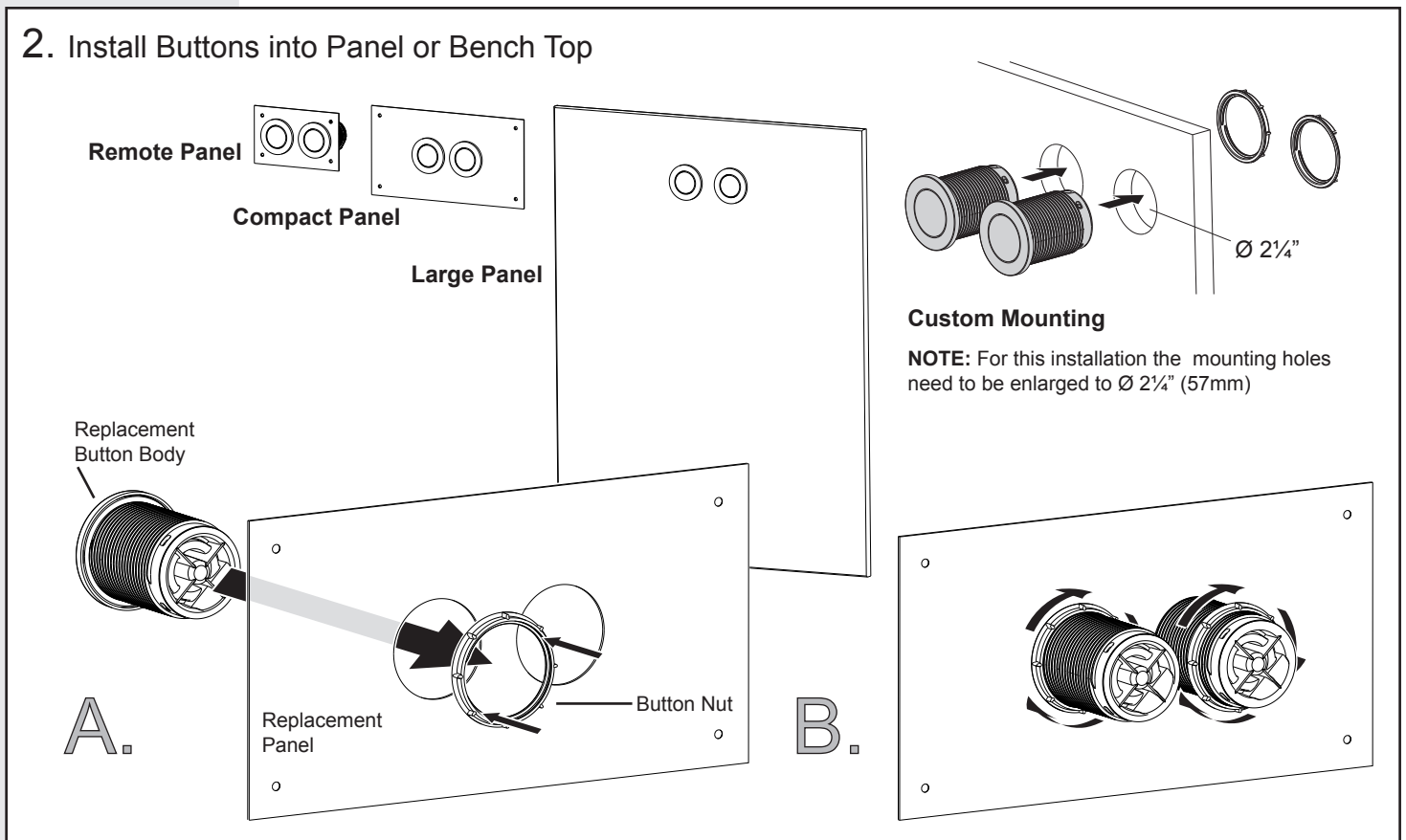
### 1. Assemble Hose Adaptors



- A. Detach Cistern Bleed & Button Joiner components from the sprue.
- B. Assemble components.
- C. Ensure components are firmly pushed together.

**NOTE:** Although the Cistern Bleed & Button Joiner appear to be very similar, they are not and have very specific applications. Please take care in installing the correct one in the correct location as instructed.

### 2. Install Buttons into Panel or Bench Top



- A. Insert threaded Button Body of your new button into your new Replacement Panel or Custom Mounting.
  - B. Firmly secure button with the nut provided.
- Repeat process for dual flush installations.

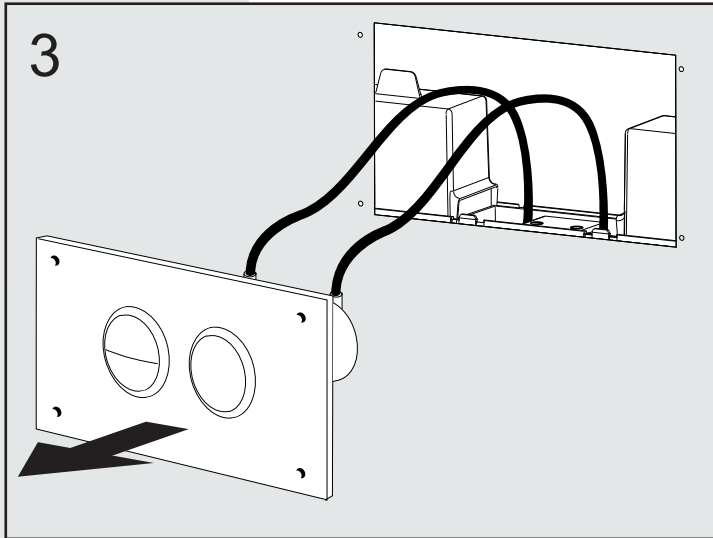
#### Custom Mounting

**NOTE:** For this installation the mounting holes need to be enlarged to Ø 2 1/4" (57mm)

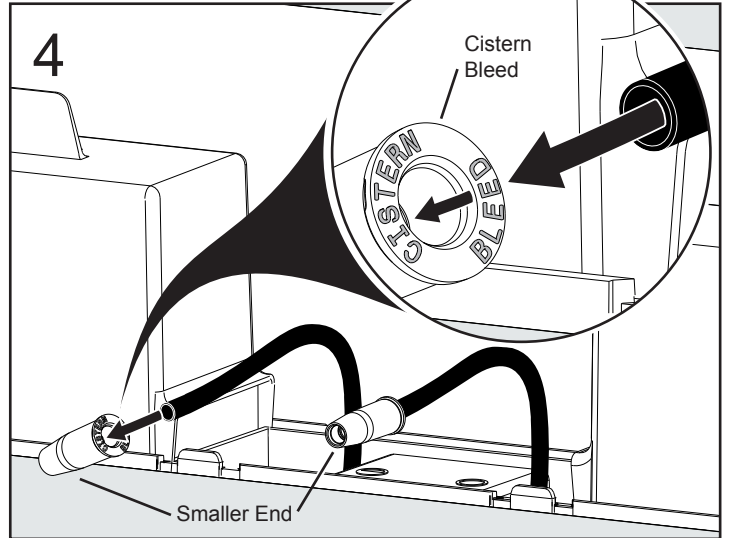
**NOTE:** This initial assembly process is the same for all replacement applications, including:

- Custom Button
- Remote Button Panel
- Compact Access Button Panel
- Large Access Button Panel

Button/Panel Replacement Pack

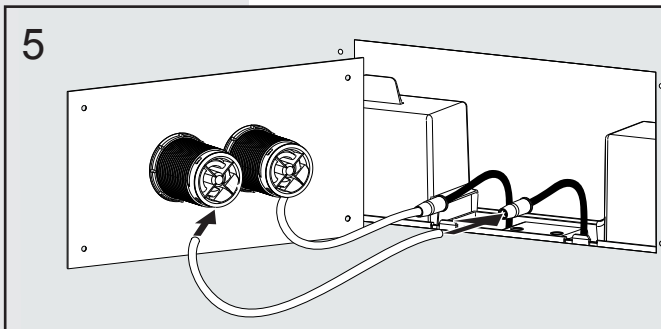


Remove and discard existing Panel & Button(s), leaving tube(s) connected to the cistern. Tubes installed in wall cavities should be left in position.

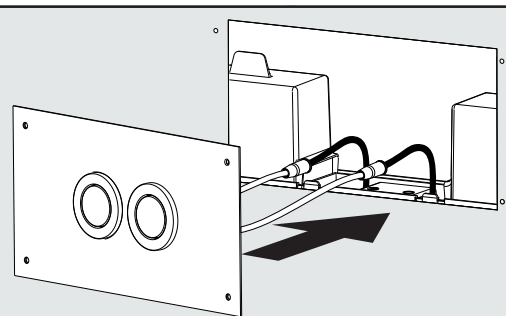


Neatly cut existing Ø8mm pneumatic tube(s) approximately 100mm from the cistern connection point. Firmly insert the trimmed tube end(s) into the larger, labelled end of the "Cistern Bleed" adaptor(s). These should be pushed in until the tube end reaches the internal stop.

Tube Length less that 0.6m



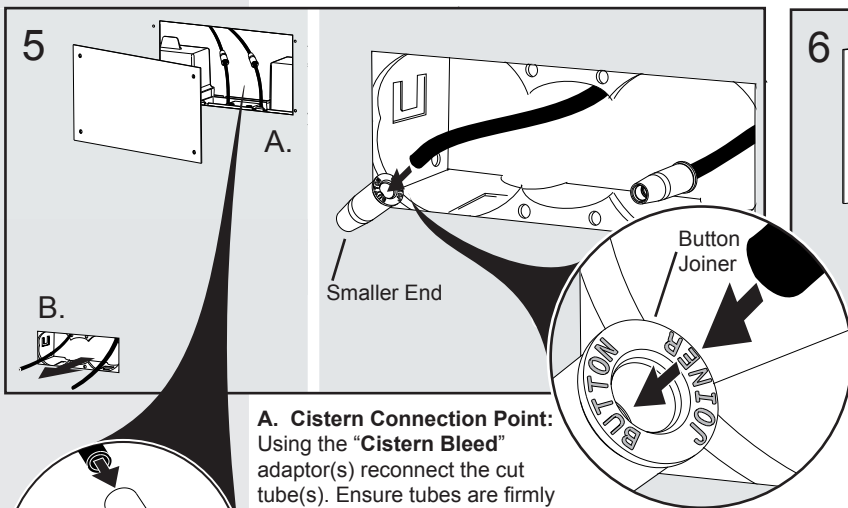
Using the Ø6mm pneumatic tube provided (cut to length as required), firmly make the connection(s) between both the rear of the button(s) and the smaller end of the "Cistern Bleed" adaptor(s).



Fit and secure new panel & button(s) in place using fixings provided.

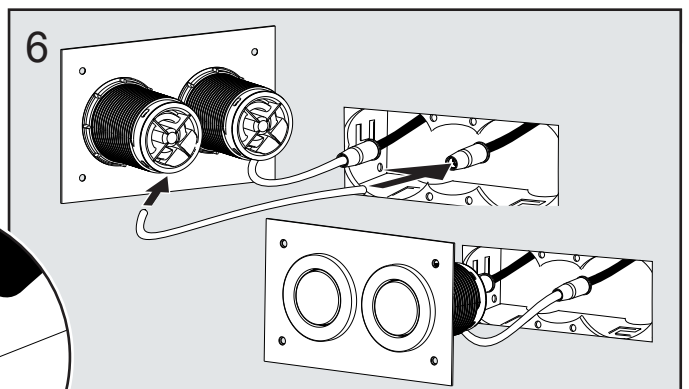
**NOTE:** The "Button Joiner" adaptor(s) are not required for this type of installation

Tube Length greater that 0.6m or where tube is built into wall



**A. Cistern Connection Point:** Using the "Cistern Bleed" adaptor(s) reconnect the cut tube(s). Ensure tubes are firmly pushed into the adaptor at both ends, until they reach the internal stops.

**B. Button Connection Point:** Firmly Insert the existing Ø8mm pneumatic tube end(s) into the larger, labelled end of the "Button Joiner" adaptor(s). These should be pressed in until the tube end reaches the internal stop.



Using the Ø6mm pneumatic tube provided (cut to length as required), firmly make the connection(s) between both the rear of the button(s) and the smaller end of the "Button Joiner" adaptor(s).

Fit and secure new panel & button(s) in place using fixings provided.