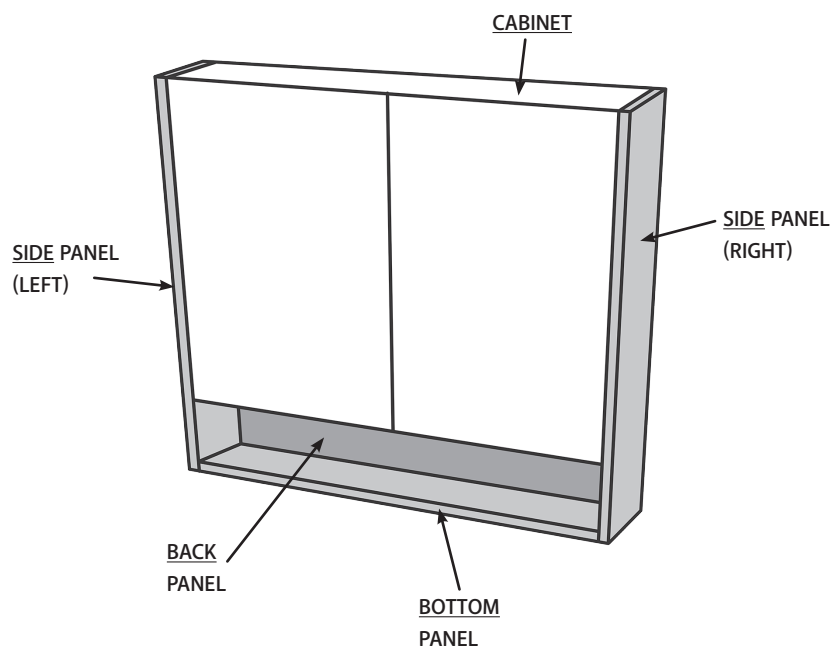


UNIVERSAL MIRROR CABINET

With Side Panels & Undershelf Set



BEFORE INSTALLATION

CHECK ALL PARTS OF PRODUCT THOROUGHLY. INSTALLATION IS ACCEPTANCE OF GOODS AND WILL VOID WARRANTY.

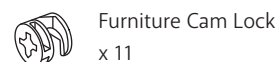
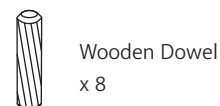
CABINET PACKAGE CONTENTS

Pre-assembled Cabinet with mirrored doors and 2 internal glass shelves.

SIDE PANELS & UNDERSHELF SET PACKAGE CONTENTS

2 x Side Panels
1 x Undershelf Bottom Panel
1 x Undershelf Back Panel

FITTINGS



1

Check all parts of product for damage. NOTE: INSTALLATION IS CONSIDERED ACCEPTANCE OF GOODS AND WILL VOID WARRANTY.

Check all parts on the package contents list are present.

Remove glass shelves from inside the cabinet and set aside in a safe area away from your work space.

- Slide glass shelves towards you, out of brackets.
- Remove brackets from bracket holes.



YOU WILL ALSO NEED

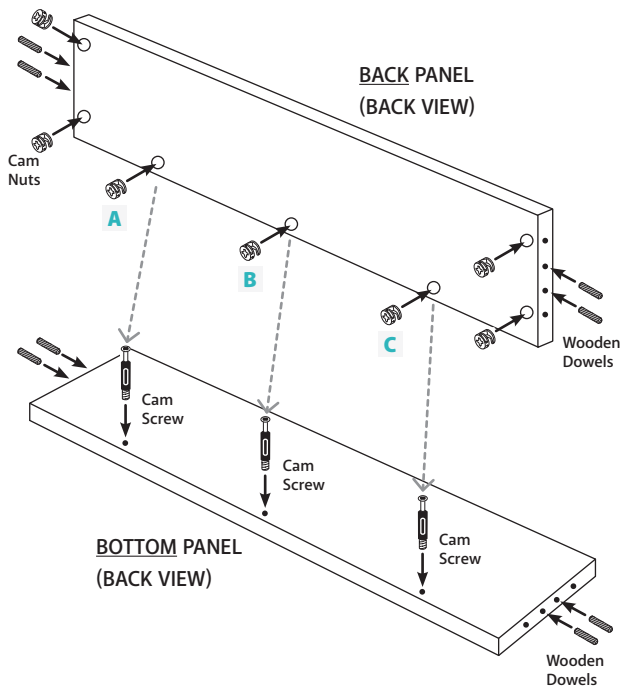


Phillips Cross Head Screw Driver

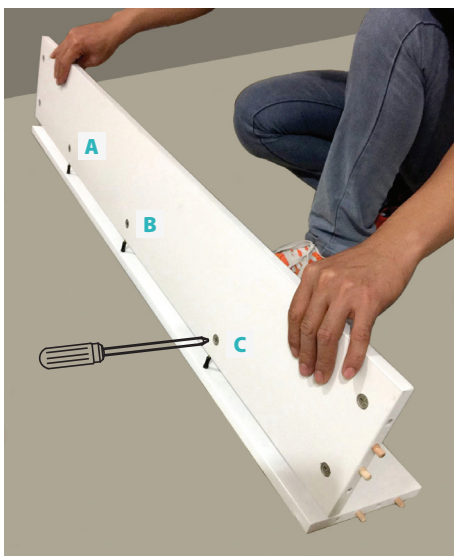
Assembling the Side Panels & Undershef

2

- Insert Cam Nuts and Wooden Dowels into Back Panel.
- Insert Cam Screws and Wooden Dowels into Bottom Panel.

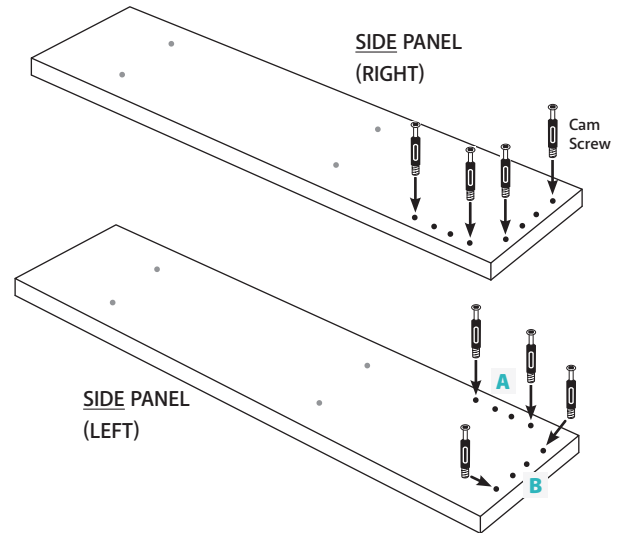


- Line up Back Panel Cam Nuts and Bottom Panel Cam Screws (A, B and C), push into position (see photo).
- Use screwdriver to turn Cam Nuts A, B and C, until they lock into place.

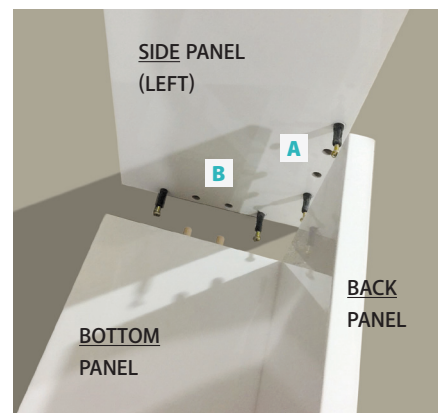


3

- Insert Cam Screws into Side Panels.



- Line up remaining holes (A and B) with Wooden Dowels in undershef, and push into position.



- On the Back and Bottom Panels, use a screwdriver to turn each Cam Nut until it locks into place. (If using an electric screwdriver be careful not to over-tighten as this may cause damage)



**DO NOT
OVER
TIGHTEN**

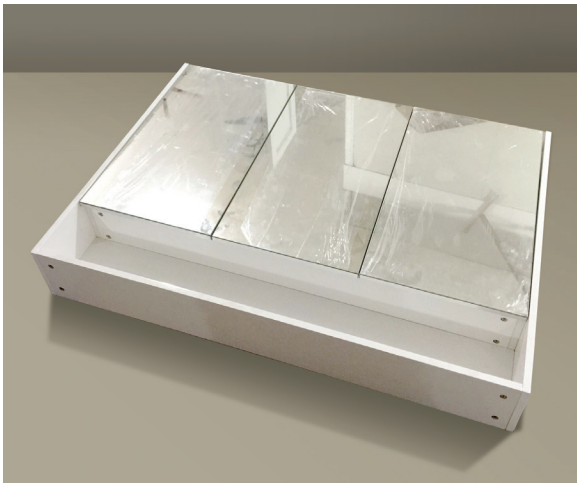
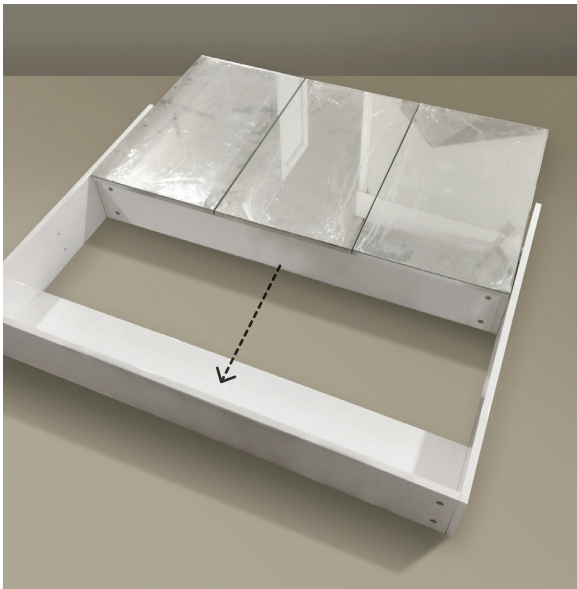
Attaching the Cabinet

4

- Now the Side Panels & Undershef are complete



- Lay the panels flat on the floor, and slide the Cabinet in between the sides.



5

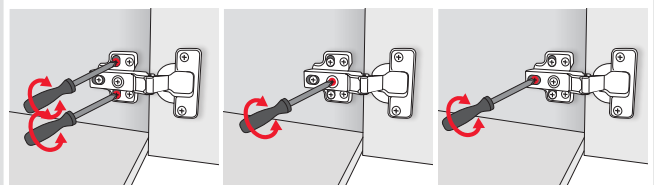
- Open the Cabinet doors - in each side there are 4 screw holes.



- Use a screwdriver to attach the cabinet to the side panels (If using an electric screwdriver be careful not to over-tighten as this may cause damage)



- Check cabinet is securely attached to panels.
- Attached Cabinet to wall before re-installing the glass shelves.



- Door hinges may need slight adjustment to realign doors after transit and handling.