

## Warranty Information

### Warranty Periods

#### Residential

Tapware and accessories is made to the highest industry standards and quality. Refer to table below for warranty periods

Mixers	
Range	Warranty
Mixers-Luciana	15 years labour on ceramic discs. 15 years ceramic disc cartridges. 15 years replacement parts or product.
Mixers-Keeto	
Mixers-Empire	5 years replacement on coloured finishes.
Mixers-Jet	

#### Subject to any overriding obligation, warranty shall be void for the following reasons:

- Inability to provide proof of purchase or equivalent documentation
- Products not installed by a licensed plumber
- Products not to relevant National Standards and State regulations
- Products not installed in accordance with the manufacturer's installation instructions.
- Products exposed to environmental elements.
- Tapware exposed to water pressures and or temperatures that exceed stated limitations. MAXIMUM: Temperature-75 degrees & Pressure - 500kPa  
MINIMUM: Temperature-1 degree & Pressure - 150kPa (300kPa for Shower/Bath Diverters) Note: AS/NSZ 3500.1-2003 (Clause 3.34) specifies 500kPa maximum water supply pressure at any outlet within a building for new installations.
- Showers may not be suitable for use within:
  - \* Gravity-fed water systems.
  - \* Some instantaneous hot water systems.
  - \* Pressure supply less than 150kPa.Note: The 500kPa maximum water supply pressure does not apply to fire service outlets.
- Isolation stop taps are not fitted as stated on manufacturer's installation instructions.
- Fitting of other devices to the outlet of tapware, eg. Water filters.
- Fitting of non-approved water flow regulating devices.
- Fitting of other devices to outlet of tap, e.g. Water filters.
- Non-installation of flow regulated check valve for hand showers.
- Products used for incorrect applications, non potable water etc.
- Damage as a result of obstructions due to inadequate flushing of system before use.
- Services repairs or with non-standard replacement parts previously undertaken without our written approval.
- Damage to finishes adhesives, Sealants etc.

#### Commercial

(Hotels, Aged Care Facilities, Hospitals, Schools, Factories, Motels etc.)

Category	Warranty Period	Warranty Details
All Products	1 Year	1 replacement product or parts

- Failure to clean & replace outlet aerator inserts etc.
- Damage to finishes which arise from installation or post installation use.
- Failure to observe manufacturers care and cleaning instructions.
- The Warranty Work is limited to the pre-approved scope of work. Additional work will require authorization After Sales & Services Departments.
- Evidence cannot be produced which confirms that the relevant product was purchased from our authorized distributor.

#### Mixers, Tapware And Accessories

##### Care and cleaning Instructions

- Under no circumstances should you install tapware using acetone silicones.
- Never use harsh detergents, citrus based cleaners or abrasive cleaners, as these will scratch the surface.
- Where your tapware remains dry in use, a soft cloth can be used to remove surface dust.
- Chrome plated surfaces should be cleaned with mild liquid detergent, or soap and water only.
- Use of wax-based furniture cream should be avoided as these can result in a build-up of deposits, which could detract from the appearance.
- Do not use undue pressure and wipe in one direction only.

##### Australian Consumer Law Guarantee

"Our goods come with guarantees that cannot be excluded in the Australian Consumer Law. You are entitled to a replacement or refund for a major failure and for compensation for any other reasonably foreseeable loss or damage. You are also entitled to have the goods repaired or replaced if the goods fail to be of acceptable quality and the failure does not amount to a major failure."

**Note: We reserve the right to alter, or amend this warranty offer in writing at any time. We reserve the right to provide minor components (eg. handles, aerators, buttons, dress rings, hinges, clips, rod and washers) as "Parts Only" to the customer.**

# fienza®

## INSTALLATION INSTRUCTIONS

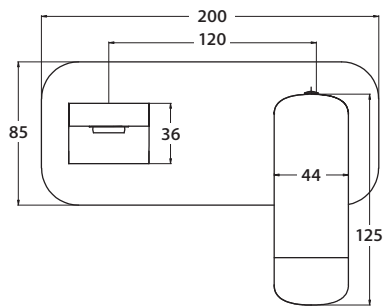
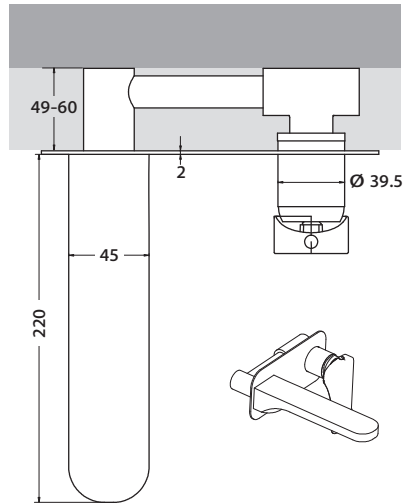


226106

# Luciana

## Wall Mixer Spout

## Specifications



<b>Product</b>	Wall Mixer Spout
<b>Document Revised</b>	June 2018
<b>Material</b>	Brass
<b>Available Finishes</b>	Chrome
<b>WELS Rating</b>	5 Star
<b>Flow Rate</b>	5.0 litres per minute
<b>Temperature Rating</b>	Min 1° - Max 75°
<b>Pressure Rating</b>	Min 150 KPa Max 500 KPa

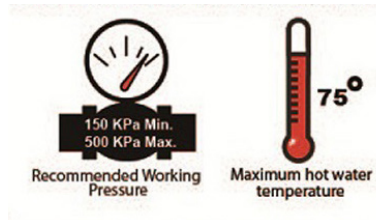
## Installation

### BEFORE INSTALLATION:

**CHECK PRODUCT THOROUGHLY AND REPORT ANY MISSING COMPONENTS OR DAMAGE. INSTALLATION OF FAULTY OR DAMAGED GOODS WILL VOID WARRANTY.**

### Water supply requirements

- If the pressure exceeds or is likely to exceed 550kpa, an approved pressure limiting device must be installed
- Flush out all pipe work prior to installation
- If the water temperature exceeds 75°C, an approved tempering valve must be fitted.
- Installation should comply with Australian standard AS3500.1 or relevant local authority requirements.
- Failure to comply with the above may avoid all warranties



### INSTALLATION NOTES:

- The faucet has been professionally tested and adjusted prior to sale, please do not separate and install by yourself.
- In order to avoid sundry jam the faucet and affect the normal water flow please be sure to remove the sundries of the pipeline before installation.
- The hole of the sink should be between 32-35mm, the thickness of the sink should be between 30-32mm.
- Please check the sealing condition of each connection and ensure without leaking after installation.
- Range of the working pressure is 0.5bar-10bar. Range of water temperature is 4°C-90°C.
- The faucet must be connected correctly with the hot and cold flexible connections.
- Installation shall be in accordance with the AS/NZS3500 series of standards.
- We are proud to offer you a 15 year warranty, but our warranty does not cover a faucet that has been installed incorrectly or subjected to abnormal use.

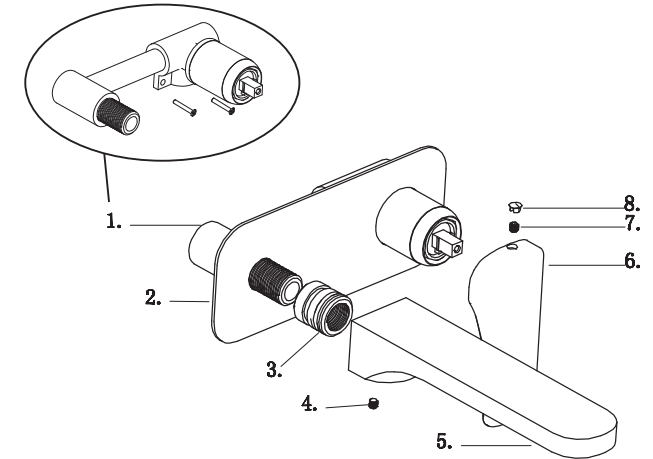
## Installation

### REQUIRED TOOLS:

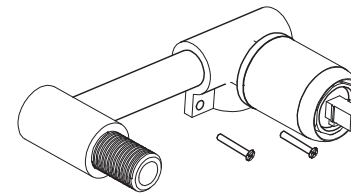
Screwdriver  
Adjustable wrench  
Adjustable pliers

### PARTS:

- |   |           |
|---|-----------|
| 1 | Body      |
| 2 | Plate     |
| 3 | Connector |
| 4 | Screw     |
| 5 | Spout     |
| 6 | Handle    |
| 7 | Screw     |
| 8 | Cap       |



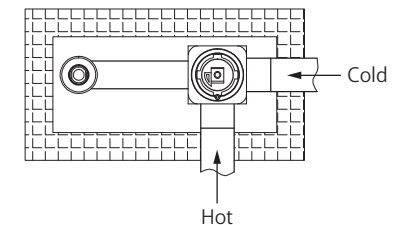
**1. Remove handle (6), spout (5), connector (3), and plate (2).**



**2. Put the body (1) into the hidden hole.**

**3. Connect the pipeline.**

**4. Check for leaks by running water for one minute.**



**5. Replace the plate (2), connector (3), spout (5), and handle (6).**

