

laundry collection

Instructions for use and warranty details

To register your warranty or make a warranty claim, scan this QR code:



Top Load Washing Machine

Model No.: LWT1210

 **kLEENmaid**

Dear Customer,

Thank you and congratulations for choosing Kleenmaid.

Your new appliance has been designed and meticulously tested to ensure that it meets all your culinary requirements, and has been carefully manufactured using top quality materials to give you years of reliable performance.

For best results, carefully read the instructions on how your new appliance is to be installed. Correct installation will avoid delays and unnecessary service call costs.

Once installation is complete, please read this instruction manual carefully and get to know the controls and the features of your new Kleenmaid appliance. These simple instructions will enable you to achieve excellent results from the very first time you use it.

Again, congratulations and thank you for choosing The Best You Can Own.

KLEENMAID

CONTENTS

SAFETY INSTRUCTIONS

- Safety instructions 4

INSTALLATION

- Product description 9
- Packing the washing machine 10
- Unpacking the washing machine 10
- Installation area 10
- Installation of drain hose 11
- Positioning of drain hose 11
- Levelling the washing machine..... 11
- Connection of inlet hose, tap and washing machine..... 12

OPERATION

- Preparation before washing..... 13
- Washing 13
- After washing..... 13
- Preparing the machine and clothes 14
- The usage of detergent and washing powder..... 14
- Control panel 15
- Options..... 16
- Personalized setting of washing program..... 17
- Operation of washing processes..... 17
- Washing program table 18

MAINTENANCE

- Cleaning and care 19
- Cleaning the cabinet..... 19
- Cleaning the filters..... 19
- Trouble shooting..... 20
- Technical Specifications 21
- Energy efficiency test program..... 21

SAFETY INSTRUCTIONS

■ Safety instructions

For your safety, the information in this manual must be followed to minimize the risk of fire or explosion, electric shock, or to prevent property damage, personal injury or loss of life.

- This appliance is not intended for use by persons (including children) with reduced physical, sensory or mental capabilities or lack of experience and knowledge unless they have been given supervision or instruction concerning use of the appliance by a person responsible for their safety.
- Children should be supervised to ensure that they do not play with the appliance.
- If the supply cord is damaged, it must be replaced by the manufacturer, its service agent or similarly qualified persons in order to avoid a hazard.
- The new hose-sets supplied with the appliance are to be used and old hose-sets should not be reused.
- The openings must not be obstructed by a carpet.
- This appliance is intended to be used in household and similar applications such as:
 - staff kitchen areas in shops, offices and other working environments;
 - farm houses;
 - by clients in hotels, motels and other residential type environments;
 - bed and breakfast type environments;
 - areas for communal use in blocks of flats or in launderettes.

Explanation of the symbols:



Warning!

This combination of symbol and signal word indicates a potentially dangerous situation which may result in death or serious injuries unless it's avoided.

SAFETY INSTRUCTIONS



Caution!

This combination of symbol and signal word indicates a potentially dangerous situation which may result in slight or minor injuries or damage to property and the environment.



Note!

This combination of symbol and signal word indicates a potentially dangerous situation which may result in slight or minor injuries.



Warning!

Electrical Safety Precautions

- This appliance is for indoor use only.
- Do not install the washing machine in a humid place.
- Hands should not be inserted into the tub whilst it is spinning.
- If the tub does not stop spinning within 15 seconds of opening the lid during a spin cycle please stop using the machine and have it repaired.
- Before any maintenance is performed upon this washing machine, unplug the appliance from the mains electricity supply.
- Always unplug the machine and turn off the water supply after use. See the max/min. inlet water pressure in the Technical Specifications table on page 21.
- To ensure your safety, the power plug must be inserted into an earthed three-pole socket. Check carefully and make sure that your socket is properly and reliably earthed.
- The water and electrical devices must be connected by a qualified technician in accordance with the manufacturer's instructions and local safety regulations.

SAFETY INSTRUCTIONS

Child Safety Precautions

- This appliance is not intended for use by persons (including children) with reduced physical, sensory or mental capabilities or lack of experience and knowledge unless they have been given supervision or instruction concerning use of the appliance by a person responsible for their safety.
- Children shall not play with the appliance. Cleaning and user maintenance shall not be made by children without supervision.
- Check the machine before every operation to ensure animals or children have not climbed inside the tub.
- Young children should be supervised to ensure that they do not play with the appliance.
- The machine may become very hot during operation. Keep children and pets far away from the machine whilst in operation.
- Avoid using this appliance in very wet rooms as well as in rooms with explosive or caustic gas.
- Remove all packaging before using the appliance, otherwise, serious damage may result.
- The washing machine has double inlet valves and should be correctly connected to the hot water and cold water supply.
- Plug must be accessible after installation.

Avoiding risk of explosion

- Do not wash or dry articles that have been cleaned in, washed in, soaked in, or dabbed with combustible or explosive substances(such as wax, oil, paint, gasoline, degreasers, dry-cleaning solvents, kerosene, etc.) This may result in fire or explosion.
- Thoroughly rinse such items of washing by hand.

SAFETY INSTRUCTIONS



Caution

Installation Safety Precautions

- This washing machine is for indoor use only.
- It isn't intended to be built-in.
- The openings must not be obstructed by a carpet.
- Washing machine shall not be installed in bathrooms or very wet rooms or in rooms with explosive or caustic gases.
- Remove all packaging and transport bolts before using the appliance, otherwise, serious damage may result.
- The washing machine has double inlet valves and should be correctly connected to the hot and cold water supply.
- Plug must be accessible after installation.



WARNING: IT MUST BE ENSURED THAT THIS APPLIANCE IS CONNECTED ONLY TO A 230vac +10%/-6% 50Hz MAINS POWER SUPPLY WHICH CONTINUOUSLY COMPLIES WITH THE RELEVANT AUSTRALIAN STANDARD. FAILURE TO DO SO MAY SERIOUSLY DAMAGE THE APPLIANCE AND ANY SUCH DAMAGE IS NOT COVERED BY THE MANUFACTURER'S WARRANTY.



To avoid damaging the appliance

- Your product is only for home use and is only designed for textiles suitable for machine washing.
- Do not climb up and sit on the top cover of the machine.
- Do not lean against machine lid.
- Cautions during Handling Machine:
 1. Transport bolts shall be reinstalled to the machine by a qualified person.
 2. The accumulated water shall be drained out of the machine.
 3. Handle the machine carefully. Never hold any protruding part on the machine while lifting. The machine lid can not be used as the handle during conveyance.
 4. This appliance is heavy. Transport with care.

SAFETY INSTRUCTIONS

- Please do not close the lid with excessive force.
- This machine is not intended for washing carpets.

Operating the appliance

- Before washing a load of clothes for the first time the product shall be operated whilst empty for one whole cycle.
- Flammable and explosive or toxic solvents are forbidden. Gasoline and alcohol etc. shall not be used as detergents. Please only select detergents suitable for top loading washing machines.
- Make sure that all pockets are emptied. Sharp and rigid items such as coins, brooches, nails, screws or stones etc. may cause serious damage to this machine.
- Please check whether the water inside the tub has been drained before opening its lid.
- Be careful of burns to the skin when the product drains hot washing water.
- Never refill the water by hand during washing.

Disposal of Packaging/Old Appliance



To dispose of packaging and the appliance please go to a recycling centre.

For safety, cut off the appliance power supply cable and disable the lid closing device.

Cardboard packaging is manufactured from recycled paper and should be disposed of in the waste paper collection for recycling.

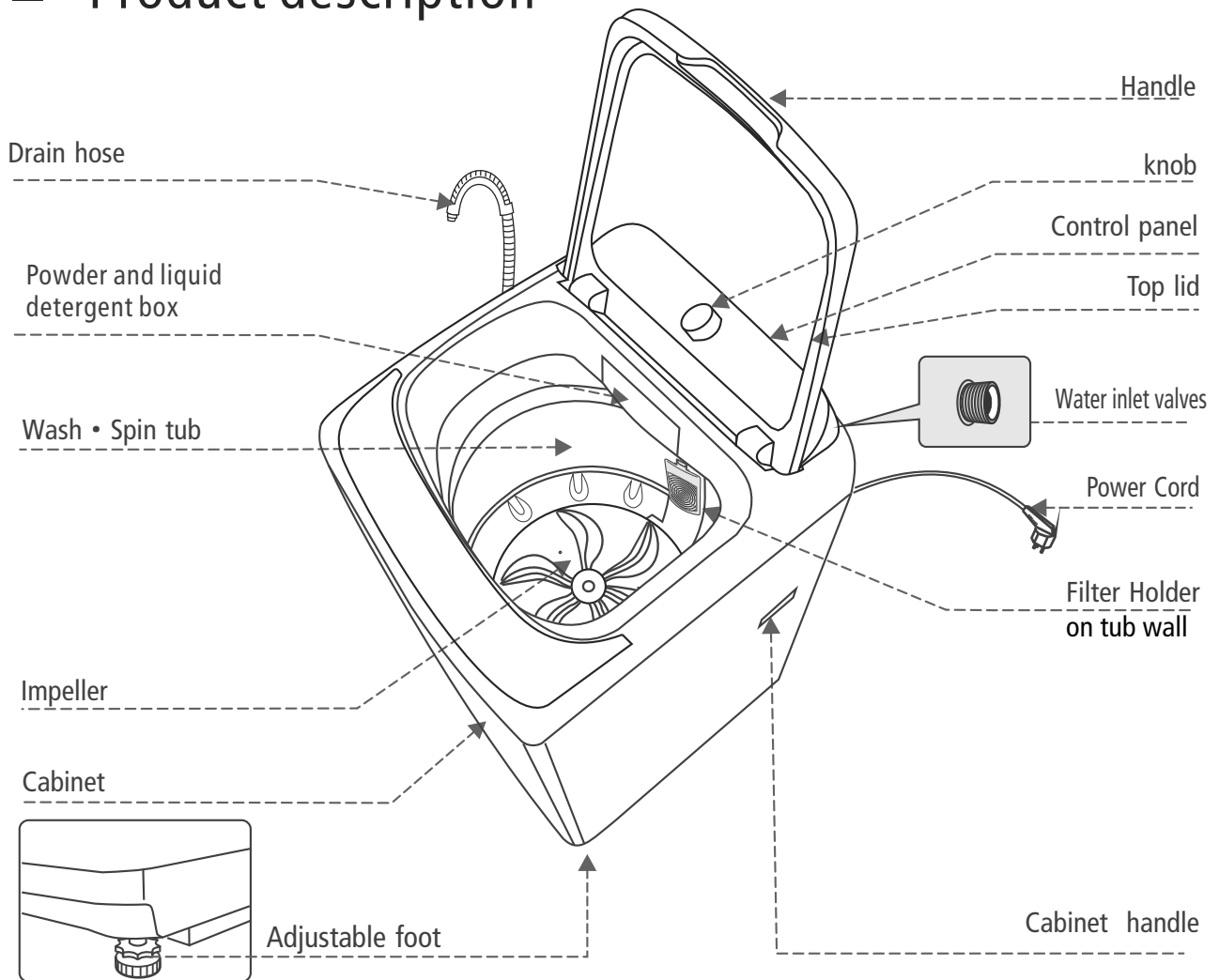
By ensuring this product is disposed of correctly, you will help prevent potential negative consequences for the environment and human health, which could otherwise be caused by inappropriate waste handling of this product.

For more detailed information about recycling of this product, please contact your local council office and your household waste disposal service.

DISPOSAL: Do not dispose this product as unsorted municipal waste. Collection of such waste separately for special treatment is necessary.

INSTALLATION

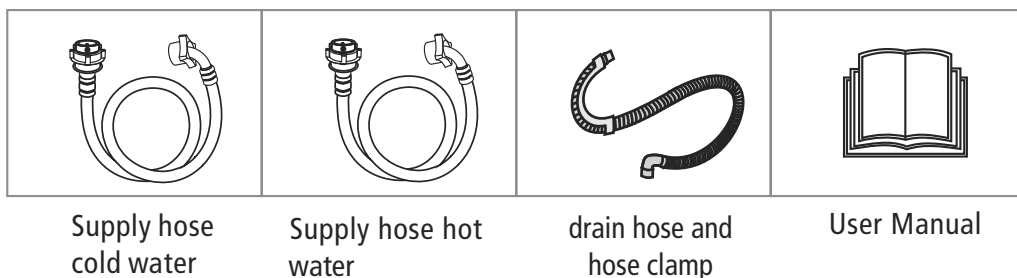
■ Product description



📌 Note!

The product description diagram is for reference only, please refer to your appliance to note the name and position of each part.

Accessories

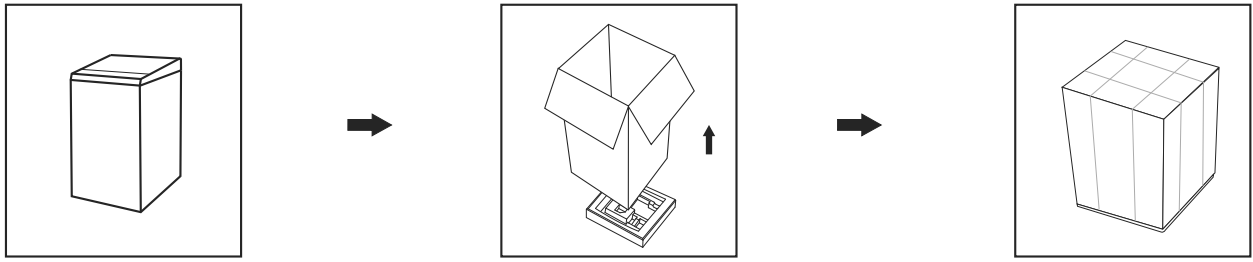


📌 Note!

Before making preparations for or commencing installation, the installer should refer to the current online version of the User Manual, which is available on the Kleenmaid website (see back cover for details).

INSTALLATION

■ Packing the washing machine

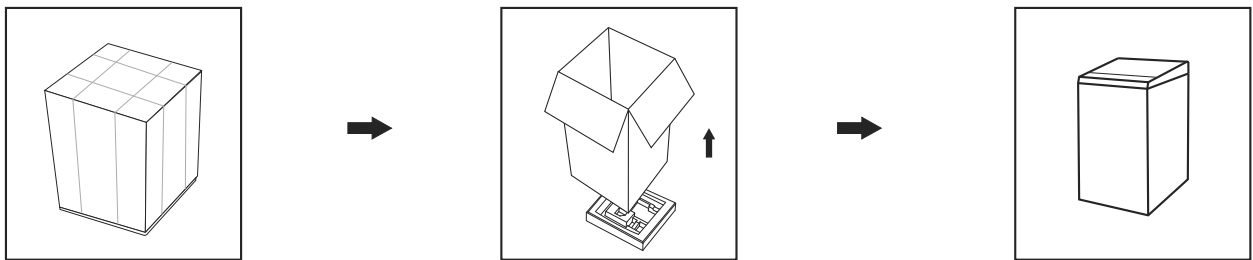


■ Unpacking the washing machine

⚠ Warning!

- Packaging material (e.g. Film, Styrofoam) can be dangerous for children.
- There is a risk of suffocation. Keep all packaging well away from children.

1. Remove the cardboard box and styrofoam packing.
2. Lift the washing machine and remove the base packing.
3. Remove the tape securing the power supply cord and drain hose.
4. Remove the inlet hose from the drum.



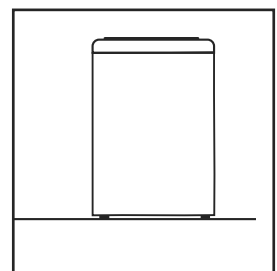
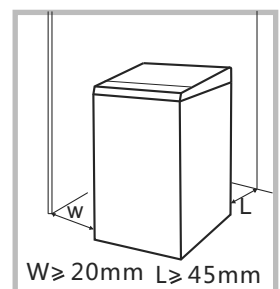
■ Installation area

⚠ Warning!

- Stability is important to prevent the product from moving around.
- Make sure that the power cord does not get trapped under the appliance.

Before installing the machine, check the selected location has:

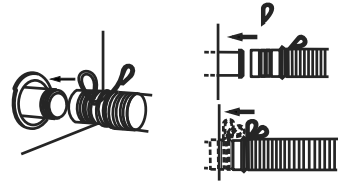
1. Rigid, dry, and level surface
2. Avoid direct sunlight
3. Sufficient ventilation
4. Room temperature is above 0 C
5. Keep far away from heat sources such as coal or gas.



INSTALLATION

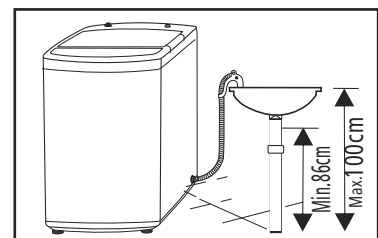
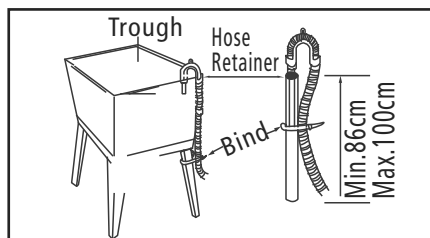
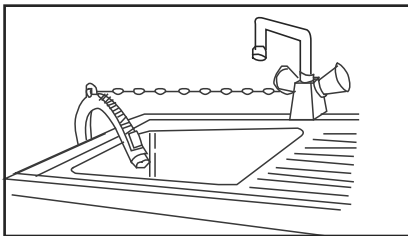
■ Installation of drain hose

1. Connect the end of the supplied drain hose to the drain outlet on the lower back of the washing machine.
2. Fix and tighten it firmly with the supplied hose clamp. See figure on right.



■ Positioning of drain hose

See the diagrams below for minimum and maximum heights for positioning the drain hose. Ensure the drain hose is not kinked, crushed or stretched.



⚠ Warning!

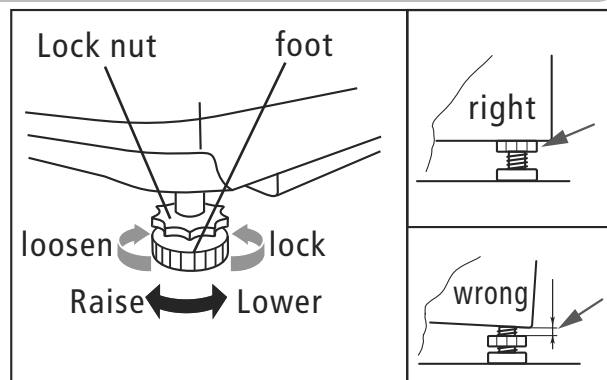
Do not kink, crush or stretch the drain hose.
Position the drain hose properly, or damage may result from water leakage.
During the initial empty cycle (see p14) check for water leakage from the drain outlet/drain hose and tighten the hose clamp if necessary.

■ Levelling the washing machine

⚠ Warning!

- The lock nuts on all the feet must be screwed firmly against the housing.

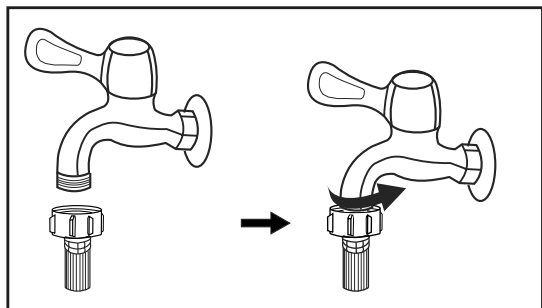
1. Check if the feet are closely attached to the cabinet. If not, turn them to their original position by tightening the nuts.
2. Check alignment of the product with a spirit level and adjust if required.
3. Loosen the lock nut and turn each foot until it closely contacts with the floor.
4. After locking the feet properly press on all four corners to ensure the feet have been adjusted correctly.



INSTALLATION

■ Connection of inlet hose, tap and washing machine

Connection between screw tap and inlet hose.



Screw inlet hose onto a tap with threads and tighten firmly. Check for water leakage after connection.

Warning!

To prevent leakage or water damage, follow the instructions in this section. Do not kink, crush, modify or cut the water inlet hose.



WARNING: IT MUST BE ENSURED THAT THIS APPLIANCE IS CONNECTED ONLY TO A 230vac +10%/-6% 50Hz MAINS POWER SUPPLY WHICH CONTINUOUSLY COMPLIES WITH THE RELEVANT AUSTRALIAN STANDARD. FAILURE TO DO SO MAY SERIOUSLY DAMAGE THE APPLIANCE AND ANY SUCH DAMAGE IS NOT COVERED BY THE MANUFACTURER'S WARRANTY.



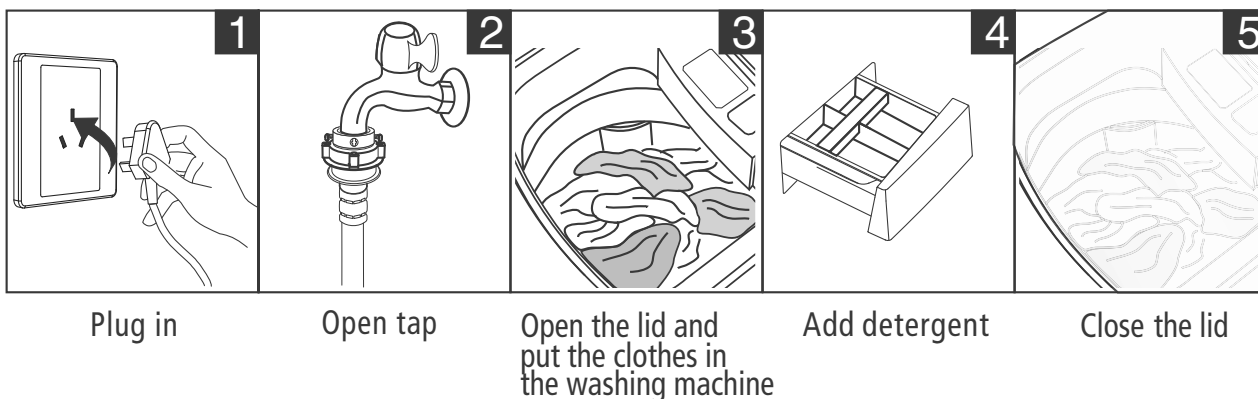
OPERATION

■ Preparation before washing

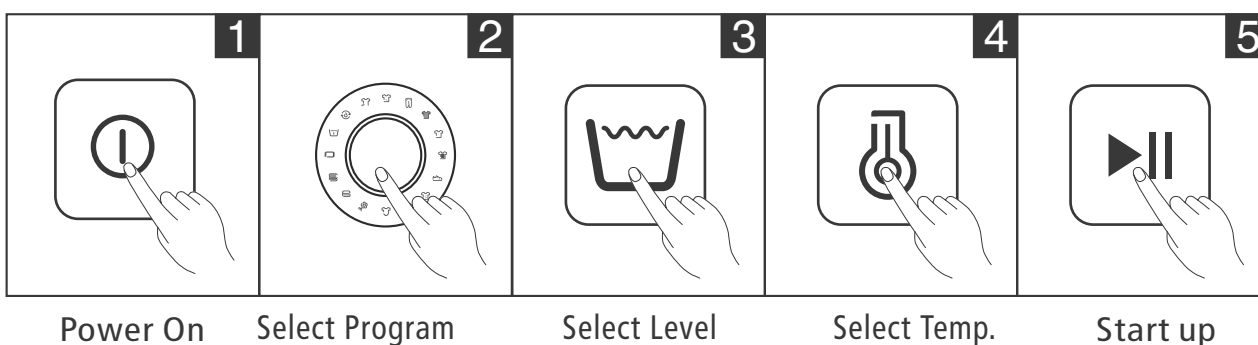
⚠ Caution!

Before washing, please make sure the machine is installed correctly.

Before washing a load of clothes for the first time, operate the empty washing machine for one whole cycle. Check for water leakage from the drain outlet/drain hose and tighten the hose clamp if necessary.



■ Washing



📌 Note!

- If default is selected, step 2, 3, and 4 can be skipped.

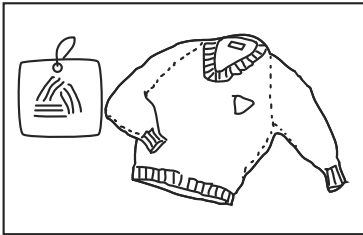
■ After washing

Buzzer will beep after the washing cycle is finished and the power supply will cut off automatically. The laundry may then be unloaded.

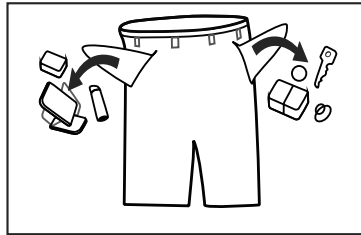
OPERATION

■ Preparing the machine and clothes

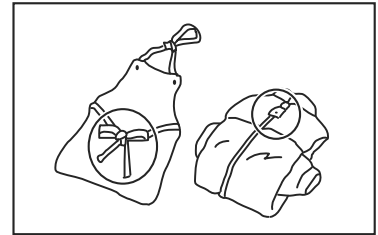
- The working condition of the washer should be (0-40)°C. If used under 0°C the inlet valve and draining system may be damaged. If the machine is placed under conditions of 0°C or less, then it should be transferred to normal ambient temperature to ensure the water supply hose and drain hose are not frozen before use.
- Please check the clothing care labels and the directions for detergent use before washing. Use non-foaming or low-foaming detergent suitable for top load washing machines.



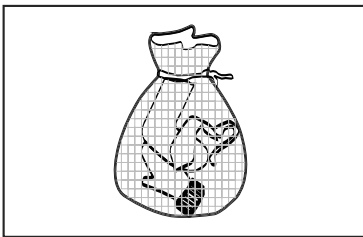
Check the label



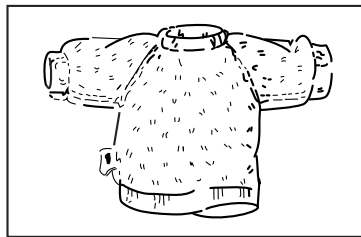
Take all items out of the pockets



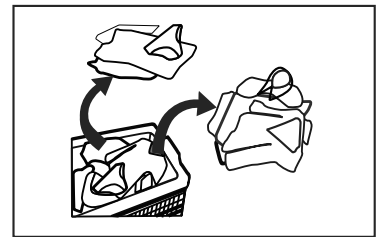
Tie cords and close zips and buttons



Put small clothes into a protective washing bag



Turn fabric which pills or has long pile inside out



Separate clothes with different textures

⚠ Warning!

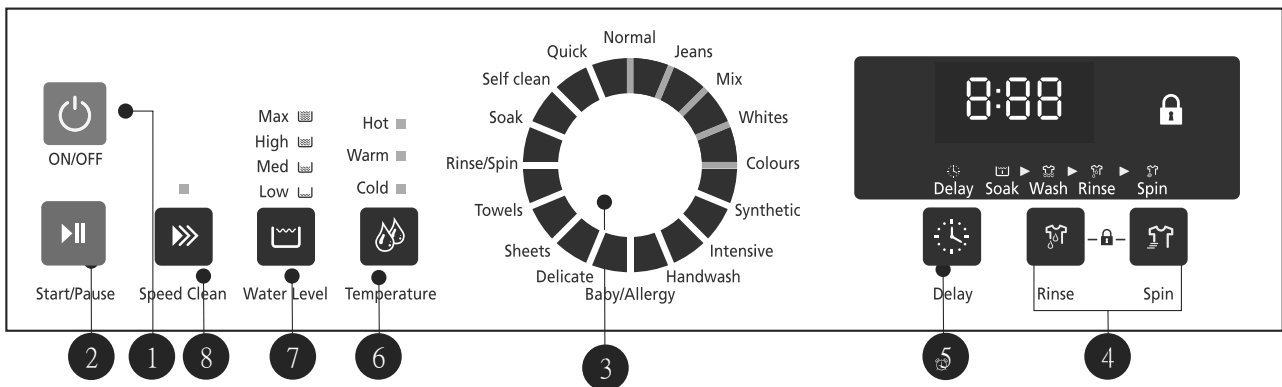
- Washing only a single item may cause the machine to become unbalanced during the cycle. It is recommended that a few other items be included in the load so the machine functions smoothly.
- Don't use the machine to wash clothes spotted or saturated with kerosene, petrol, alcohol or other flammable materials.

■ Using Detergent and Washing Powder

- Dilute washing powder or powdered additives with a little water before adding to the detergent dispenser to prevent the inlet of the dispenser becoming blocked and overflowing while the machine is filling with water.
- Please choose a detergent suitable for top load machines, and for the selected washing temperature, to optimize washing performance with less water and energy consumption.

OPERATION

■ Control Panel



Note!

This diagram is for reference only, please refer to your appliance control panel.

1 On/Off

Product is switched on or off.

2 Start/Pause

Press the button to start or pause the washing cycle.

3 Program

Rotate to select program.

4 Rinse&Spin

Press the Rinse button & the Spin button respectively to select and store a rinse or spin time.

5 Delay

Press the button to preset delay time.

6 Temperature

Press the button to manually select the wash temperature.

7 Water Level

After program selection, press the water level button to manually select the water level for the wash.

8 Speed Clean

After choosing a program, the user can press the Speed Clean button to start this function, making the program shorter with good washing performance. Press the Speed Clean button again to cancel the function.

OPERATION

■ Options

Child Lock

If you want to lock all the buttons to prevent settings from being changed by children you can activate the Child Lock function. NB. Power button is still active when child lock is on.

How to Lock

1. Press the Power button to turn power on.
2. Press the Start/Pause button to start washing.
3. Press and hold the Rinse and the Spin buttons simultaneously until there is a beep and the child lock icon on the display lights up. NB. Power button is still active when child lock is on.



How to Unlock

If you want to turn off the child lock during the wash cycle press the Rinse and Spin buttons simultaneously again until the machine beeps and the childlock display light goes off.

Caution!

When the lid is opened during machine operation, the buzzer will beep continuously. If the lid is left open more than 1 hour, the machine will shut down automatically. To resume the wash cycle if error code E3 appears close the lid and press Start.

Speed Clean System

1. Press the Power button to turn power on.
2. Turn the Program Knob to select "Normal", "Jeans", "Mix", "Whites" or "Colours" program.
3. Press the Speed Clean button.
4. Press the Start/Pause button, the Speed Clean function starts up.

Caution!

If there is any break in the power supply while the machine is operating, a special memory stores the selected program for when the power is restarted.

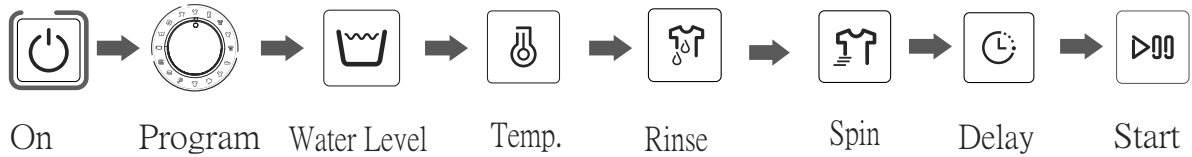
Caution!

The Speed Clean function is available for use only with the 5 programs: Normal, Jeans, Mix, Whites, and Colours.

OPERATION

■ Personalized setting of washing program

Users can select and customise washing programs, by setting rinsing time, spinning time, water volume and delayed starting time.



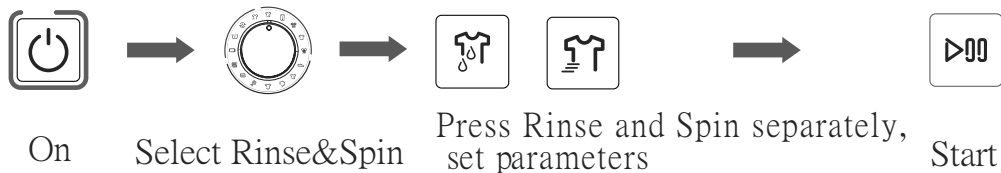
■ Operation of washing processes

Users can set a single process or combinations of rinsing and spinning freely according to demand. Detailed operations as follows:

Spin Only Function



Rinse+Spin



Note!

- Use this method to select other process combinations.

OPERATION

■ Washing programs table



Programs are available according to the laundry type.

Programs

Program

Normal Standard fabric washing program suitable to wash cotton fabric with one wash cycle, two rinse cycles, and a long spin time.

Jeans Suitable to wash Jeans.

Mix Suitable to wash mixed load consisting of textiles made of cotton and synthetic.

Whites Suitable to wash white clothes.

Colours Suitable to wash coloured clothes. It is set to protect the colours.

Synthetic Use to wash synthetic articles eg shirts, coats, fabric blends

Intensive Use this program when washing heavy duty clothes eg. work clothes and blankets.

Handwash A gentle wash program to protect hand-washable textiles.

Baby/Allergy Suitable to wash children's clothes.

Delicate Use this program for washing woollens, delicate items or clothes that only require a light wash.

Sheets Suitable for washing sheets and bed linen.

Towels Suitable for washing towels.

Rinse/Spin Extra rinse and spin.

Soak When the Soak program is selected the machine fills as for the normal washing program, however agitation is delayed for about 30 minutes before the washing process begins. This is useful for washing particularly soiled clothes.

Self clean Washing power residue and pollutants in the water gradually build up inside and outside the tub of washing machines. Water drainage and the cleanliness of clothes can be adversely affected. To ensure this appliance works efficiently please use the Self clean feature to clean the tub at least monthly.

Quick Use for lightly soiled clothes. This program has only one rinse cycle.

MAINTENANCE

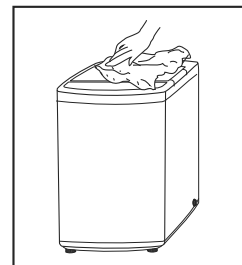
■ Cleaning and care

⚠ Warning!

- Before commencing maintenance, please unplug the machine and turn off the tap.

■ Cleaning the cabinet

Proper maintenance of the washing machine can extend its working life. The surface can be cleaned with diluted non-abrasive neutral detergents when necessary. If there is any water overflow, use a cloth to wipe it off immediately. Sharp items should not be used when cleaning the machine.



📌 Note!

- Formic acid and its diluted solvents or equivalents such as alcohol, solvents or chemical products, etc. should not be used to clean this appliance.

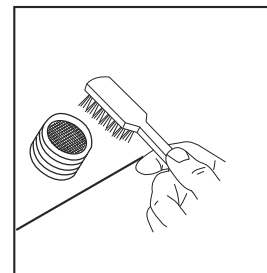
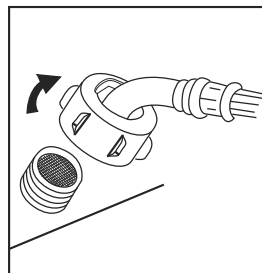
■ Cleaning the filters

📌 Note!

- Inlet filter must be cleaned if the water flow decreases.

Cleaning the inlet filter:

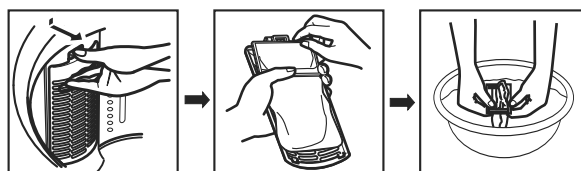
1. Screw off the inlet pipe from the back of the machine.
2. Pull out the filter with long nose pliers and use a brush to clean the filter.
3. Reinstall the filter after cleaning.
4. Reconnect the inlet pipe.



Cleaning the lint filter

1. There is a built-in lint filter on the inner wall of the tub. It helps to collect lint during the washing cycle.
2. It is recommended that the lint filter is cleaned after every 10 cycles.
3. Press the latch to release the cover and remove the filter. Clean the filter with water then replace it into the washer.

cleaning the lint filter



MAINTENANCE

■ Trouble shooting

If this appliance does not work or it stops during operation use the information here to try to find a solution. If the issue is cannot be resolved, contact a service centre.

Description	Inspection to check:
Washer doesn't start	<p>If the power is off or the fuse is burned out. If the power supply voltage is too low. If the water amount reaches to the required water level.(The washer will not work if the water amount does not reach the required water level) If it is set to "Delay" washing mode. (It will only start to work once the selected time is reached)</p>
No water flows in	<p>If the power is off or the fuse is burned out. If the water supply is cut off or the water pressure is too low. If the inlet hose is properly connected and the water tap is opened. If the filtering screen of the inlet valve is blocked by dirt. If the coil of inlet valve is damaged. (The slight electromagnetic sound is normal when the inlet valve is switched on.) If the "Start / Pause" button is pressed after the power switch is pressed.</p>
Abnormal draining	<p>If the water drain hose is placed very high. If the end of the water drain hose is kinked or crushed. If the internal rubber ring of the drain valve is blocked by dirt.</p>
Abnormal spin	<p>If the lid is closed. If items in the washer are unevenly distributed. If the washer is not placed on a stable surface, the floor is not flat, or the feet are not correctly adjusted.</p>

Description	Reason	Solution
E1	Alarm for abnormal water intake.	Check that the water tap is open.
E2	Alarm for incomplete water drainage.	Check the water level sensor and drain pump.
E3	Alarm to indicate the lid is not closed before wash and spin.	Close the lid. Press "Start" button.
E4	Alarm for unbalanced washing load.	Manually balance clothes in the barrel.
XX	Others	Please restart the washer first then call the service centre if issues are not resolved.

Note!

- After inspecting and resolving issues if possible, restart the appliance. If the issue reoccurs or other alarm codes are shown call a service technician.

MAINTENANCE

■ Technical Specifications

Standard Water Pressure		Grade of waterproof			
0.03MPa~0.8MPa		IPX4			
Model	Washing Capacity	Dimension (W*D*Hmm)	Net Weight	Rated input power	Power Supply
LWT1210	12.0kg	640*684*1085	53kg	550W	240V~,50Hz

Technical Information

■ Energy efficiency test program:

This is identified as follows for LWT1210:

Normal washing program where Water level is Max level, and wash Temperature is warm.

KLEENMAID WARRANTY

TERMS AND CONDITIONS

1. Compass Capital Services Pty Ltd ABN 96 138 214 525 trading as Kleenmaid will provide parts and labour to you the customer as set out herein.
2. Kleenmaid's Products come with guarantees that cannot be excluded under the Australian Consumer Law. You are entitled to a replacement or refund for a major failure and for compensation for any other reasonably foreseeable loss or damage. You are also entitled to have the goods repaired or replaced if the goods fail to be of acceptable quality and the failure does not amount to a major failure.
3. The benefits given to you under this Kleenmaid Warranty are in addition to other rights and remedies to which you may be entitled under the Australian Consumer Law in relation to the Product to which this Kleenmaid Warranty relates. Subject to the conditions below, the Product is warranted by Kleenmaid and/or its agents to be free from defects in materials and workmanship for the Warranty Period for normal Domestic Use.
4. Product Identification: -
 - a. Kleenmaid reserves the right to reject claims for any services or work where you cannot produce for verification the serial number and a proof of purchase for the Product (including but not limited to the original invoice).
 - b. this Kleenmaid Warranty will be voided if the serial number for the Product cannot be verified. This is not intended to exclude, restrict or modify any right or remedy to which you may otherwise be entitled under the consumer guarantee provisions of the Australian Consumer Law.
 - c. in the event that a request for repair is made against this Kleenmaid Warranty where the serial number for the Product cannot be verified or you cannot produce for verification a proof of purchase for the Product (including but not limited to the original invoice), the repairer will not carry out any repairs on the Product and you will be charged a service call-out fee.
5. What is covered by this Kleenmaid Warranty: -
 - a. the Product is covered for faulty workmanship or parts that have failed under normal Domestic Use.
 - b. Kleenmaid and/or its agents will determine by objective testing if there are any defects in the Product and/or faulty workmanship.
 - c. this Kleenmaid Warranty is only applicable if repairs on Products are carried out within Mainland Australia.
 - d. this Kleenmaid Warranty: -
 - i. covers a Product purchased as new, manufactured for use in Mainland Australia;
 - ii. commences from the date of delivery of the Product;
 - iii. provides for the labour and replacement parts necessary to maintain the Product in good operating condition as specified in this Kleenmaid Warranty, however, if repair is needed because of Product failure during normal Domestic Use, Kleenmaid has the option to repair or replace the defective Product or part of the Product with a product or part of like kind and quality. A replacement part may be new or reconditioned of like kind and quality and may cost less than the original Product purchased and no charges or refunds will be made based on the replacement product or part cost difference; and
 - iv. is only applicable when the Product is used and operated in accordance with the Manufacturer's instructions.
6. What is not Covered by this Kleenmaid Warranty (excluded):-
 - a. any damage or failure to or of the Product or part of the Product:
 - i. due to the Product being inadequately serviced to manufacturer's recommendations;
 - ii. resulting from environmental conditions including and not limited to dirt, dust, rodents, insects, rust, corrosion, salt built-up, of or in any part of the Product;
 - iii. resulting from excessive use but fair wear and tear is excepted;
 - iv. resulting from poor installation including and not limited to positioning and externally fitted equipment such as plumbing and drainage, cabling, antennae or due to incompatibility of connected equipment;
 - v. caused by overheating as a result of sitting or positioning of the Product, where there is no provision for adequate ventilation or adequate protection from excessive dust;
 - vi. if the Product has been dismantled, repaired or serviced by any person other than someone authorised by Kleenmaid or its agents or representatives;
 - vii. caused by power surges or spikes, including and not limited to, mains power and telecommunications connections, or to other unspecified sources, incorrect power current, voltage fluctuation, amperage fluctuation, rust or corrosion;
 - viii. if the Product is dropped, collision of the Product with another object, use for which the Product is not designed, damage to the Product caused by your own negligence, accidental or deliberate misuse of the Product by you, theft, abuse, vandalism, flood, fire, earthquake, electrical storms or any other act of God or any war related events; or
 - ix. due to the introduction of abnormal heat loads to the Product;
 - b. costs of attendance and testing where no fault or defect covered by the terms of this Kleenmaid Warranty is identified in the Product;
 - c. initial setup and installation of the Product;
 - d. normal maintenance costs and costs incurred through the installation of items listed as requiring periodic replacement;
 - e. Products with removed or altered serial numbers;
 - f. broken or cracked glass other than transport damage to the initial point of delivery;
 - g. consumables such as but not limited to bulbs/globes, seals, filters, batteries and remote controls;
 - h. removal and reinstallation of an internal component not performed by an authorised Kleenmaid agent or representative or authorised service centre;
 - i. cosmetic or structural items; or
 - j. any failures due to interference from or with other products and/or sources.
7. This Kleenmaid Warranty ceases if: -
 - a. the Product ceases to carry the original manufacturer's serial number or is sold at an auction;
 - b. the Product is rented; or
 - c. there is failure to pay monies owing on invoices as a result of non-warranty work being carried out at the request of the end user as per point 16 below.
8. Neither Kleenmaid nor its representatives provide loan equipment under the terms of this Kleenmaid Warranty.
9. Any unauthorised access to the internal hardware of the Product will void this Kleenmaid Warranty.

10. Repair Notice: Products presented for repair may be replaced by refurbished Products of the same type rather than being repaired. Refurbished parts may be used to repair the Products.
11. Replacement items are "like for like" and is not "new for old" and does not indicate in any way that a faulty Product will be replaced with a new part or unit. "Like for like" may either be a quality checked, refurbished or reconditioned unit of the same or later batch of model/size/specifications
12. The cost of making a claim under this Kleenmaid Warranty is not covered by Kleenmaid, including any costs of transportation or travel expenses between your home and your nearest authorised service agent.
13. Kleenmaid accepts no liability for items that are lost, damaged, or stolen as a result of freight, transport or storage. If you are required to transport the Product to an authorised service centre, you must ensure that it is securely packed and insured.
14. On Public Holidays or other periods when regular business and wholesale operations are temporarily ceased, repairer availability and warranty response times may extend beyond the standard response times due to the unavailability of repairers and parts.
15. For any repair performed on a Product under this Kleenmaid Warranty where no fault can be found, or the item is deemed by Kleenmaid or an authorised agent, to be not faulty under this Kleenmaid Warranty, or the repair or fault is not covered under this Kleenmaid Warranty, a 'No Fault Found' fee is payable by you. Kleenmaid will advise you of this cost and seek your agreement to pay such costs before commencing such repairs.
16. Any repairs or services required that are outside the terms and conditions of this Kleenmaid Warranty can be carried out at your request at your cost (including where the Product has not been installed or set up correctly). Kleenmaid will always advise you of this cost and seek your agreement to pay such costs before commencing such repairs. A credit card may be required prior to the commencement of such services.
17. Extra charges will be payable by the customer should the Product not be readily accessible without special equipment, such as but not limited to cranes and lifts or should the Product be installed in a position that service access is blocked and/or repair work is not possible without uninstalling the Product to gain access.
18. You, the customer, may be entitled to purchase an extended warranty in respect of the Product. Any extended warranty will not be issued by Kleenmaid but by a third party. Any extended warranty services will be provided directly by the third party as principal and not as agent for Kleenmaid, under their extended warranty terms and conditions and not under this Kleenmaid Warranty.
19. To make a claim under this Kleenmaid Warranty, please have your proof of purchase and the serial number of the Product ready and call (02) 9310 1207 during business hours.
20. This Kleenmaid Warranty is given by:
 - Name: Compass Capital Services Pty Ltd ABN 96 138 214 525 trading as Kleenmaid
 - Business address: Level 2, Suite 3, 204 Botany Rd, Alexandria NSW Australia 2015
 - Telephone: (02) 9310 1207
21. Definitions:
 - a. **Australian Consumer Law** means the *Competition and Consumer Act 2010* (Cth).
 - b. **Domestic Use** means use of the Product for personal, domestic or household purposes.
 - c. **Kleenmaid** means Compass Capital Services Pty Ltd ABN 96 138 214 525 trading as Kleenmaid.
 - d. **Mainland Australia** means the following States and Territories of Australia: New South Wales, Victoria, South Australia, Western Australia, Queensland, Tasmania, Northern Territory, Australian Capital Territory.
 - e. **Product** means the appliance sold by Kleenmaid to you as evidenced by the original purchase invoice.
 - f. **Warranty Period** means the period of 60 months for domestic use, 12 months for non-domestic use or such alternative period as may be specified.

UPDATE NOTICE: This Kleenmaid Warranty is current as at 1 January 2019 but is subject to variation from time to time. For the latest version of the Kleenmaid Warranty, please see our website <http://www.kleenmaid-appliances.com.au/support/your-kleenmaid-warranty> or phone us on (02) 9310 1207.

Other products available in the Kleenmaid range of appliances

- | Washing machines
- | Clothes dryers
- | Dishwashers
- | Ovens
- | Cooktops
- | Steam ovens
- | Microwave ovens Built in espresso coffee machines
- | Rangehoods
- | Freestanding ovens
- | Refrigerators & Freezers
- | Beverage Serving Cabinets
- | Water Dispensers Vacuum Cleaners

To register your warranty or make a warranty claim, scan this QR code:



Compass Capital Services Pty Limited
trading as Kleenmaid
ABN 96138214525

Level 2, 204 Botany Road Alexandria
NSW 2015



Register your Kleenmaid
Appliances Warranty
www.kleenmaidwarranty.com.au



Request a Warranty Service
www.kleenmaidwarranty.com.au

E: support@kleenmaid.com.au
Please download the current User Manual for this
appliance at www.kleenmaid.com.au

 **kleenmaid**