

Note: This product should be installed, by suitably qualified persons, in a fit for purpose application, to suitable materials, using suitable fixings and comply with any relevant codes. It should be inspected periodically for signs of wear and tear that may affect performance or safety.

Dimensions are subject to manufacturer's tolerance of +/-10mm. Rough-in should be completed with each fixture.

Important: Installation Instructions are subject to change without notice.

Please visit www.rba.com.au for latest revision.



RBA1211-600
RBA1211-600-001
RBA1211-613

'Formatta' Sensor Tapware, Electric
 'Formatta' Sensor Tapware, 20 Seconds, Electric
 'Formatta' Sensor Tapware, Battery



Model	Sensor Tapware
Date	16/10/20
Doc#	ii/rba1211-series/1020

Supersedes all previous

Description

Constructed from heavy duty DR brass with a polished chrome finish and an above bench solenoid for ease of maintenance, the Formatta sensor tap is suitable for public washrooms, offices, schools, shopping centres, stadiums, airports & accessible installations. The sensor detects the presence of the user's hand(s) in the field directly in front of the sensor in the water stream - this activates the flow of water until the hands are removed from the field, or for the RBA1211-600-001 until 20 seconds has passed.

Technical Data

Inlet	½" BSP (G1/2")
Operating Pressure	200 – 500 kPa
Flow Time	On detection in field + 2 seconds [60s max.]
Maximum Temp.	50°C
Flow Rate	5L per minute
Warranty	1 Year
Bench Hole Size	Ø 28-32mm
Maximum Bench Thickness	38mm

RBA1211-600 and RBA1211-600-001

Power Supply	190 - 240V AC 50-60Hz
Product Operation Voltage	DC 12V

RBA1211-613

Power Supply	4 x AA alkaline batteries
--------------	---------------------------

**For Battery recycling options in your area visit <https://recyclingnearyou.com.au/>

Trouble Shooting - RBA1211-613 (Cont'd)

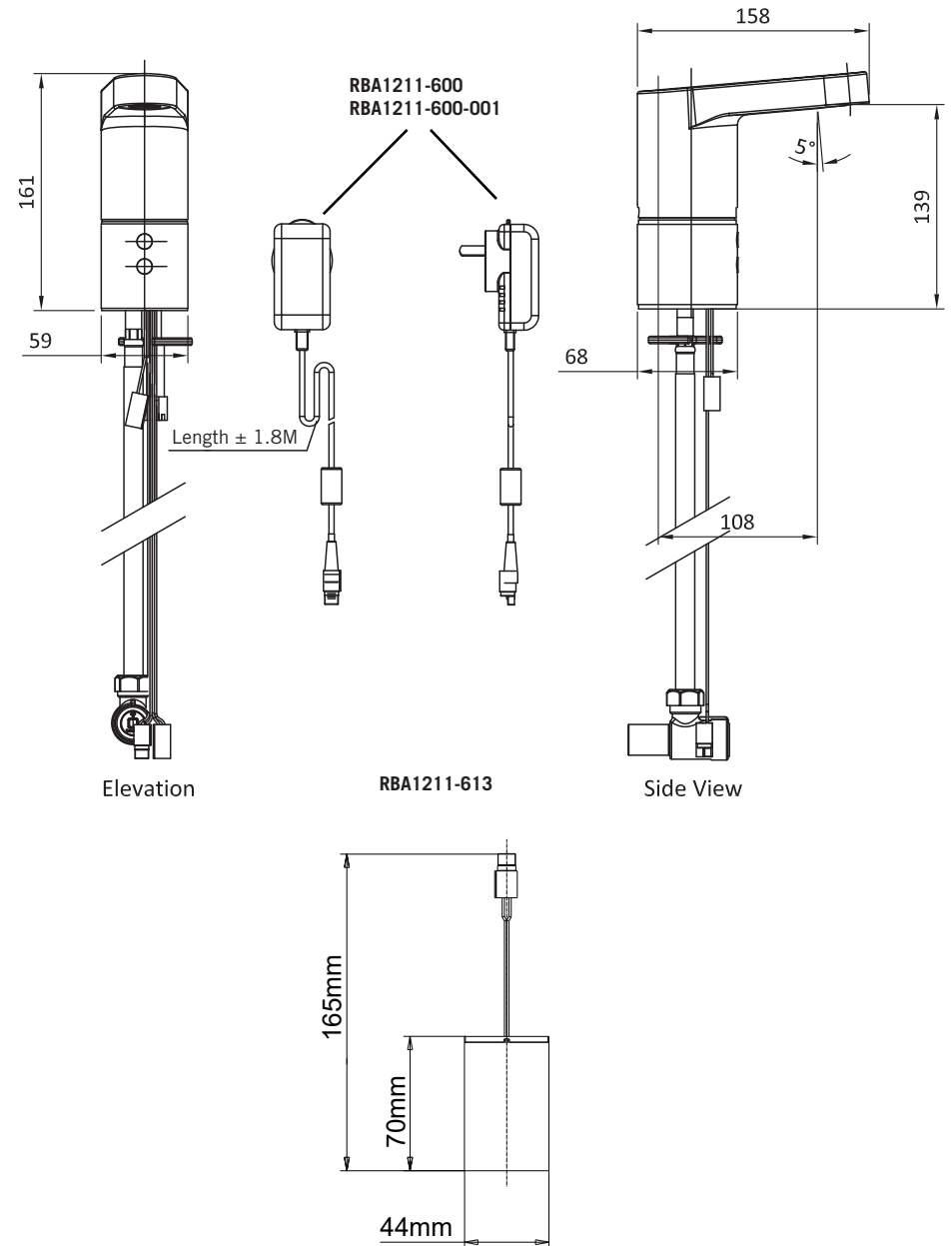
PROBLEM	PROBABLE CAUSE	SOLUTION
Water flows continuously (does not stop)	Object in front or within sensor's range	Remove the object
	Sensor, cables or power supply unit damaged	Contact RBA Group
	Power supply connected directly to solenoid valve	Disconnect power supply wiring under basin and connect power supply to sensor plug. Ensure to also connect sensor to solenoid plug.
	Dirt in diaphragm	Turn water and power off. Clean and replace diaphragm. Turn water and power on.
Water Flows (intermittent failures or incorrect function)	Highly reflective surface	Unit not recommended for use with high polished stainless steel basins (satin finish OK). Place dull coloured strip opposite sensor.
	Hands too low or high in basin & not directly in front of sensor when in use	Users to place hands in flow stream directly in front of sensor to correctly activate

Trouble Shooting - RBA1211-613

PROBLEM	PROBABLE CAUSE	SOLUTION
Water droplets appearing under basin	Gasket improperly installed	Install or realign gasket
	Temperature indicator not installed	Insert appropriate temperature indicator
	Damaged 'Formatta' Valve Body O-ring	Replace O-ring
Water does not flow and solenoid valve does produce an audible CLICK	Water turned off	Turn water on
	Inlet valve closed or clogged	Open valve or remove and clean strainer (refer RBA1074-999-001 detail)
	Aerator clogged	Remove and clean aerator
	Braided hose kinked	Replace braided hose
	Solenoid valve incorrectly installed	Check flow direction on valve's body. Reassemble if necessary
Water does not flow and solenoid valve does <u>not</u> produce an audible CLICK	Batteries low. Red LED blinks once every 1 second	Replace the batteries. Install the batteries exactly as shown.
	Batteries assembled with inverse polarities.	Install the batteries exactly as shown
	Connection failure between sensor and solenoid valve.	Connect the sensor cable in the solenoid valve cable.
	Sensor cable is damaged	Contact RBA Group
	Sensor is damaged	Contact RBA Group
Sensor light registers but no flow	Direct/bright light	Remove direct/bright light

Continued...

Dimensions



Installation Instructions

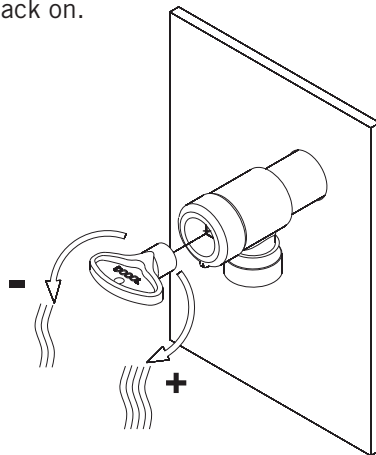
Installation must be carried out in accordance with local authority requirements.

1. Installation to be in accordance with the AS/NZ3500 series of Standards plus all local and statutory requirements. For Australia, Installation shall be in accordance with the PCA [Plumbing Code of Australia] and any relevant local authority requirements.
2. Flush the line thoroughly and remove all dirt and grit from the line before connecting the tap
3. Install the taps as shown in diagrams A-H (on page 5)
4. Before turning on the water, remove aerator and flush the tap
5. Replace aerator and check for leaks
6. Insert the appropriate coloured indicator into the hole at the tap base (typically blue for cold and yellow for warm water)

RBA1074-999-001 Details

The RBA1074-999-001 Angle Valve is a stop strainer that is supplied with the Formatta Sensor Tap. This must be installed as part of the sensor tap installation as it prevents debris from entering the sensor and causing issues with diaphragm and flow control. Failure to install will void warranty.

To clean the strainer or isolate the sensor tap, simply use the special key provided and turn the strainer counter clock wise and remove. The angle valve contains a spring loaded stop that will automatically turn the water supply off on removal. Clean strainer or isolate tap where required. Replace strainer to turn the water supply back on.



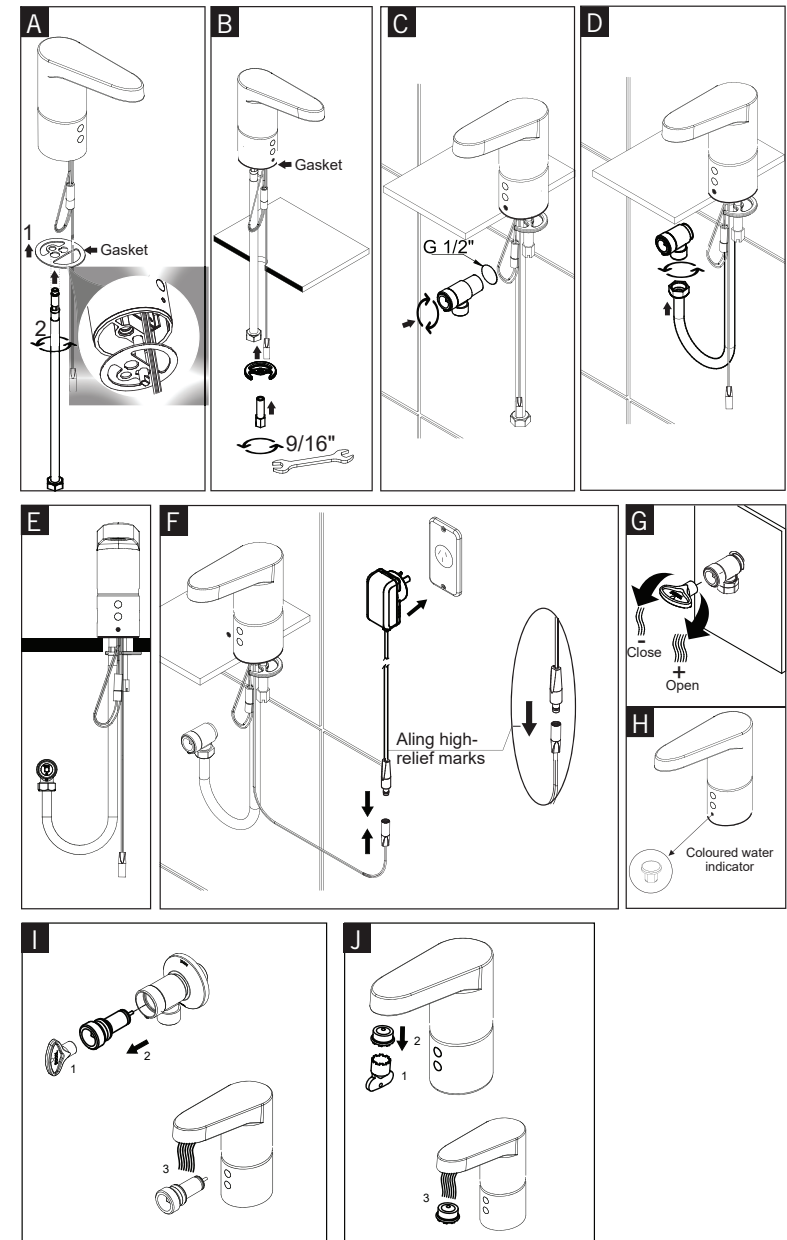
Trouble Shooting - RBA121-600 & RBA1211-600-001 (Cont'd)

PROBLEM	PROBABLE CAUSE	SOLUTION
Water flows continuously (does not stop)	Object in front or within sensor's range	Remove the object
	Sensor, cables or power supply unit damaged	Contact RBA Group
	Power supply connected directly to solenoid valve	Disconnect power supply wiring under basin and connect power supply to sensor plug. Ensure to also connect sensor to solenoid plug.
Water Flows (intermittent failures or incorrect function)	Dirt in diaphragm	Turn water and power off. Clean and replace diaphragm. Turn water and power on.
	Highly reflective surface	Unit not recommended for use with high polished stainless steel basins (satin finish OK). Place dull coloured strip opposite sensor.
	Hands too low or high in basin & not directly in front of sensor when in use	Users to place hands in flow stream directly in front of sensor to correctly activate

Trouble Shooting - RBA121-600 & RBA1211-600-001

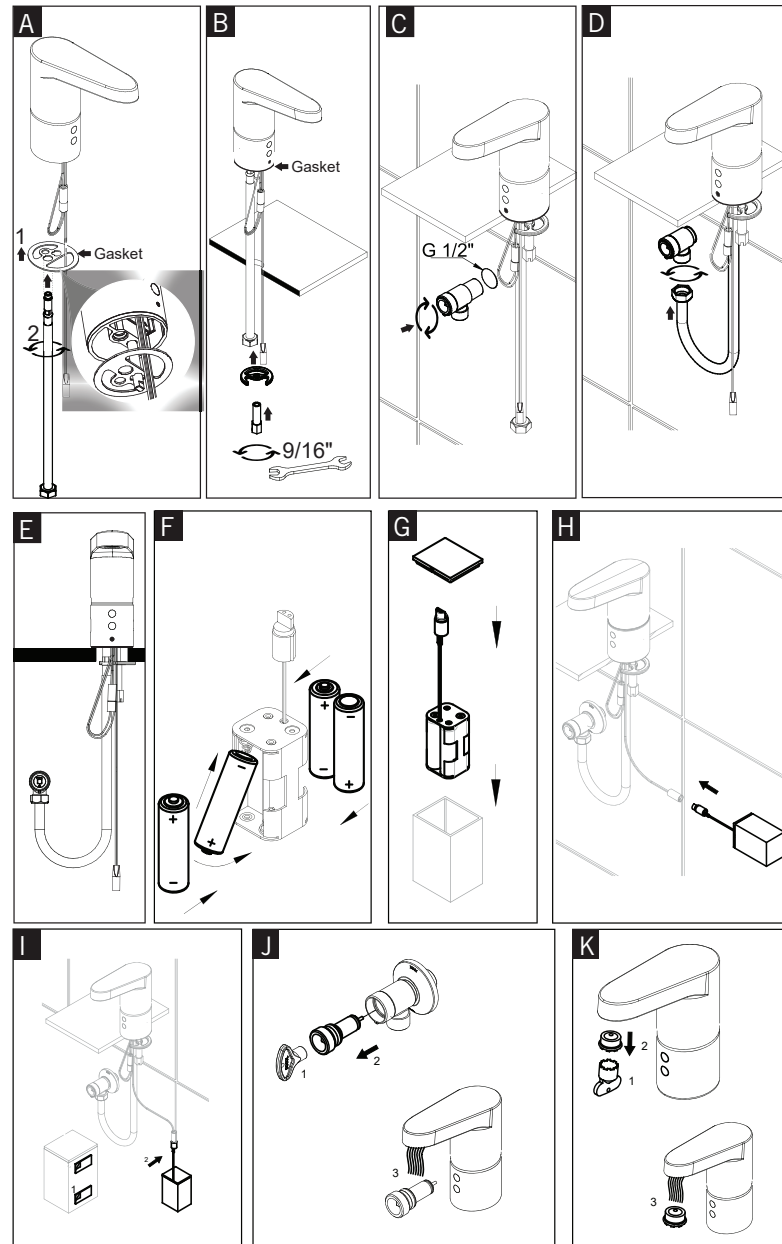
PROBLEM	PROBABLE CAUSE	SOLUTION
Water droplets appearing under basin	Gasket improperly installed	Install or realign gasket
	Temperature indicator not installed	Insert appropriate temperature indicator
	Damaged 'Formatta' Valve Body O-ring	Replace O-ring
Water does not flow and solenoid valve does produce an audible CLICK	Water turned off	Turn water on
	Inlet valve closed or clogged	Open valve or remove and clean strainer (refer RBA1074-999-001 detail)
	Aerator clogged	Remove and clean aerator
	Braided hose kinked	Replace braided hose
	Solenoid valve incorrectly installed	Check flow direction on valve's body. Reassemble if necessary
Water does not flow and solenoid valve does <u>not</u> produce an audible CLICK	No power connected	Check power supply & breaker
	Power supply unit disconnected	Check it and plug it in
	Sensor, cables or power supply unit damaged	Check electrical plug pins are OK. Where damage has occurred contact product distributor
	Direct/bright light	Remove direct/bright light
Sensor light registers but no flow	Direct/bright light	Remove direct/bright light

RBA1211-600 & RBA1211-600-001

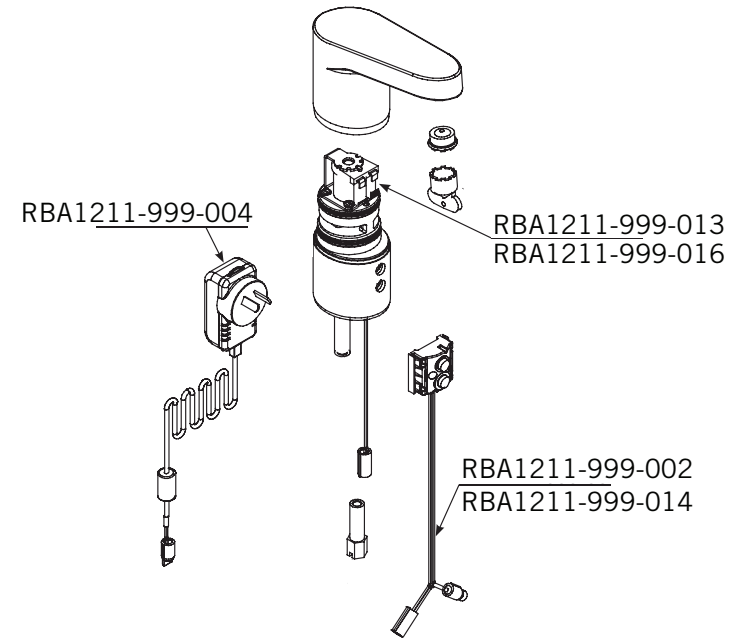


Continued...

RBA1211-613



Spare Parts



Code Number	Part Description
RBA1211-600 & RBA1211-600-001	
RBA1211-999-002	Sensor Pack to suit Formatta, Electric
RBA1211-999-004	240V Power Pack to suit Formatta, Electric
RBA1211-999-013	Solenoid Valve to suit Formatta, Electric
RBA1211-613	
RBA1211-999-014	Sensor Pack to suit Formatta, Battery
RBA1211-999-015	Power Pack to suit Formatta, Battery
RBA1211-999-016	Solenoid Valve to suit Formatta, Battery