

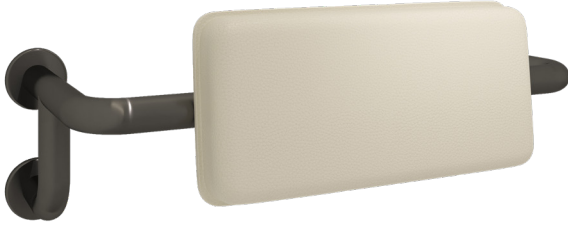
Model RBA4150-103

Materials & Features

Stainless steel & white polyurethane backrest meets the requirements of AS1428.1-2009 and can withstand an applied force of 1100N in any direction when installed correctly. Backrest is not site adjustable. The bracket cover conceals the fixings.

Technical Detail

Rail: 32mm [Dia], 304 Satin Stainless Steel
 Backrest: White polyurethane, 40mm thick
 Fixings: Included



Available Model

RBA4150-103 Classic Backrest to AS1428.1

Related Products

RBA4150-101 Backrest (site adjustable)

Installation

Warning: Grab rails are no stronger than the anchors or walls to which they are attached and must be firmly secured in order to support the loads for which they are intended. Refer local codes and Installation Instructions for location of fixing points, method of attachment, etc.

Important: Installation instructions and current rough-in details should be furnished with each fixture. Do not rough in without certified dimensions. Dimensions are subject to manufacturer's tolerance of +/-10mm.

