

Caroma®

CI/SfB	(74.2)	g3
Date	May 2014	

Supersedes all previous issues

LIANO®

2.43.1

Ceramic Semi Recessed Vanity Basin

Nominal Size 420mm x 470mm



Liano



Tapware shown not included.

The **Liano** semi recessed basin has been designed to meet the needs of the designer market for prestige projects. An architectural minimalist style was adopted for the square **Liano** incorporating a generous bowl area and distinctive tapware platform. The rim is sealed to the counter top with an acetic cured silicone sealant. The basin is suitable for domestic, commercial and disabled people applications.

Tap Holes: Basin available in: One taphole – centre option Code No.661215.

Waste Outlet: The basin has been designed for the Caroma Uni-waste outlet suitable for a 40mm trap connection. White plastic flush fitting Uni plug and waste supplied. For applications where a chrome plated brass waste is required there are four suitable Uni-wastes available in the following options — Flush Fitting Plug and Waste Code No.687140, Vandal Resistant Flush Fitting Plug and Waste Code No.687141, Covered Plug and Waste Code No.687142 and Vandal Resistant Covered Plug and Waste Code No.687143.

Bowl Capacity: 4.8 litres to overflow.

Overflow: Overflow available only. Designed for maximum tap flow rate of 15 litres/ minute.

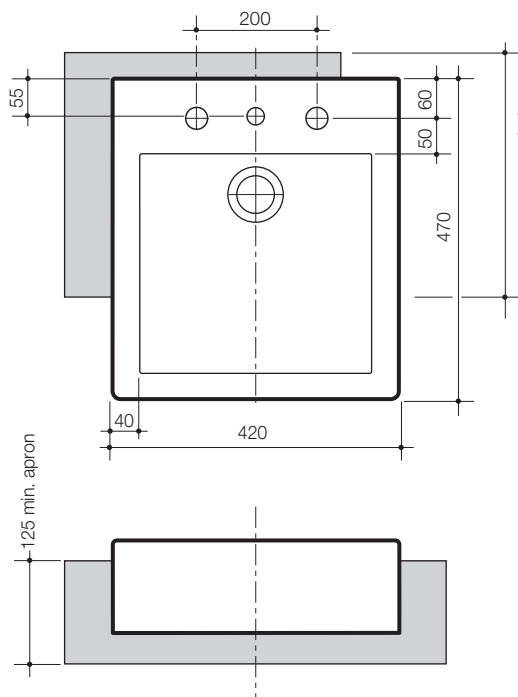
Fixing: **D.250 Bracket with Tie Hooks** – Supplied. Recommended for domestic and general commercial use. Two D.250 brackets are fixed to the underside of the counter top to secure the tie hooks which anchor the back of the basin to the counter.

The basin must be sealed to the top and front surface of the counter with an acetic cured silicone sealant. **Epoxy type glues must not be used.** The basin is supplied with a template which must be used for the counter top cut-out.

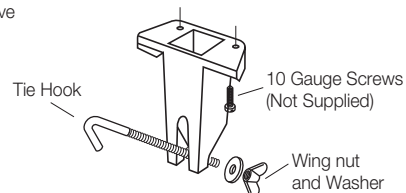
Important: For granite or marble tops, fix two 20mm thick wooden blocks in the bracket position on the underside of the granite/marble with fast setting two part epoxy. When fully set screw the brackets into position on the wooden blocks. Other suitable fastening systems maybe used.

Colours: White only.

Dimensions: All dimensions are in millimetres and are subject to normal manufacturing variations. Caroma pursues a policy of continuing improvement in design and performance of its products. The right is therefore reserved to vary specifications without notice.



Variable when using D. 250 Tie Brackets.
Note: Local authorities have requirements for minimum basin to wall dimensions.



D.250 Tie Bracket

