

Caroma®

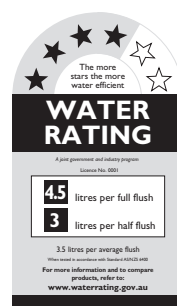
Flex

Vitreous China Wall Faced Box Rim Pan

CI/SfB	(74.2)	g3
Date	October 2015	

Supersedes all previous issues

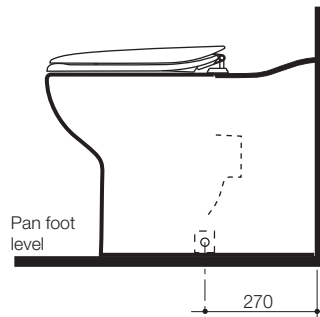
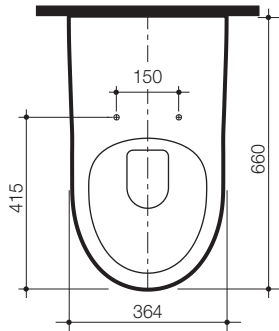
4.06.1





This pan is designed specifically for commercial retrofit applications. The pan features a unique flexible inlet and outlet connection system, offering a retrofit for existing wall hung and wall faced pans installed without replacing drain lines. The wall faced foot print covers many existing wall hung pans reducing the need for re-tiling. Featuring rounded contours and concealed plumbing fittings with a projection from the wall of 660mm. The pan is suitable for domestic and commercial applications.

- Pan:** Flex 4.5 litre full flush box rim pan.
- Traps:** Flexible set out P trap installation.
- Inlet:** Flexible set out for inlet connections (range 355 - 400mm). Supplied with flexible inlet connectors for 40mm and 50mm copper flush pipe. Optional flexible inlet connectors for 40mm PVC and 50mm PVC are available, see table below.
- Cisterns and Flushvalves:** Caroma Concealed Cistern options available – **Invisi II Inwall/Induct/Inceiling Cisterns, Schell WC Flushvalve Inwall/Induct.** For installation options see chapter 6 CISTERNS of the Caroma Technical Manual for further details.
- Fixing:** The pan can be fixed to the floor by either bedding into mortar or using the D82 Concealed Fixing Bracket.
- Seats:** The **Pressalit, Pedigree II** and **Pedigree II Care** seats are recommended. See chapter 5.01 SEATS of the Caroma Technical Manual for further details.
- Colours:** White only.
- Installation:** The installation of the toilet suite shall be in accordance with the normal minimum drainline grade requirements in AS/NZS 3500.2.
- Dimensions:** All dimensions are in millimetres and are subject to normal manufacturing variations. Caroma pursues a policy of continuing improvement in design and performance of its products. The right is therefore reserved to vary specifications without notice.

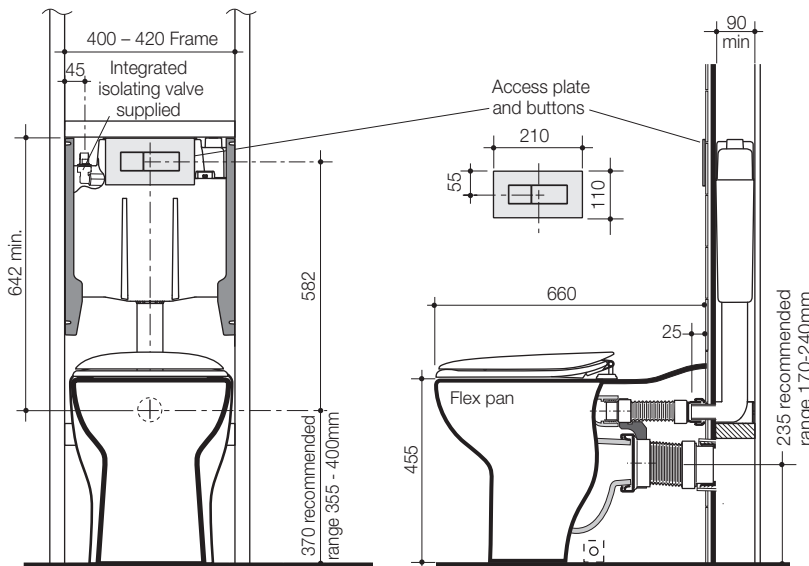


Flex Pan	Code No.
Back inlet 4.5 litre	601970W

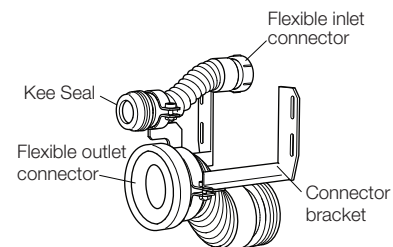
To achieve 4 star WELS rating, this pan should be matched with:

Invisi II 4 star 4.5/3 litre Cistern	237001
--------------------------------------	--------

Existing flushpipe	Suitable flexible inlet connector
40mm copper	687057 (supplied)
50mm copper/2" flush pipe	687058 (supplied)
40mm PVC	687055
50mm PVC	687056
100mm copper & PVC outlet pipe	687060 (supplied)



Flexible connectors and connector bracket



Note: All height dimensions to underside of pan, make allowance for bedding.

Bedding: The pan should be fixed to the floor with a sand cement mixture of 3:1 to a depth of 60mm. Do not use lime or fast drying cement in the bedding mixture. When bedded the back of the foot of the pan should be approximately 10mm above the finished floor.

Bracket fixing: The pan should be bedded with an acetic cured silicone sealant and fixed with the D82 Fixing Brackets supplied.