

INSTALLATION INSTRUCTIONS

SPACE SOLUTION CLOSE COUPLED SKEW TOILET SUITES



PRODUCT Space Solution Standard CC Skew Suite C6799.C6269.SK
CODES: Space Solution Corner CC Skew Suite C6799.C6267.SK

The Space Solutions Skew suites are close coupled and semi-concealed and are available in both standard or corner configuration.

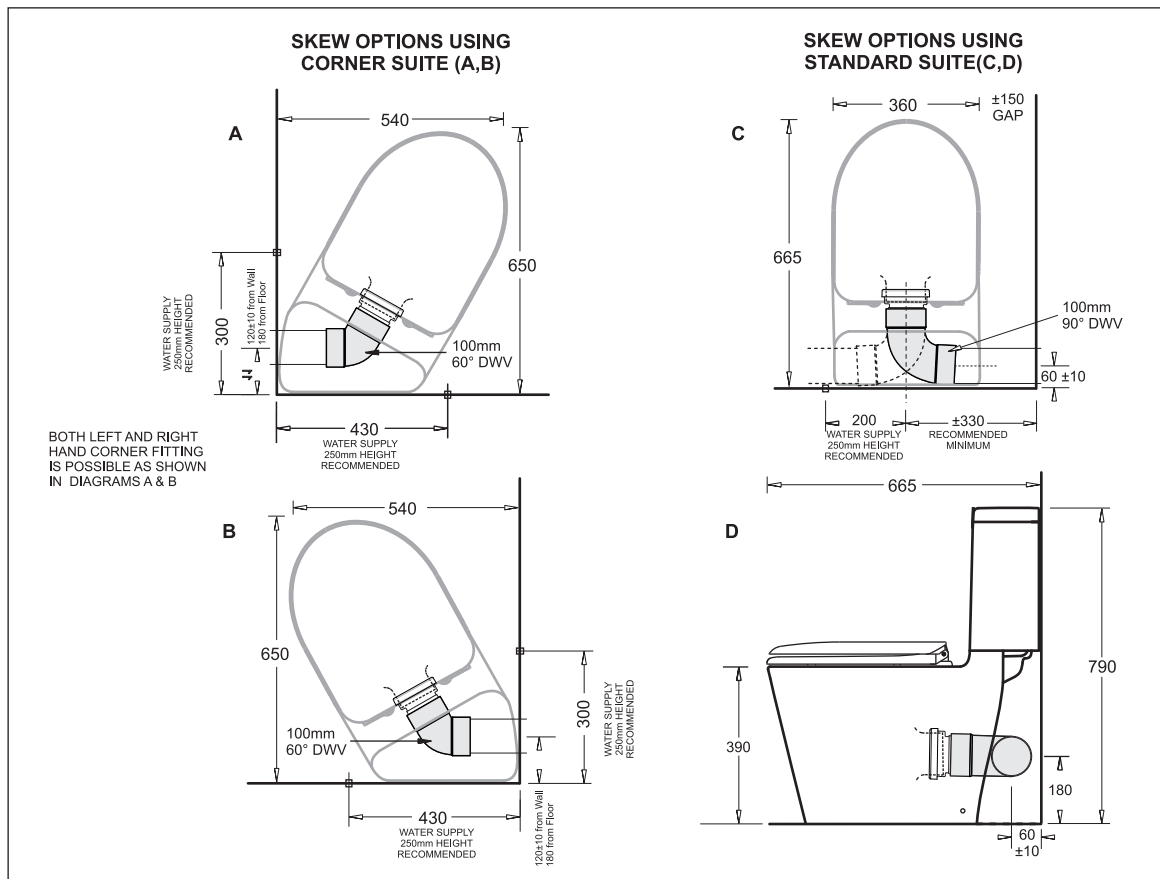
The cistern is bolted to the pan from the top and can be removed for servicing.

The suite is supplied with a floor fixing kit and a Deluxe soft close seat.

PRODUCT DETAILS

		Code
Space Solution Standard Close Coupled Skew Suite		C6799.C6269SK
Toilet	Space Solution Close Coupled Pan	C6799
Cistern	Space Solution Cistern	C6269
Seat	Deluxe Soft Close Seat	C90801
Sewer	Pan Collar	X215
	90° DWV Bend	X216
Space Solution Corner Close Coupled Skew Suite		C6799.C6267SK
Toilet	Space Solution Close Coupled Pan	C6799
Cistern	Space Solution Corner Cistern	C6267
Seat	Deluxe Soft Close Seat	C90801
Sewer	Pan Collar	X215
	60° DWV Bend	X217

INSTALLATION DIMENSIONS



All installations should be carried out by a licensed plumber in compliance with the Plumbing Code of Australia and any State or Local Authority Regulations

INSTALLATION STEPS

1. Inspect pan, cistern and seat for any transit damage before starting installation.
2. Check site roughing in, cistern tap position and assembly dimensions before commencing.
3. The WC pan is fixed down using the floor attachment fittings(provided). Check that the pan can be installed level.
4. Position the pan correctly and mark the location of the floor fixing brackets.
5. Install the floor brackets using the anchor screws supplied.
6. Locate the side-wall skew sewer connection and check the alignment and fitting to the pan.
7. Place the WC into position ensuring it seals firmly to the pan connector
8. Insert the floor bracket fixation screws through the fixing holes in the base of the pan and tighten. Attach the decorative caps.
10. Attach the flexible hose to the inlet valve connection in the base of the cistern.
11. Place the rubber cone sealing-ring in position and place the cistern in position on the WC pan. Check that the rubber seal is seated correctly.
12. Secure the cistern to the pan by screwing the cistern fixing capnuts and washers to the bolts fixed to the back of the pan (the body of the outlet valve may be temporarily removed from the base to make this easier). Screw down firmly to compress the cone seal ring. (See the below diagram)
13. Always flush the water supply pipes before connecting the cistern inlet valve to the cistern tap.
14. Fill the cistern and check the water level, if necessary adjust the inlet valve float.
15. Attach the cistern lid and buttons and test flush several times while checking for leaks.
16. Waterproof sealant finishing may be used around the base of the WC.
17. Fit seat