

CABINET SPECIFICATIONS

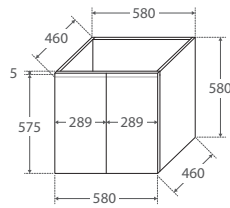


FINGERPULL Gloss White Wall-Hung Cabinet

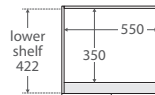
- Gloss white exterior
- Bright white interior
- U-shape fingerpull channel
- Soft-close doors & drawers
- Full extension drawer runners
- 16mm thick backing boards & drawer bases
- FSC certified, eco-friendly E0 board
- 580mm tall (without top)

600 width
\$349

60F



TOP VIEW: SHELF AREA



SIDE VIEW: SHELF STORAGE

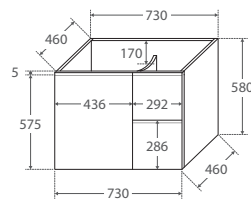


**U-shape
fingerpull
channel**

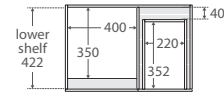


750 width
\$425

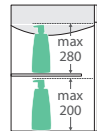
LEFT drawers: 75FL
RIGHT drawers: 75FR



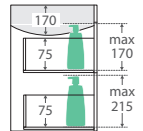
TOP VIEW: SHELF AREA & DRAWER AREA



SIDE VIEW: SHELF STORAGE

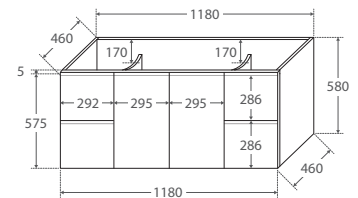


SIDE VIEW: RECESS & DRAWER STORAGE

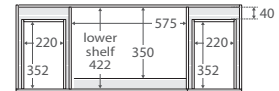


1200 width
\$650

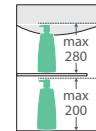
120F



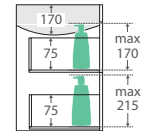
TOP VIEW: SHELF AREA & DRAWER AREA



SIDE VIEW: SHELF STORAGE

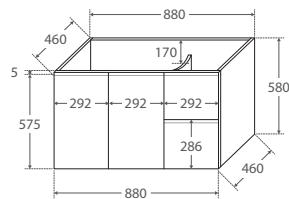


SIDE VIEW: RECESS & DRAWER STORAGE

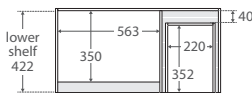


900 width
\$480

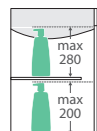
LEFT drawers: 90FL
RIGHT drawers: 90FR



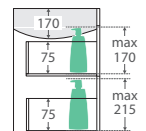
TOP VIEW: SHELF AREA & DRAWER AREA



SIDE VIEW: SHELF STORAGE

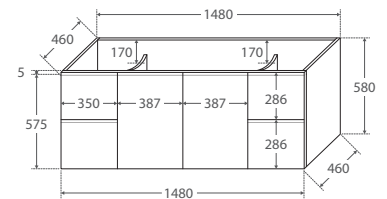


SIDE VIEW: RECESS & DRAWER STORAGE

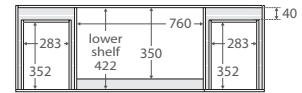


1500 width
\$850

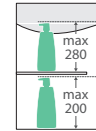
150F



TOP VIEW: SHELF AREA & DRAWER AREA



SIDE VIEW: SHELF STORAGE



SIDE VIEW: RECESS & DRAWER STORAGE

