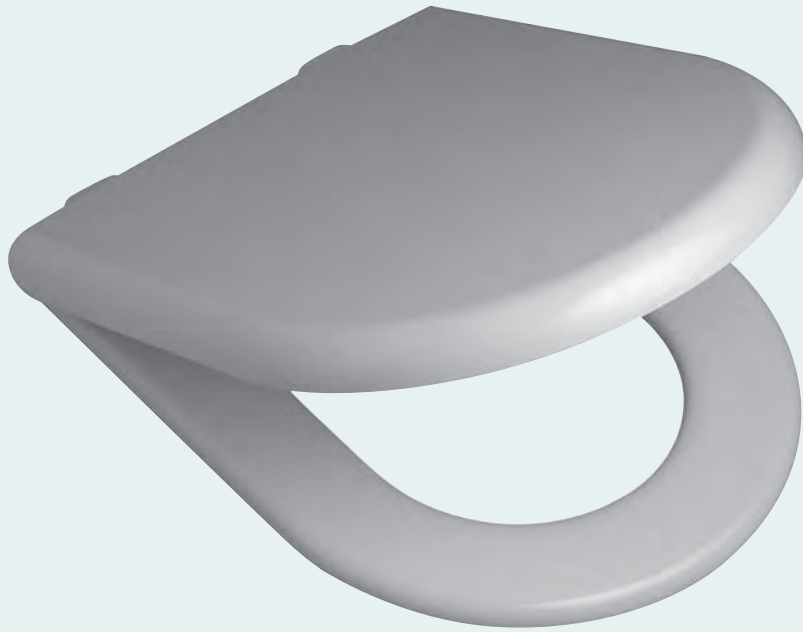


SfB Code

_____ (74.9) _____



Seido

The Seido toilet seat is constructed from compression moulded plastic. Its clean simple lines are matched with the Seido pans with double flap seat and chrome plastic soft-close hinges.

Pans

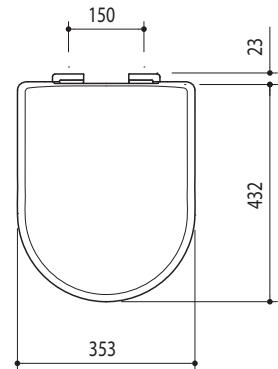
Suitable for use with the Seido Wall Faced and Wall Hung Pans.

Colours available

White.

Product codes

Soft close hinges (300023).



Lucid

The Lucid toilet seat is constructed from compression moulded plastic. Its square uncomplicated lines are matched with the Lucid Wall Hung pan with double flap seat and blind fixing hinges.

Pans

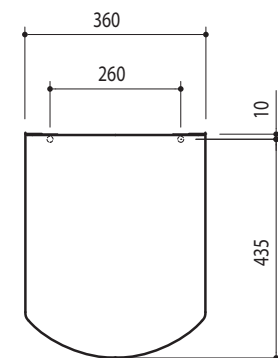
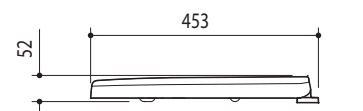
Suitable for use with Lucid wall hung pans.

Colours available

White.

Product codes

Blind Fix (300003).



Newport

The Newport toilet seat is constructed from compression moulded plastic. Its attractive design is matched perfectly with the pan with double-flap seat and easy-fix dual-position stainless steel hinges.

Pans

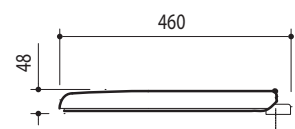
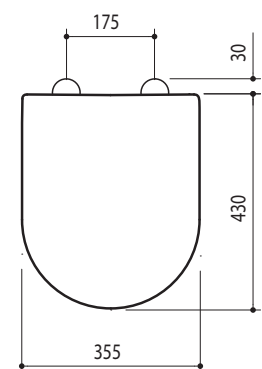
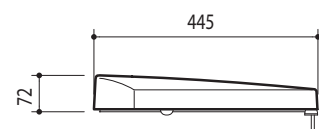
Suitable for use with the Newport Close-coupled and Wall Faced toilet pans.

Colours available

White, Ivory.

Product codes

Stainless steel hinges (current version) (813303). Soft close hinges (813007) white only.



Dimensions are in mm and subject to normal manufacturing tolerances. The manufacturer reserves the right to alter specifications without notice.

Drawing Scale 1:15

Thermolite

The Thermolite toilet seat is constructed from compression moulded plastic with double flap seat. Available as standard with stainless steel hinges or chrome plated soft-close hinges.

Pans

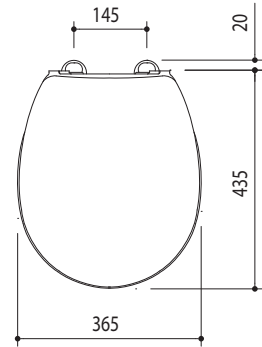
Suitable for use with Regent close-coupled pans.

Colours available

White.

Product codes

Standard stainless steel hinges (800297). Soft close hinges (800296).



Premier

The Premier toilet seat is constructed from injection-moulded polypropylene. It is a medium weight double-flap toilet seat.

Pans

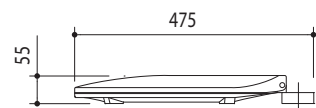
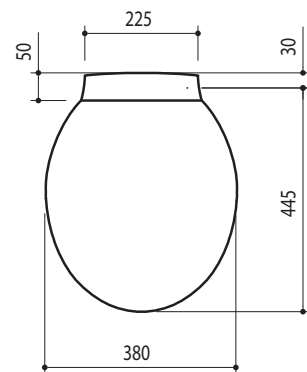
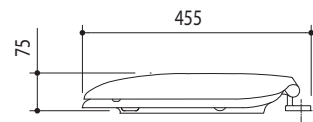
Suitable for use with universal connector pans.

Colours available

White, Ivory.

Product codes

861152.



Dimensions are in mm and subject to normal manufacturing tolerances. The manufacturer reserves the right to alter specifications without notice.

Drawing Scale 1:15