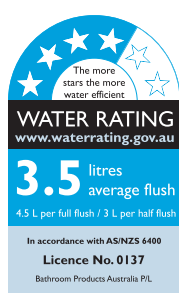
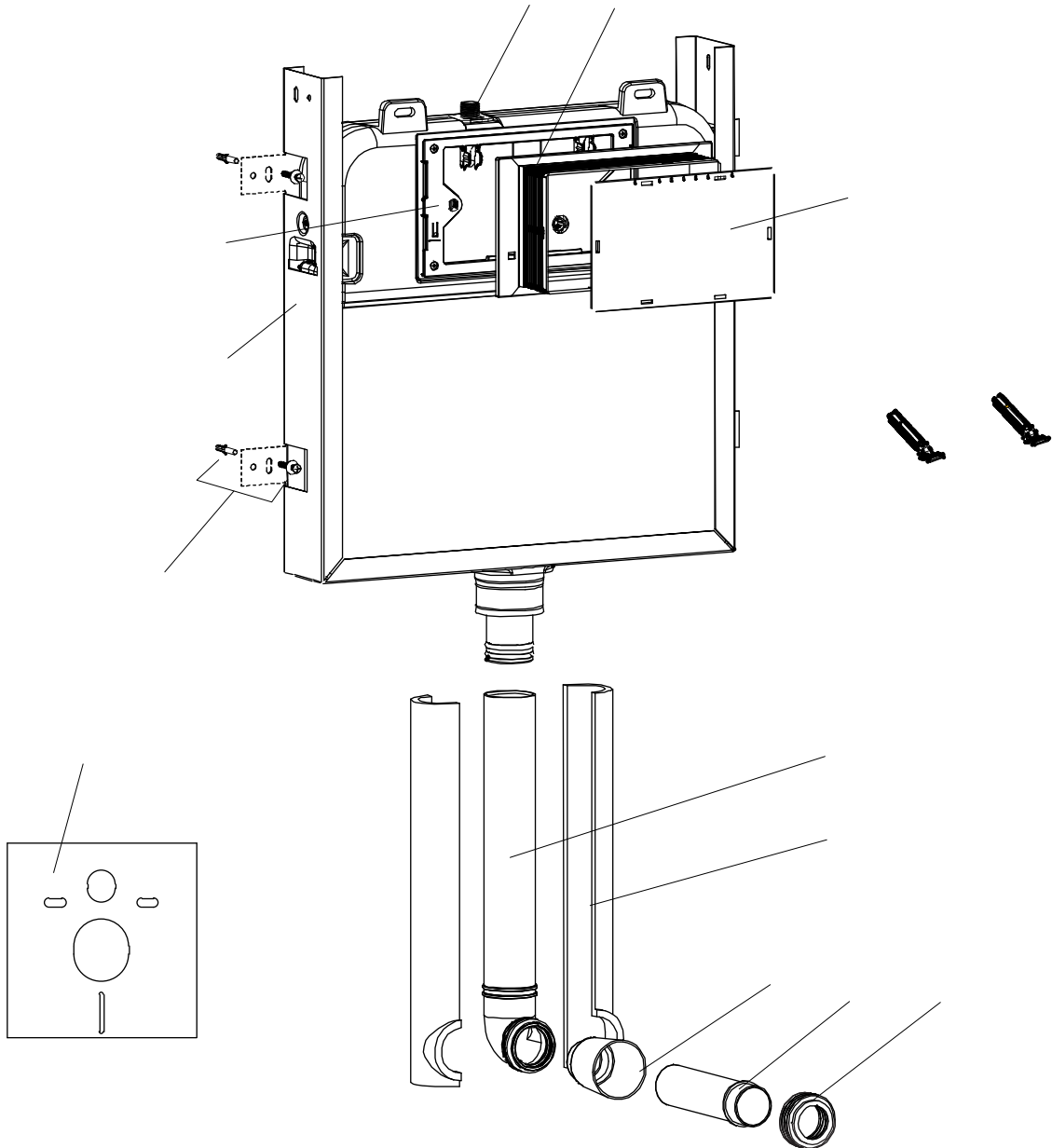


ECONOFLUSH UNFRAMED IN-WALL CISTERN

INSTALLATION INSTRUCTIONS



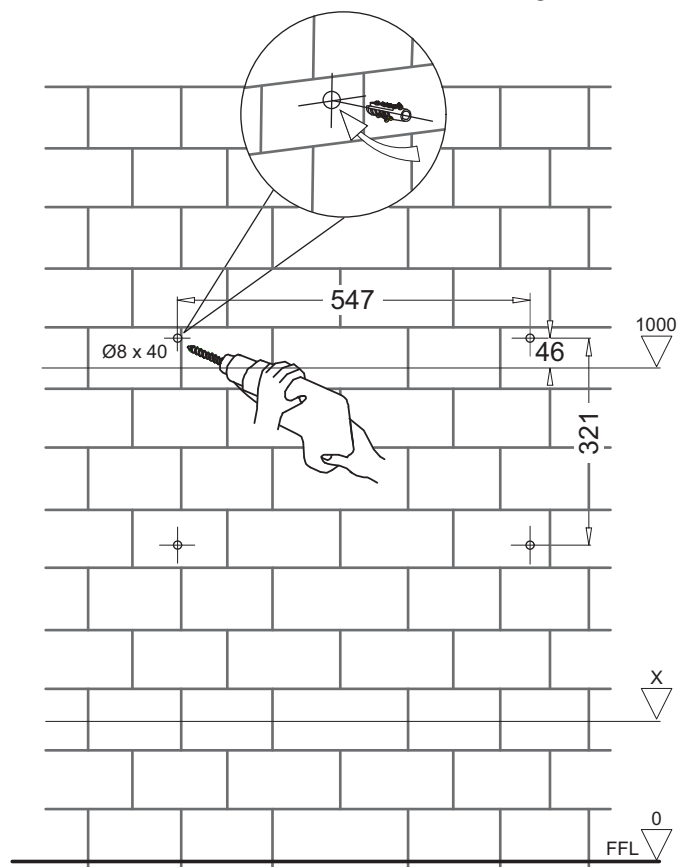
Main installation components



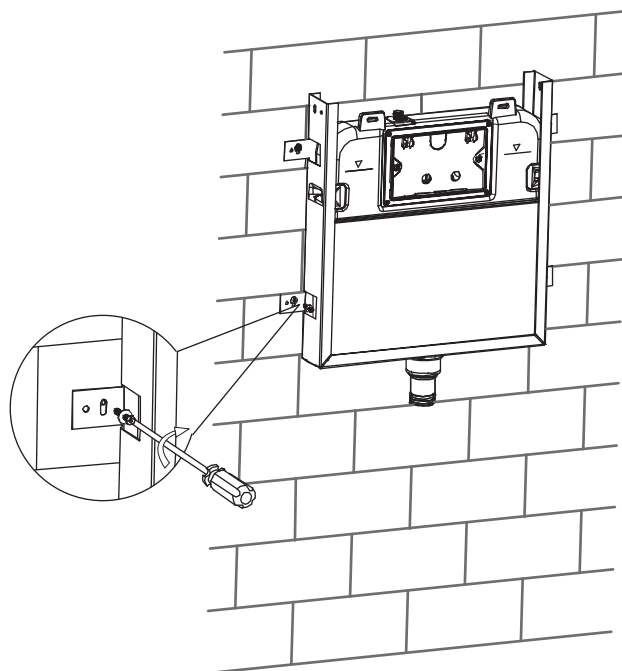
| No. | Description | Item code | Qty |
|-----|----------------------|-----------|-----|
| 1 | Mounting screw | XJ167 | 4 |
| 2 | Plastic plug | | 1 |
| 3 | Button box | | 1 |
| 4 | Flush pipe plug | | 1 |
| 5 | Rubber keeseal | | 1 |
| 6 | Flush pipe | | 1 |
| 7 | Cistern outlet pipe | XJ167A | 1 |
| 8 | Outlet pipe cover | | 2 |
| 9 | Water supply valve | XJ166C | 1 |
| 10 | Mounting box bracket | XJ166D | 1 |
| 11 | Metal support frame | | 1 |
| 12 | Liner | | 1 |
| 13 | Fixing rod | XJ166G | 2 |

2. Drill the mounting screw holes

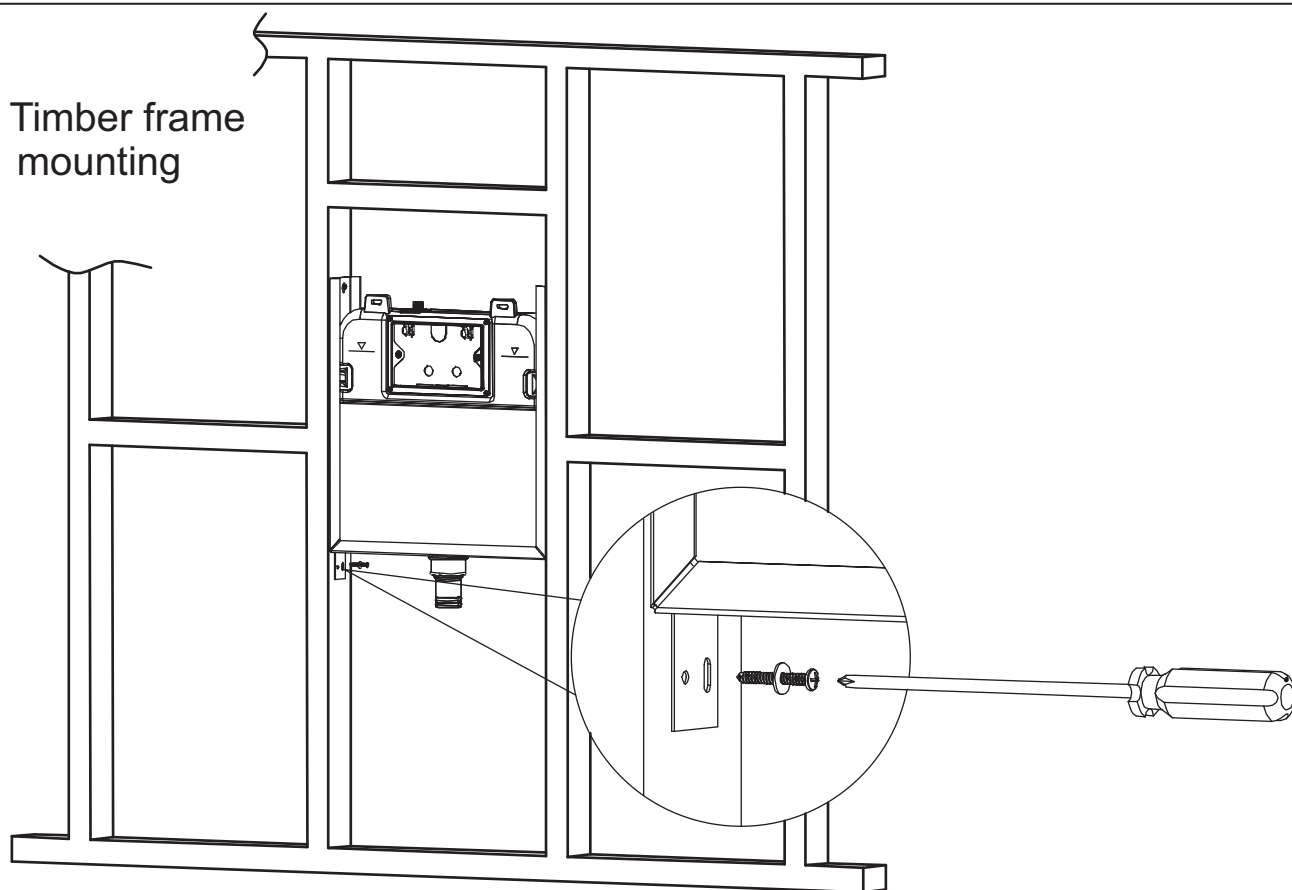
The hole dimensions shown are nominal.
Use the frame itself as the hole location guide.



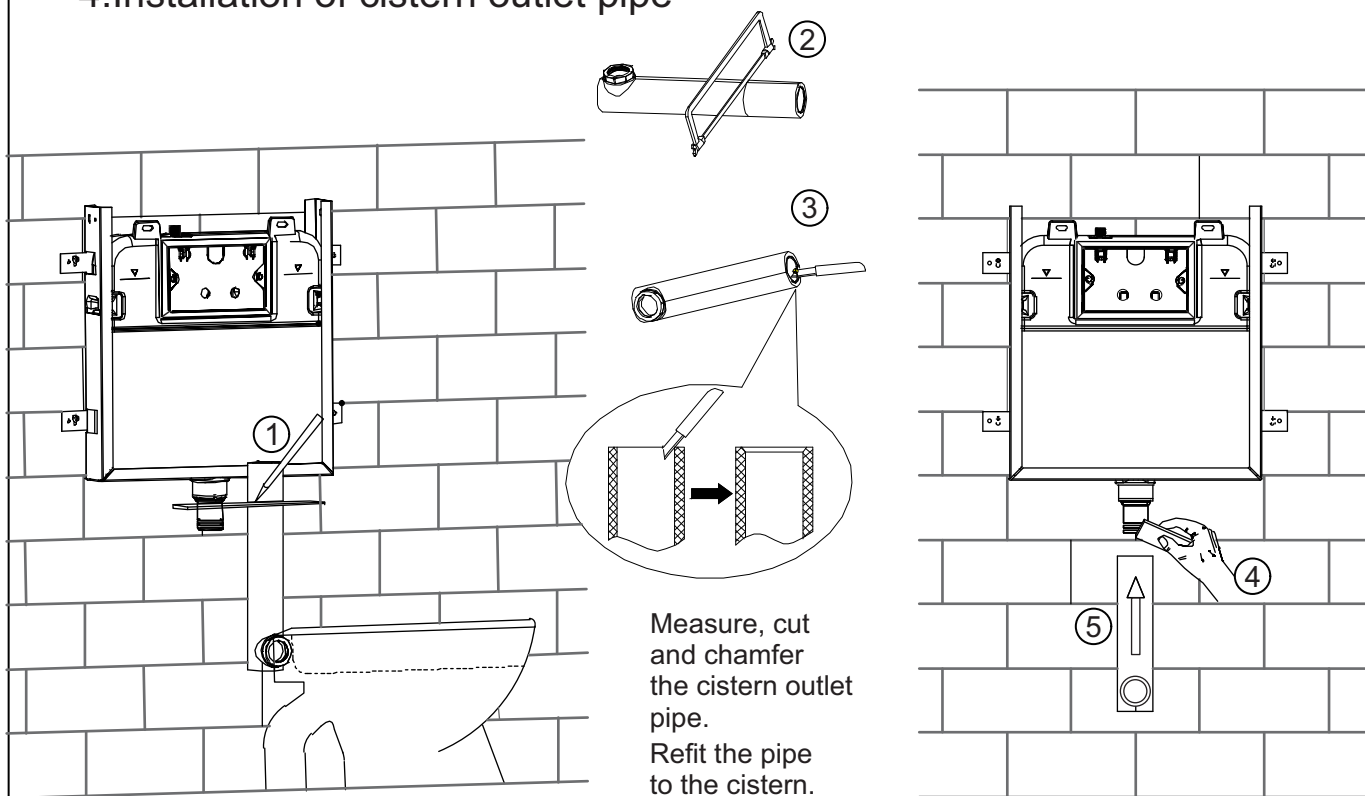
3A. Wall mounting



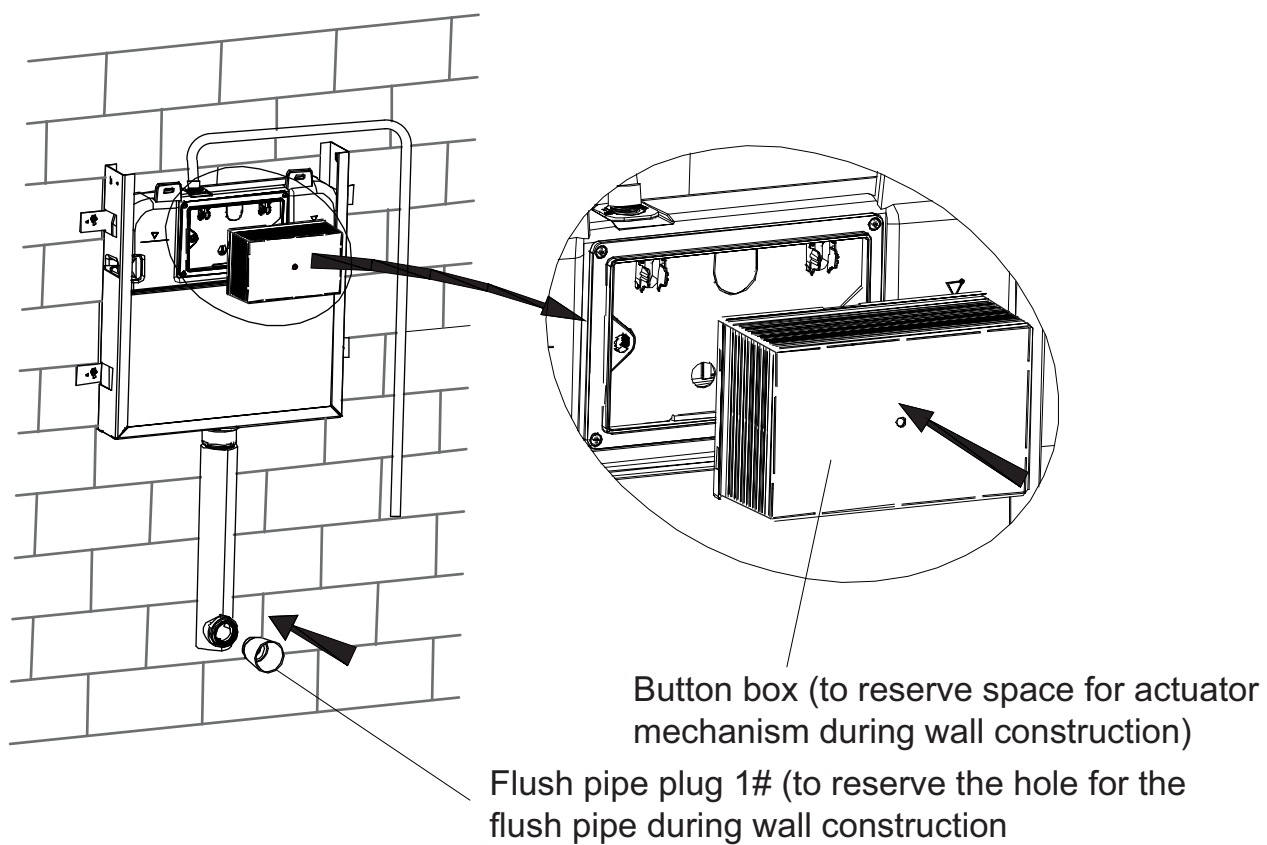
3B. Timber frame mounting



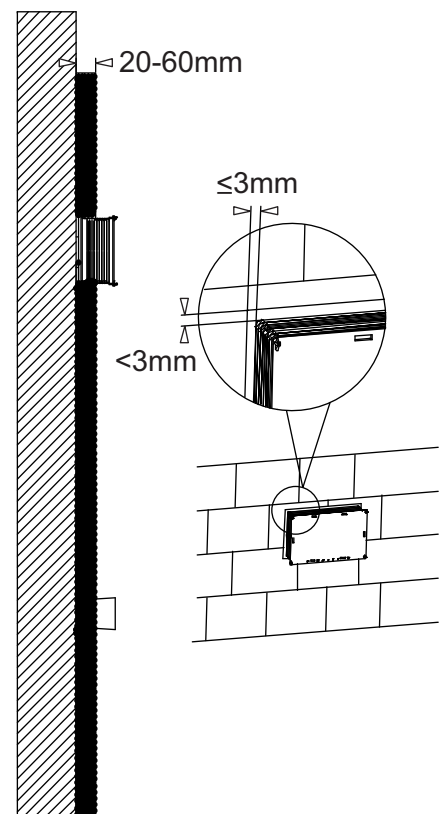
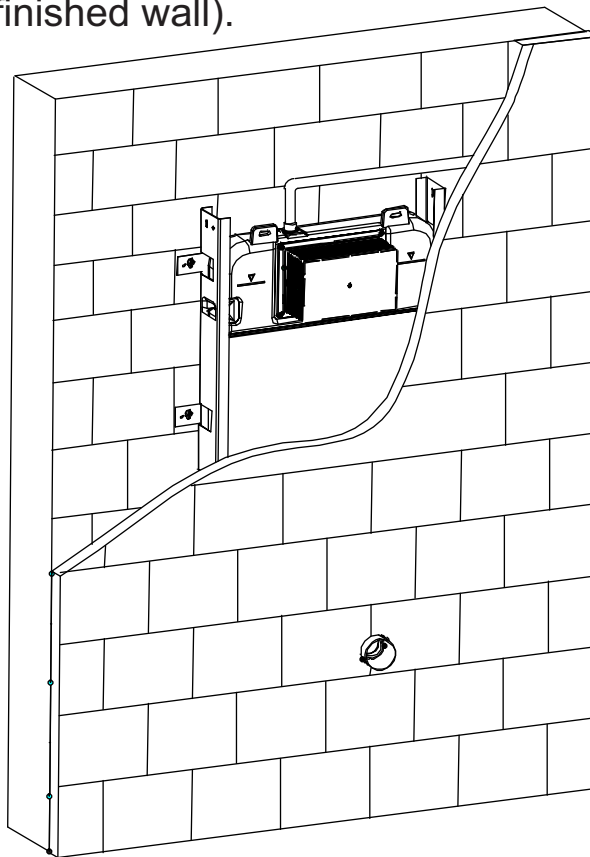
4. Installation of cistern outlet pipe



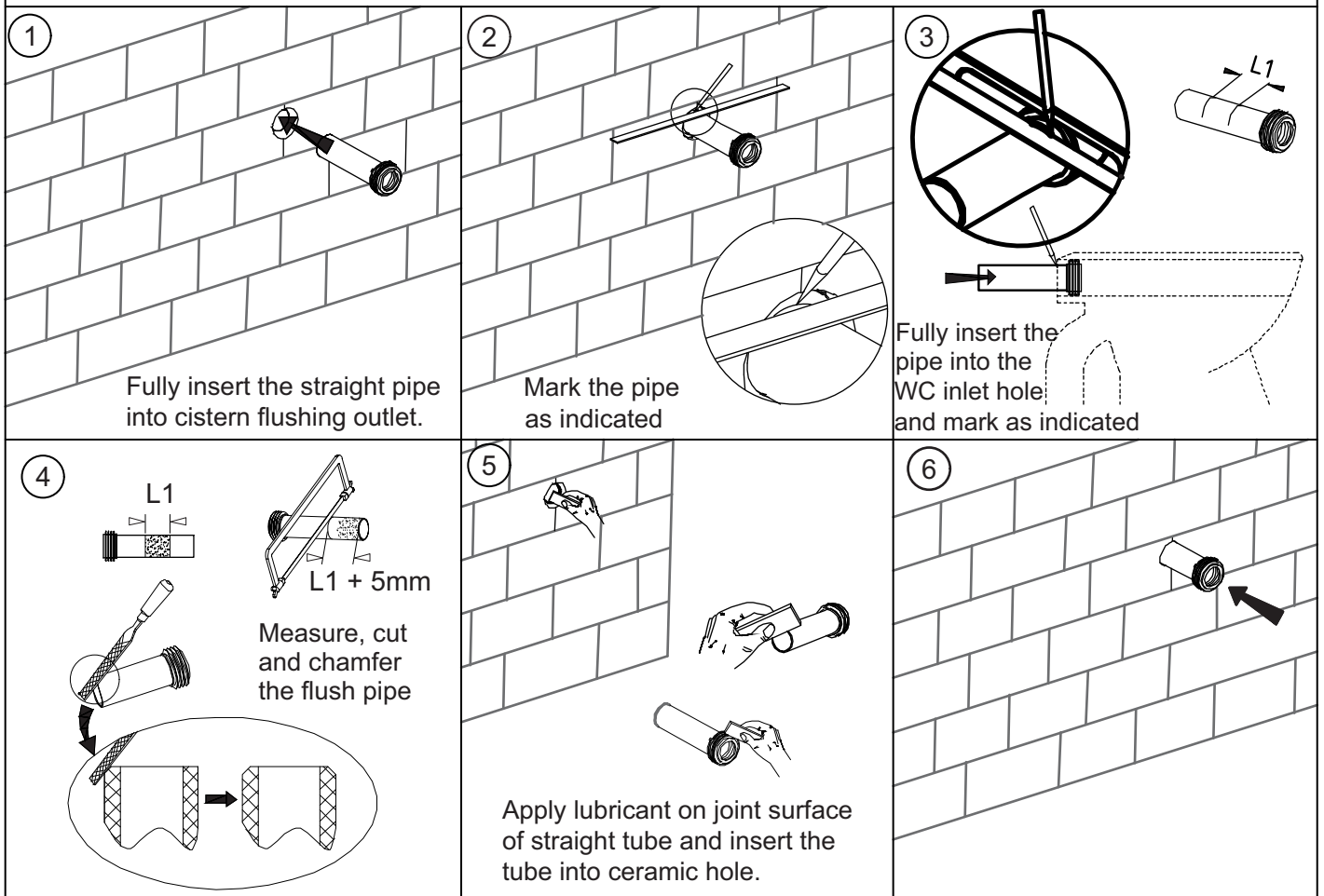
5. Mounting of installation accessories



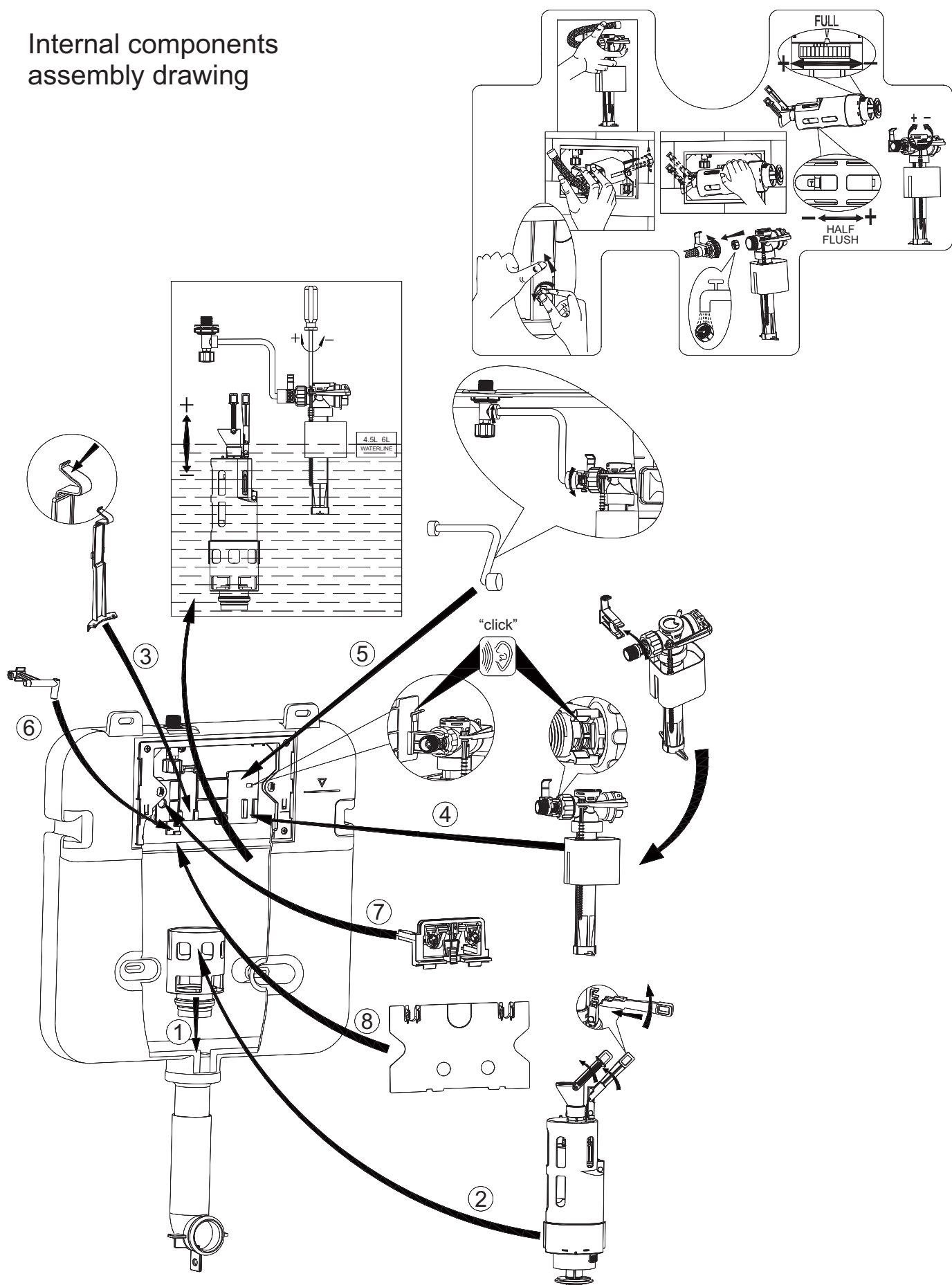
6. Wall thickness range 20-60mm (from frame outside surface to finished wall).



7. Installation of straight tube



Internal components assembly drawing



The internal flushing mechanisms are pre-installed, this diagram is for reference only.