

# INSTALLATION INSTRUCTIONS

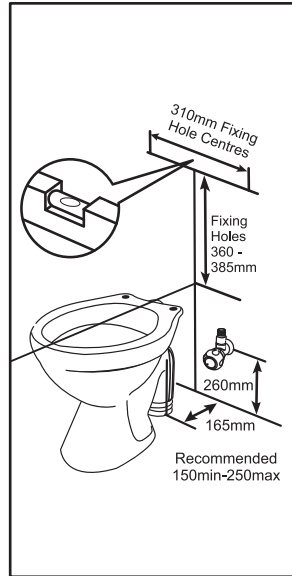
## MODE CISTERN SEAT AND LINK



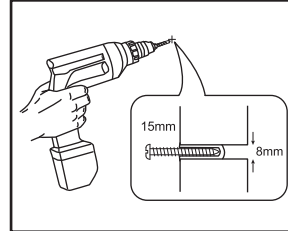
PRODUCT CODE: G1210A

### INSTALLATION STEPS

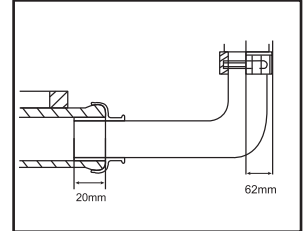
- 1** Check that the cistern can be installed within the tolerances shown.  
Mark the position of the fixing screw holes - use the keyholes or the clips for the cistern mounting.  
Ensure that the holes are level.



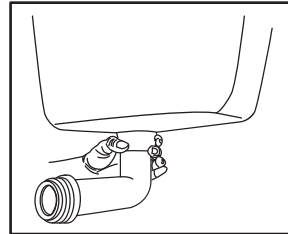
- 2** Drill 8mm diameter holes and insert the plastic wall plugs provided and leave the screws protruding by approximately 15mm.



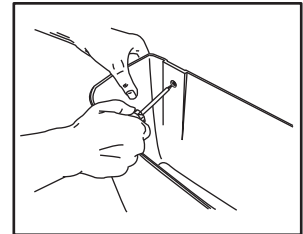
- 3** Cut the flush pipe to suit the installation and fit the appropriate rubber connector



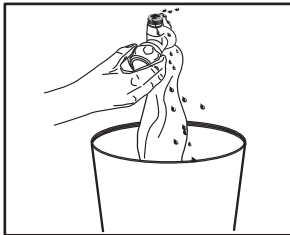
- 4** Fit the capnut



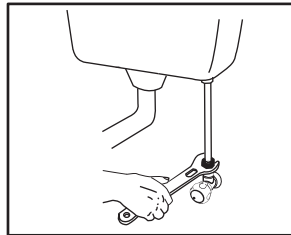
- 5** Tighten the protruding screws to the cistern.



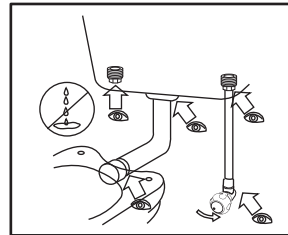
- 6** Flush water before connection to inlet valve.



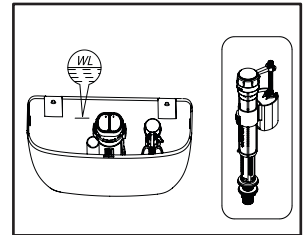
- 7** Fit the water supply pipe to inlet valve using an approved fitting.



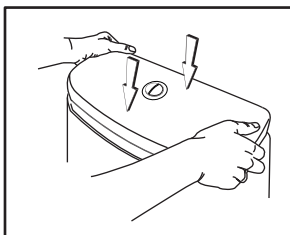
- 8** Turn on the water and check for leaks (as per drawing).



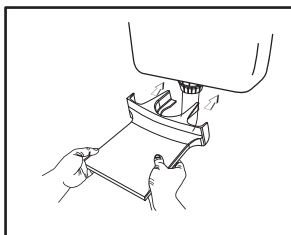
- 9** Check the level if necessary adjust inlet valve.



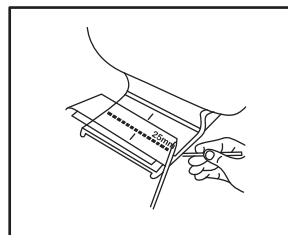
- 10** Ensure spreader is in place and fit the lid.



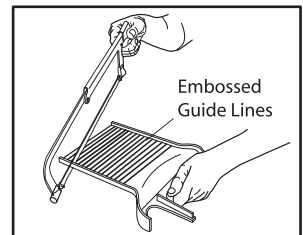
- 11** Continue from step 3 - Fit in the link piece to cap nut.



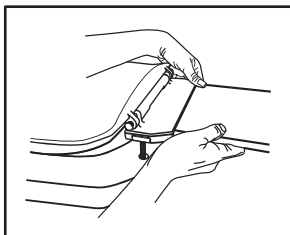
- 12** Clip the link piece in position and mark as shown by positioning the seat flap.



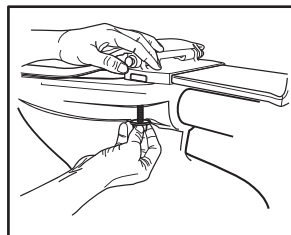
- 13** Cut off the excess. There are cutting guide lines on the underside.



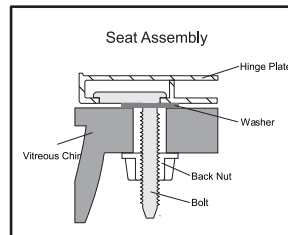
- 14** Fix the bolts to the seat and fit the link piece into the seat flap.



- 15** Tighten the seat nuts. Ensure the rubber washers are correctly fitted



- 16** Seat assembly arrangement



It is recommended that the cistern is test flushed several times to check the performance



**WARNING**  
DO NOT USE CHLORINE/CHEMICAL SANITISERS IN THE CISTERN TANK. THE CHEMICALS IN SANITISERS MAY RESULT IN COMPONENT DAMAGE AND WILL VOID THE PRODUCT WARRANTY.

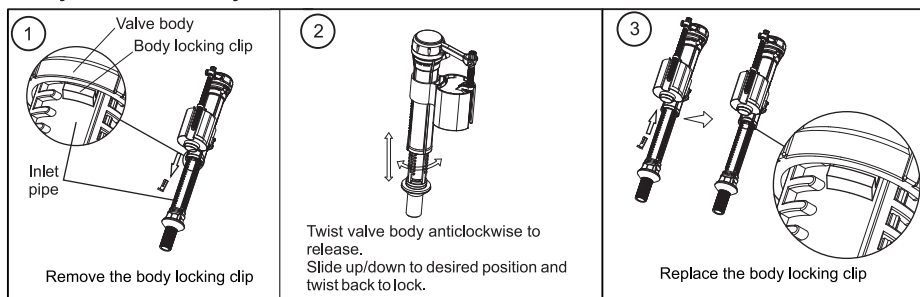
All installations should be carried out by a licensed plumber in compliance with the Plumbing Code of Australia and any State or Local Authority Regulations

# VALVE SERVICE



## INLET VALVE SERVICE

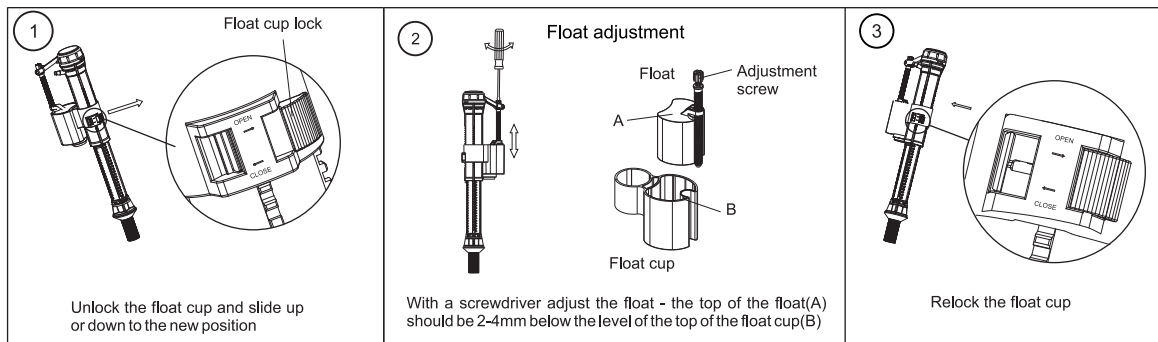
### 1. Major water level adjustment



### WARNING

DO NOT USE CHLORINE/CHEMICAL SANITISERS IN THE CISTERN TANK. SUCH USE MAY RESULT IN DAMAGE TO TANK COMPONENTS AND WILL VOID THE PRODUCT WARRANTY

### 2. Minor water level adjustment

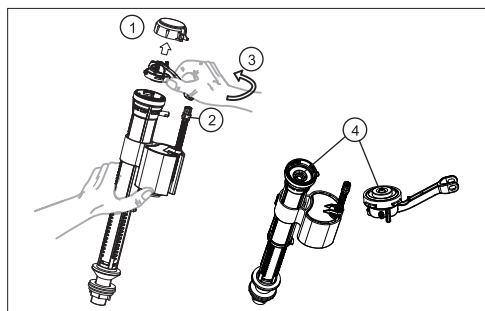


### 3. Cleaning the valve diaphragm

It is possible for dirt/debris to prevent the valve from shutting off.

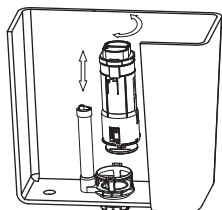
To remedy this the diaphragm may be cleaned as follows:

1. Remove the cover cap
2. Unclip the float arm from the adjustment screw
3. Twist the plastic top-assembly firmly anti-clockwise and remove it from the valve body
4. Inspect both rubber diaphragm and valve seat. Rinse under running water to remove dirt/debris
5. Re assemble in reverse order



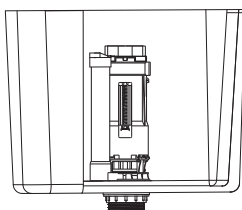
## OUTLET VALVE SERVICE

### Removal



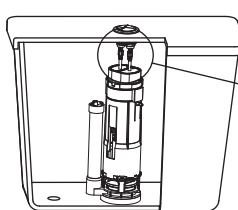
Valve may be removed for service - twist to unlock

### Assembly

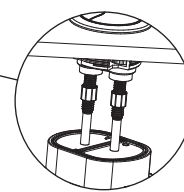


Hoses are not shown on this diagram

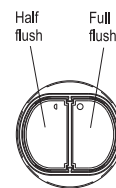
### Push button rod settings



Button rods must be just clear of the valve pads

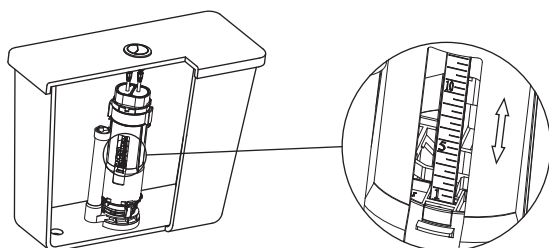


Button rods can be adjusted by screwing up or down



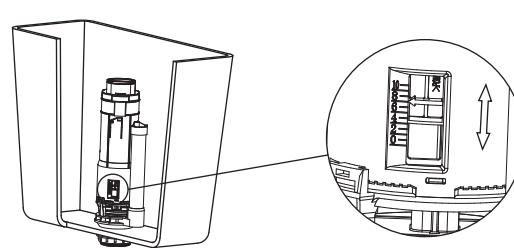
Ensure that buttons match valve pads

### Half flush adjustment



Half flush volume can be adjusted by moving the side float up or down. Moving the float DOWN increases the half flush. Moving the float UP decreases the half flush

### Full flush adjustment



The full flush volume can be adjusted by changing the residual water level in the cistern. Move the adjuster DOWN to increase the volume. Move the adjuster UP to decrease the volume.