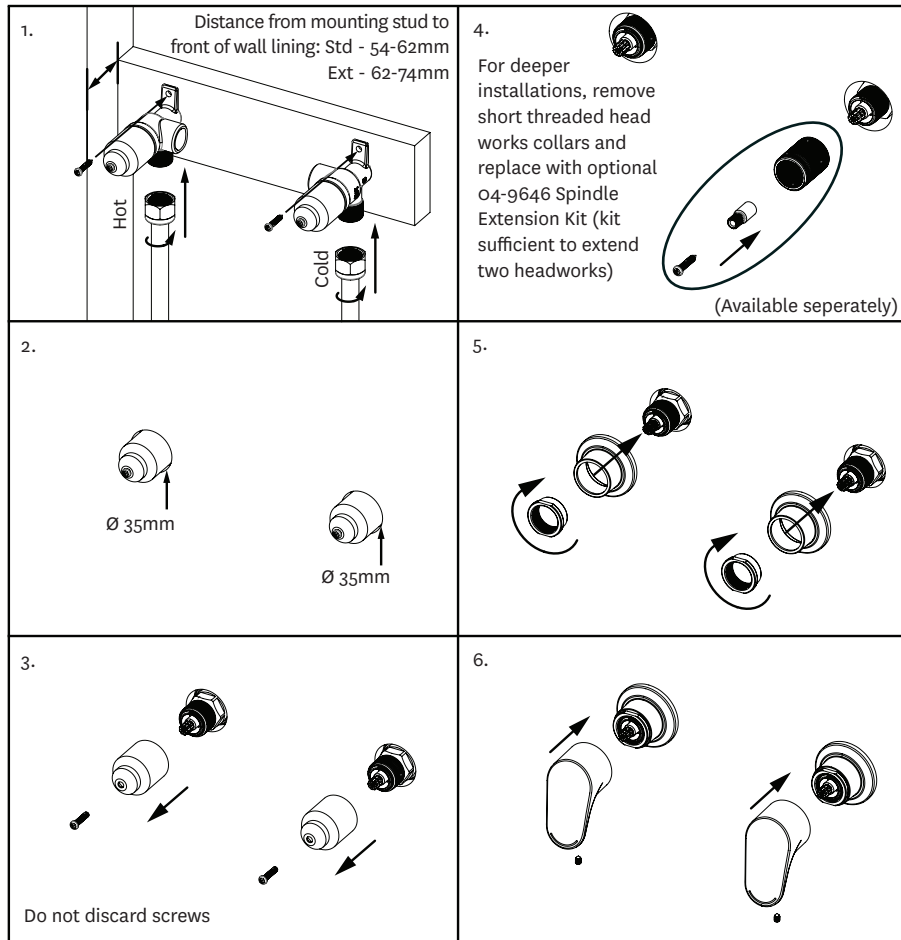


Installation



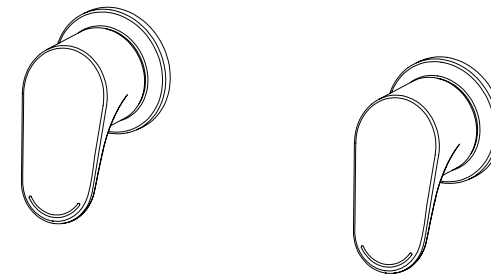
Note: It is the responsibility of the installer to ensure a water proof seal is achieved between the faceplate and the finished surface of the wall. If in any doubt about the quality of the seal, the faceplate should be removed and then reinstalled using silicone to ensure a seal is achieved.

JUNE 2012

MA018840

Maku Wall Top Assembly

O1-8840 (Pair)



Installation Guide

IMPORTANT

Please read all of the instructions before installation

Use of this product is recommended for domestic and commercial applications. All pipework must be thoroughly flushed prior to the installation of the mixer. Inline filter washers must be installed on both hot and cold supplies to prevent foreign particles damaging the ceramic head works. Do not remove the ceramic head works from the wall top assemblies when installing.

Methven recommends a licensed plumber carry out all installations in compliance with the requirements of AS/NZS 3500. This product complies with AS/NZS 3718 regulations.



Methven Australia Pty Ltd

ABN 15 104 813 390
Melbourne, Australia
www.methven.com

www.methven.com

Customer Care Hotline: 1300 METHVEN (638 483)
Email: info@au.methven.com

Technical Specification

Inlet Connections:	All 1/2" BSP
Operating Pressure:	150kPa - 500kPa For optimum performance hot and cold water pressures should be equal. AS/NZS 3500 stipulates a 500kPa maximum operating pressure at any outlet within a building. Where normal pressure exceeds 500kPa, a pressure limiting valve must be installed.
Operating Temperature:	Recommended hot water supply 50°C, maximum 70°C. AS/NZS 3500 requires all hot water supplies to any sanitary fitting to be tempered to 50°C.
Ceramic Head Works:	The ceramic head works can be damaged due to the presence of the following within the water supply: Copper tube pieces Plastic pieces Sand, dirt or stones Thread tape Other objects not normally present in the potable water supplies

Care and Cleaning

Never use abrasives to clean this product. Clean regularly with contamination free warm soapy water and a damp soft cloth.

