



# PHOENIX

## SPECIFICATIONS

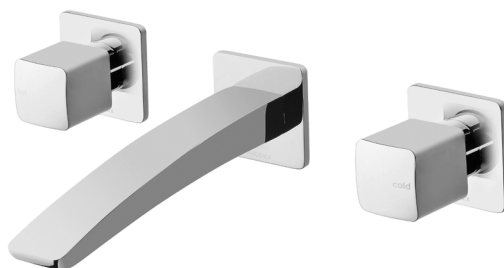
### RUSH

### BASIN WALL SET

PRODUCT CODE: RUI12 CHR  
FINISH: CHROME  
WELS: 5 STAR - 6.0 LT/MIN

#### INFORMATION:

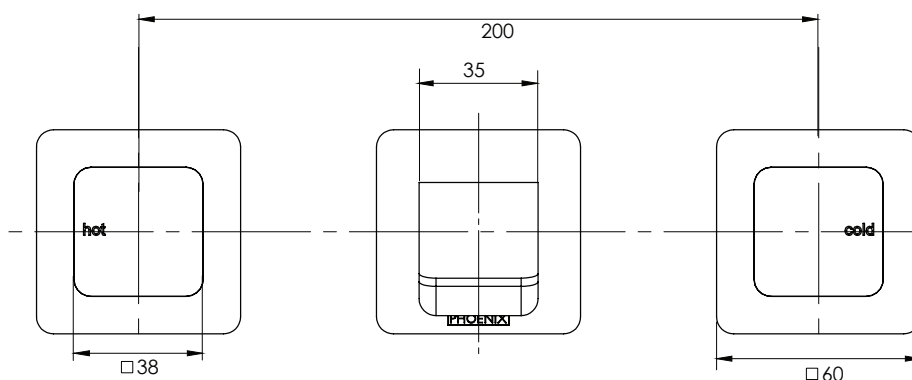
TEMPERATURE RATING: MIN 1° - MAX 75°  
PRESSURE RATING: MIN 150 kPa - MAX 500 kPa



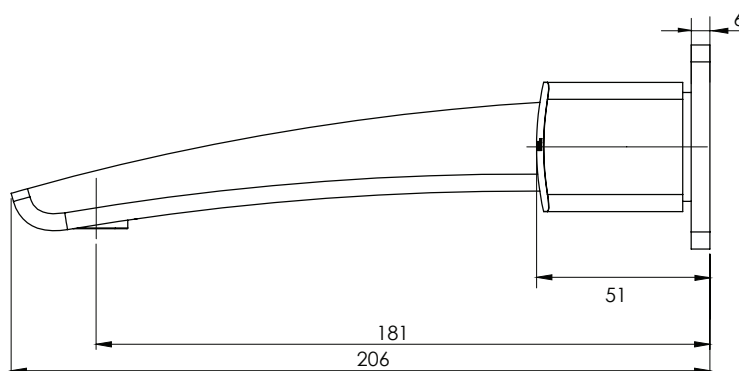
AVAILABLE IN:



CHROME



FOR MORE INFORMATION VISIT  
[www.phoenixtapware.com.au](http://www.phoenixtapware.com.au)



PLEASE [CLICK HERE](#) TO VIEW FULL WARRANTY

While we aim to ensure the specifications shown are correct at time of printing, Phoenix Tapware reserves the right to make modifications without prior notice. Always use the physical product measurements for mark-ups and roughing-in as the line drawing shown may differ from the actual product over time. All measurements are shown in millimetres.

[www.phoenixtapware.com.au](http://www.phoenixtapware.com.au)  
03 9780 4200



# PHOENIX

## SPECIFICATIONS

### RUSH

### BASIN WALL SET

PRODUCT CODE:

RUI12 CHR

FINISH:

CHROME

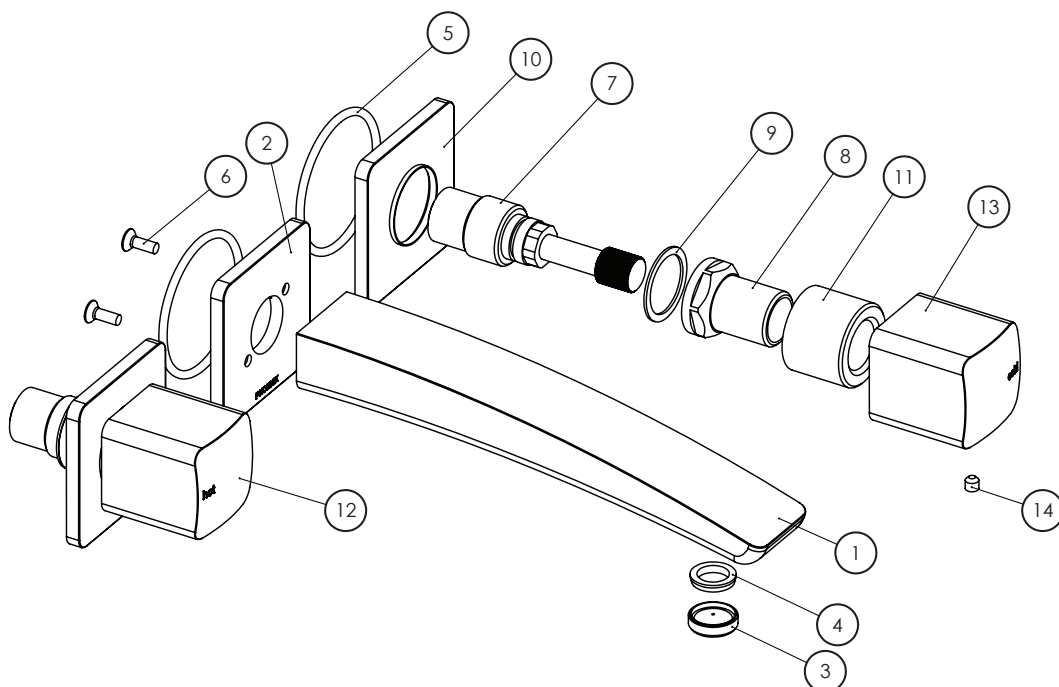
WELS:

5 STAR - 6.0 LT/MIN



#### PARTS LIST

1. SPOUT
2. SPOUT DRESS PLATE
3. AERATOR
4. AERATOR GASKET
5. O-RING
6. SCREW M4X12
7. CERAMIC DISC CARTRIDGE
8. 33MM BONNET
9. FIBER WASHER
10. TAP DRESS PLATE
11. HANDLE FLANGE
12. HOT HANDLE
13. COLD HANDLE
14. GRUB SCREW M5X5



#### MAINTENANCE AND CARE:

- All surfaces should be cleaned with mild liquid detergent or soap and water.
- Do not use cream cleaners or citrus based cleaning products, as they are abrasive.
- Use of unsuitable cleaning agents may damage the surface. Any damage caused in this way will not be covered by warranty.

#### PACKAGING INCLUDES

- 1 x Spout
- 1 x Spout dress plate
- 1 x Hot tap
- 1 x Cold tap
- 2 x Taps dress plate
- 1 x Installation kit
- 1 x Installation instructions
- 1 x Warranty card

PLEASE [CLICK HERE](#) TO VIEW FULL WARRANTY

While we aim to ensure the specifications shown are correct at time of printing, Phoenix Tapware reserves the right to make modifications without prior notice. Always use the physical product measurements for mark-ups and roughing-in as the line drawing shown may differ from the actual product over time. All measurements are shown in millimetres.

[www.phoenixtapware.com.au](http://www.phoenixtapware.com.au)  
03 9780 4200