



PHOENIX

SPECIFICATIONS

RUSH

WALL BASIN OUTLET 280MM



PRODUCT CODE: RU771 CHR
 FINISH: CHROME
 WELS: 5 STAR - 6.0 LT/MIN

INFORMATION:

MATERIAL: BRASS
 TEMPERATURE RATING: MIN 1° - MAX 75°
 PRESSURE RATING: MIN 150 kPa - MAX 500 kPa

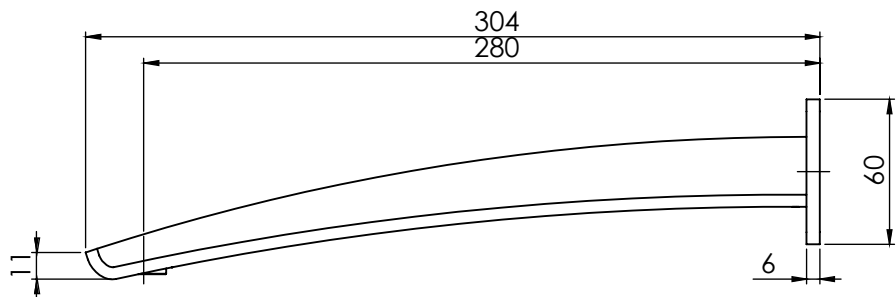
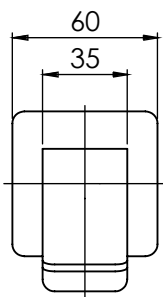
CONSUMER UNIT:

SIZE: L 350MM x W 60MM x H 60MM
 GROSS WEIGHT: 1.1 KG
 BARCODE EAN-13: 9 320594 018 054

AVAILABLE IN:



FOR MORE INFORMATION VISIT www.phoenixtapware.com



PLEASE [CLICK HERE](#) TO VIEW FULL WARRANTY

While we aim to ensure the specifications shown are correct at time of printing, Phoenix Tapware reserves the right to make modifications without prior notice. Always use the physical product measurements for mark-ups and roughing-in as the line drawing shown may differ from the actual product over time. All measurements are shown in millimetres.

www.phoenixtapware.com.au
03 9780 4200



PHOENIX

SPECIFICATIONS

RUSH

WALL BASIN OUTLET 280MM

PRODUCT CODE:

RU771 CHR

FINISH:

CHROME

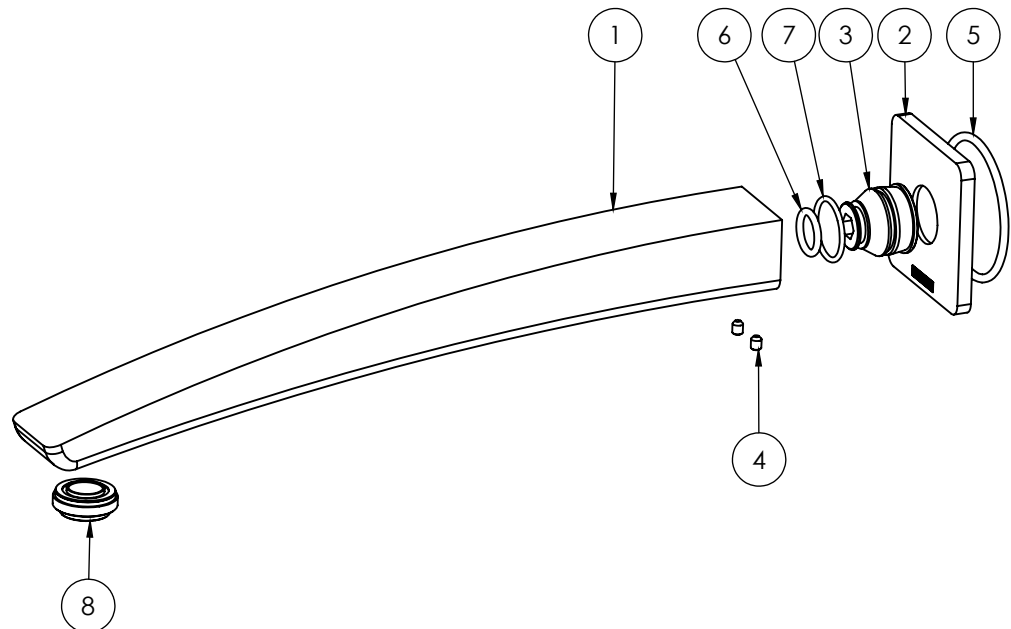
WELS:

5 STAR - 6.0 LT/MIN



PARTS LIST

1. SPOUT 280MM
2. BACKPLATE
3. G1/2" SPOUT ADAPTER
4. GRUB SCREW M4X5MM
5. O-RING 50X3.0MM
6. O-RING 13X2.6MM
7. O-RING 21X1.9MM
8. AERATOR



MAINTENANCE AND CARE:

- All surfaces should be cleaned with mild liquid detergent or soap and water.
- Do not use cream cleaners or citrus based cleaning products, as they are abrasive.
- Use of unsuitable cleaning agents may damage the surface. Any damage caused in this way will not be covered by warranty.

PACKAGING INCLUDES

- 1 x Wall Basin Outlet 280mm
- 1 x Installation kit
- 1 x Installation instructions
- 1 x Warranty card

PLEASE [CLICK HERE](#) TO VIEW FULL WARRANTY

While we aim to ensure the specifications shown are correct at time of printing, Phoenix Tapware reserves the right to make modifications without prior notice. Always use the physical product measurements for mark-ups and roughing-in as the line drawing shown may differ from the actual product over time. All measurements are shown in millimetres.

www.phoenixtapware.com.au
03 9780 4200