



PHOENIX

SPECIFICATIONS

VIVID

FLOOR MOUNTED BATH OUTLET 940MM

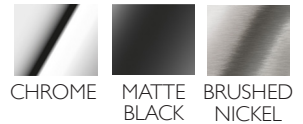
PRODUCT CODE:	V819 CHR
FINISH:	CHROME
WELS:	N/A

INFORMATION:

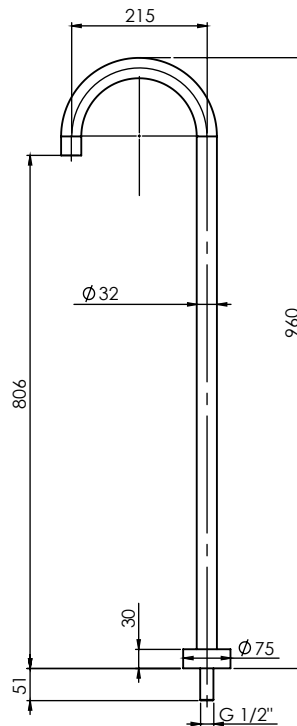
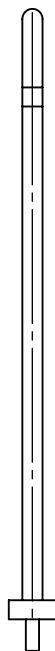
TEMPERATURE RATING:	MIN 1° - MAX 75°
PRESSURE RATING:	MIN 150 kPa - MAX 500 kPa



AVAILABLE IN:



FOR MORE INFORMATION VISIT
www.phoenixtapware.com.au



PLEASE [CLICK HERE](#) TO VIEW FULL WARRANTY

While we aim to ensure the specifications shown are correct at time of printing, Phoenix Tapware reserves the right to make modifications without prior notice. Always use the physical product measurements for mark-ups and roughing-in as the line drawing shown may differ from the actual product over time. All measurements are shown in millimetres.

www.phoenixtapware.com.au
03 9780 4200



PHOENIX

SPECIFICATIONS

VIVID

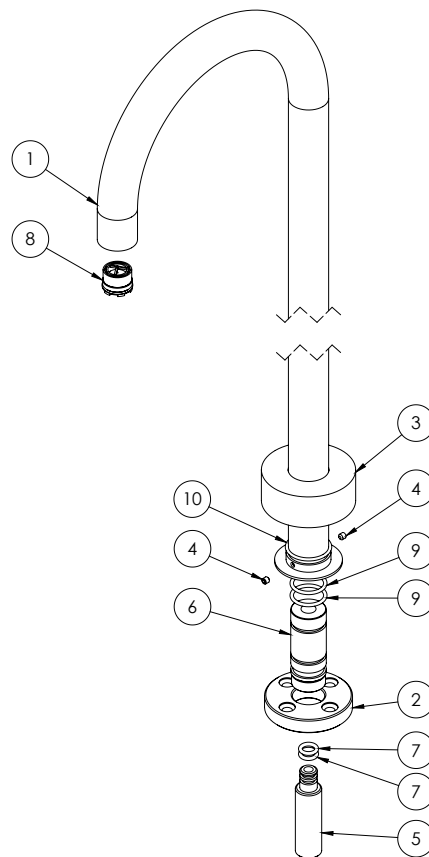
FLOOR MOUNTED BATH OUTLET 940MM

PRODUCT CODE: V819 CHR
FINISH: CHROME
WELS: N/A



PARTS LIST

1. SPOUT
2. MOUNT PLATE
3. DRESS PLATE
4. GRUB SCREW M5X5MM
5. THREADED TAIL
6. HOB SPIGOT
7. O-RING 10X3.0MM
8. AERATOR MAX FLOW
9. O-RING 24X2.75MM
10. O-RING 32X2.5MM



MAINTENANCE AND CARE:

- All surfaces should be cleaned with mild liquid detergent or soap and water.
- Do not use cream cleaners or citrus based cleaning products, as they are abrasive.
- Use of unsuitable cleaning agents may damage the surface. Any damage caused in this way will not be covered by warranty.

PACKAGING INCLUDES

- 1 x Floor mounted bath outlet 940mm
- 1 x Installation kit
- 1 x Installation instructions
- 1 x Warranty card

PLEASE [CLICK HERE](#) TO VIEW FULL WARRANTY

While we aim to ensure the specifications shown are correct at time of printing, Phoenix Tapware reserves the right to make modifications without prior notice. Always use the physical product measurements for mark-ups and roughing-in as the line drawing shown may differ from the actual product over time. All measurements are shown in millimetres.

www.phoenixtapware.com.au
03 9780 4200