



# PHOENIX

## SPECIFICATIONS

### NARA

### BASIN MIXER

PRODUCT CODE: 101-7700-00  
 FINISH: CHROME  
 WELS: 5 STAR - 5.0 LT/MIN

#### INFORMATION:

TEMPERATURE RATING: MIN 1° - MAX 75°  
 PRESSURE RATING: MIN 150 kPa - MAX 500 kPa

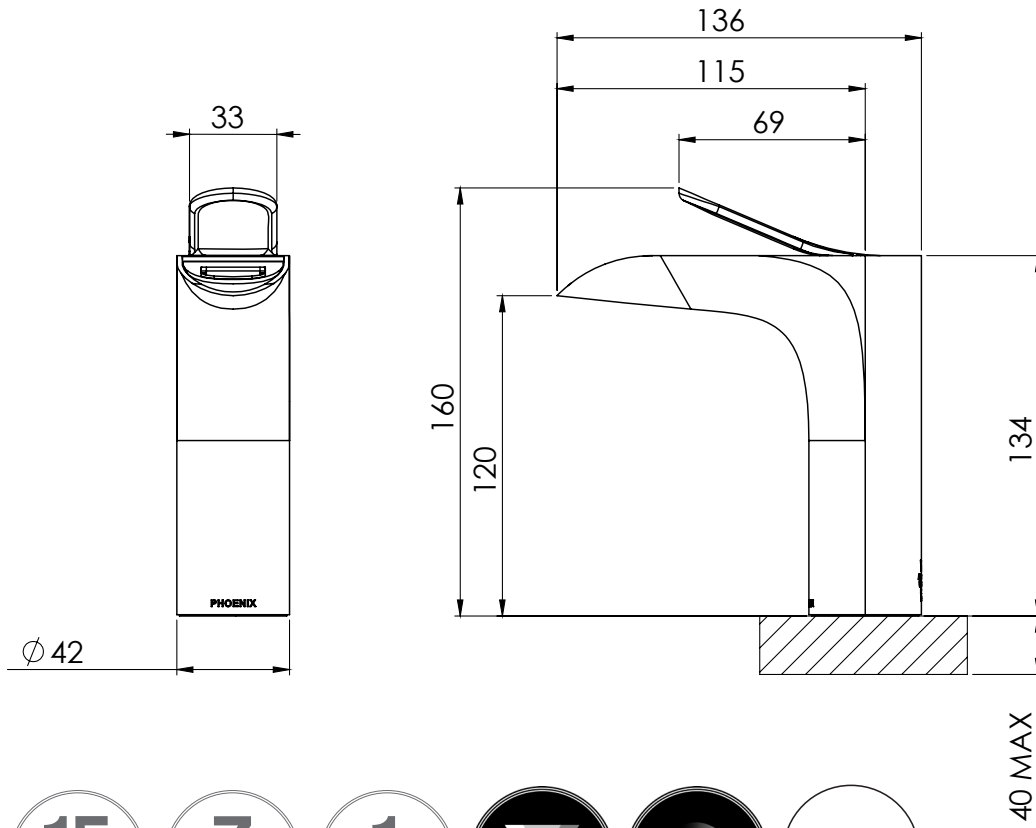


AVAILABLE IN:



CHROME

FOR MORE INFORMATION VISIT  
[www.phoenixtapware.com.au](http://www.phoenixtapware.com.au)



PLEASE [CLICK HERE](#) TO VIEW FULL WARRANTY

While we aim to ensure the specifications shown are correct at time of printing, Phoenix Tapware reserves the right to make modifications without prior notice. Always use the physical product measurements for mark-ups and roughing-in as the line drawing shown may differ from the actual product over time. All measurements are shown in millimetres.

A Registered Design and Trademark of Phoenix Industries Pty. Ltd  
V201216

[www.phoenixtapware.com.au](http://www.phoenixtapware.com.au)  
03 9780 4200



# PHOENIX

## SPECIFICATIONS

### NARA

### BASIN MIXER

PRODUCT CODE:

101-7700-00

FINISH:

CHROME

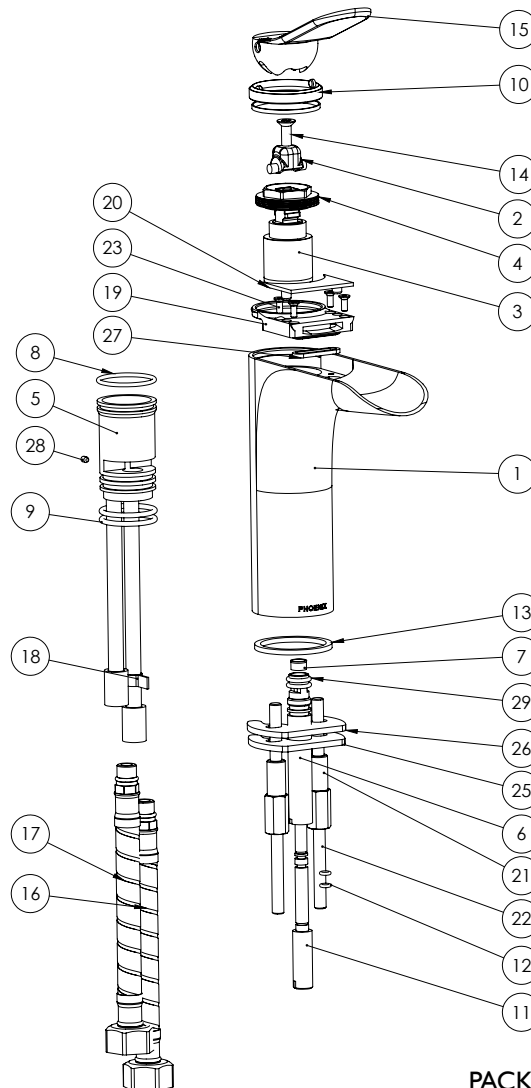
WELS:

5 STAR - 5.0 LT/MIN



#### PARTS LIST

1. MIXER BODY
2. STEM GLIDER
3. 35MM CARTRIDGE
4. LOCKNUT
5. CARTRIDGE SEAT
6. RETAINER
7. AERATOR
8. O-RING 27X2.0MM
9. O-RING 25X2.5MM
10. PIVOT WASHER
11. FLOW PIN
12. O-RING 4X1.5MM
13. SEALING WASHER
14. FLAT HEAD SCREW
15. LEVER
16. 450MM FLEXIBLE HOSE HOT
17. 450MM FLEXIBLE HOSE COLD
18. INDICATOR RED TAPE
19. TOP FIXTURE
20. COVER PLATE
21. M6 THREADED NUT
22. M6 THREADED ROD
23. SCREW M3X8
24. MOUNTING PLATE
25. MOUNTING GASKET
26. GASKET
27. GRUB SCREW
28. O-RING 9X2.0MM



#### MAINTENANCE AND CARE:

- All surfaces should be cleaned with mild liquid detergent or soap and water.
- Do not use cream cleaners or citrus based cleaning products, as they are abrasive.
- Use of unsuitable cleaning agents may damage the surface. Any damage caused in this way will not be covered by warranty.

#### PACKAGING INCLUDES

- 1 x Mixer body
- 1 x 450mm braided flexible cold hose
- 1 x 450mm braided flexible hot hose
- 1 x Installation kit
- 1 x Installation instructions
- 1 x Warranty card

PLEASE [CLICK HERE](#) TO VIEW FULL WARRANTY

While we aim to ensure the specifications shown are correct at time of printing, Phoenix Tapware reserves the right to make modifications without prior notice. Always use the physical product measurements for mark-ups and roughing-in as the line drawing shown may differ from the actual product over time. All measurements are shown in millimetres.

A Registered Design and Trademark of Phoenix Industries Pty. Ltd  
V201216

[www.phoenixtapware.com.au](http://www.phoenixtapware.com.au)  
03 9780 4200