



PHOENIX

MEKKO

SHOWER / WALL MIXER

PRODUCT CODE: 115-7800-30
FINISH: GUN METAL
WELS: N/A

INFORMATION:

TEMPERATURE RATING: MIN 1° - MAX 75°
PRESSURE RATING: MIN 150 kPa - MAX 500 kPa

SPECIFICATIONS

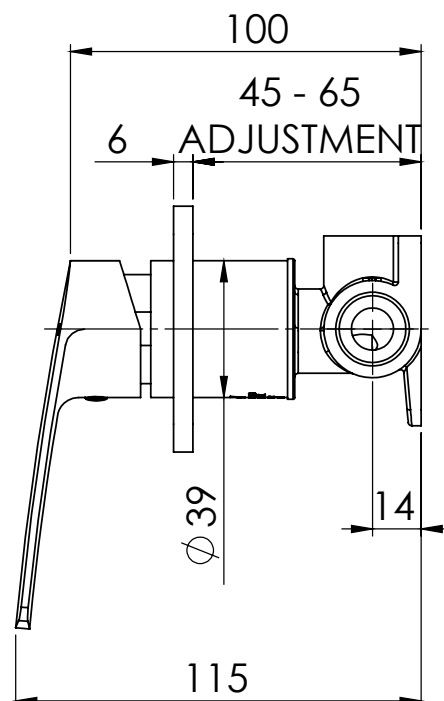
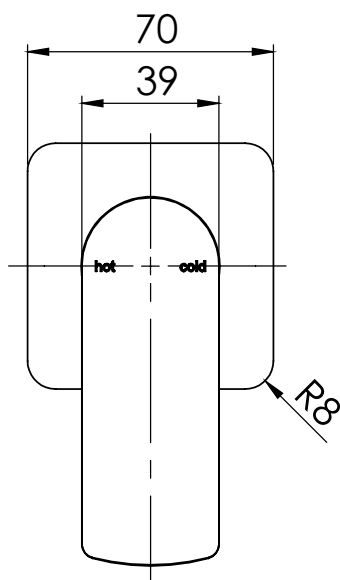


AVAILABLE IN:



CHROME MATTE BLACK BRUSHED NICKEL GUN METAL

FOR MORE INFORMATION VISIT
www.phoenixtapware.com.au



PLEASE [CLICK HERE](#) TO VIEW FULL WARRANTY

While we aim to ensure the specifications shown are correct at time of printing, Phoenix Tapware reserves the right to make modifications without prior notice. Always use the physical product measurements for mark-ups and roughing-in as the line drawing shown may differ from the actual product over time. All measurements are shown in millimetres.

Designed and Registered in Australia by Phoenix Industries Pty. Ltd
V190618

www.phoenixtapware.com.au
03 9780 4200



PHOENIX

SPECIFICATIONS

MEKKO

SHOWER / WALL MIXER

PRODUCT CODE:

115-7800-30

FINISH:

GUN METAL

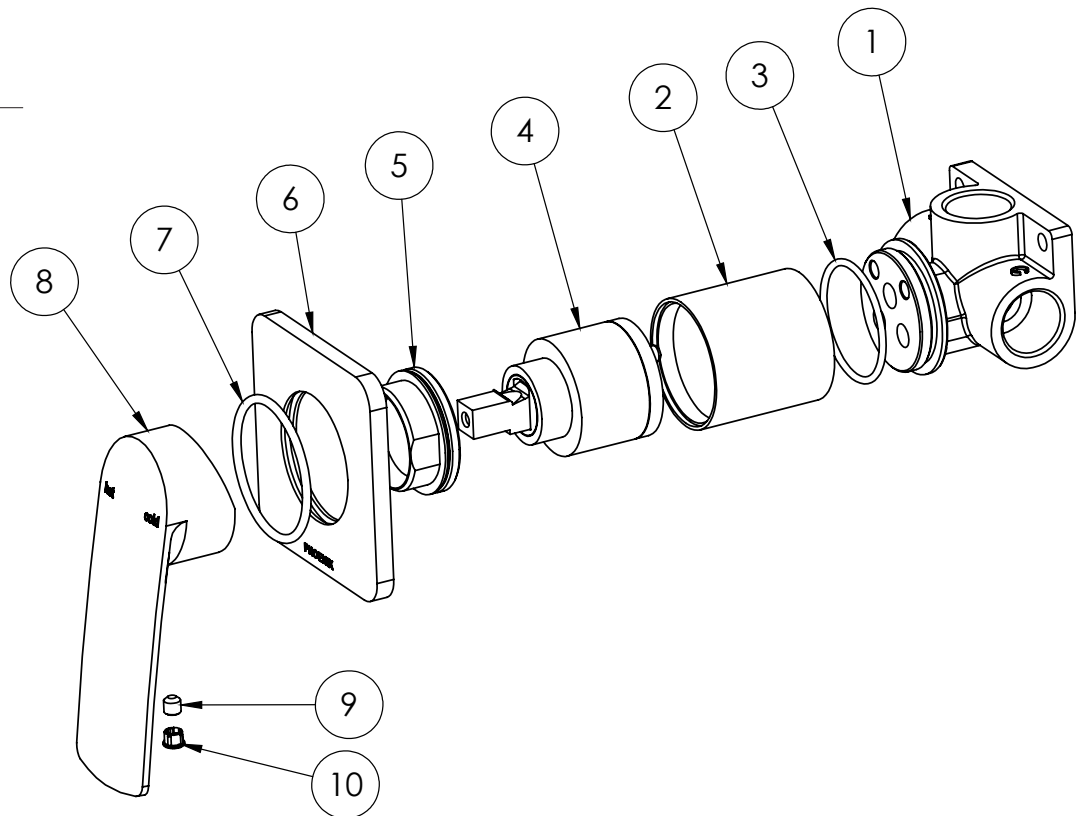
WELS:

N/A



PARTS LIST

1. MIXER BODY
2. SLEEVE
3. O-RING 33X2.0
4. 35MM CARTRIDGE
5. DOME
6. DRESS PLATE
7. O-RING 39X2.5
8. HANDLE
9. GRUB SCREW M5X5
10. SCREW CAP



MAINTENANCE AND CARE:

- All surfaces should be cleaned with mild liquid detergent or soap and water.
- Do not use cream cleaners or citrus based cleaning products, as they are abrasive.
- Use of unsuitable cleaning agents may damage the surface. Any damage caused in this way will not be covered by warranty.

PACKAGING INCLUDES

- 1 x Mixer body
- 1 x Handle
- 1 x Dress plate
- 1 x Installation kit
- 1 x Installation instructions
- 1 x Warranty card

PLEASE [CLICK HERE](#) TO VIEW FULL WARRANTY

While we aim to ensure the specifications shown are correct at time of printing, Phoenix Tapware reserves the right to make modifications without prior notice. Always use the physical product measurements for mark-ups and roughing-in as the line drawing shown may differ from the actual product over time. All measurements are shown in millimetres.

Designed and Registered in Australia by Phoenix Industries Pty. Ltd

V190618

www.phoenixtapware.com.au
03 9780 4200