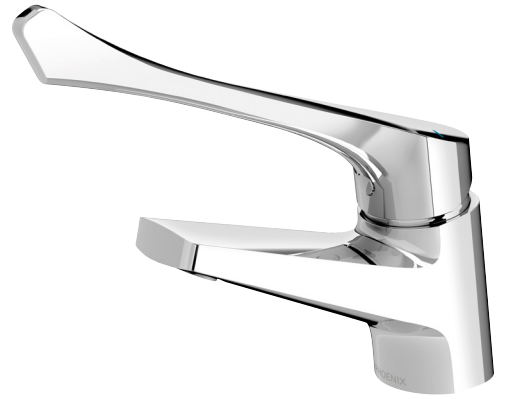


IVY MKII EXTENDED
BASIN MIXER FIXED

PRODUCT CODE:	155-7700-00
FINISH:	CHROME
WELS:	4 STAR - 6.5 LT/MIN

INFORMATION:

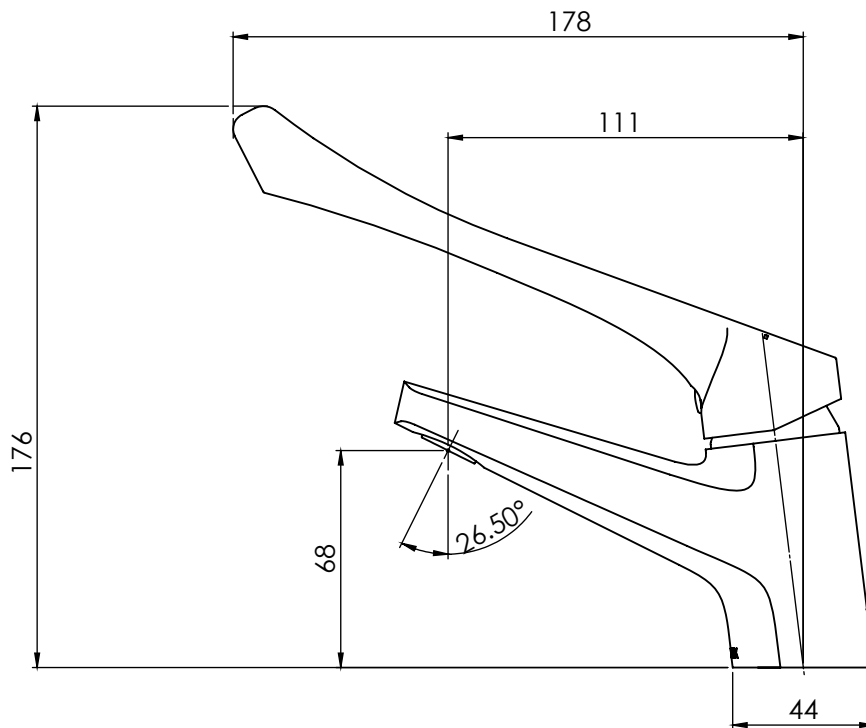
TEMPERATURE RATING:	MIN 1° - MAX 75°
PRESSURE RATING:	MIN 150 kPa - MAX 500 kPa



AVAILABLE IN:



CHROME

 FOR MORE INFORMATION VISIT
www.phoenixtapware.com.au

 PLEASE [CLICK HERE TO VIEW FULL WARRANTY](#)

While we aim to ensure the specifications shown are correct at time of printing, Phoenix Tapware reserves the right to make modifications without prior notice. Always use the physical product measurements for mark-ups and roughing-in as the line drawing shown may differ from the actual product over time. All measurements are shown in millimetres.

www.phoenixtapware.com.au
 03 9780 4200



IVY MKII EXTENDED

BASIN MIXER FIXED

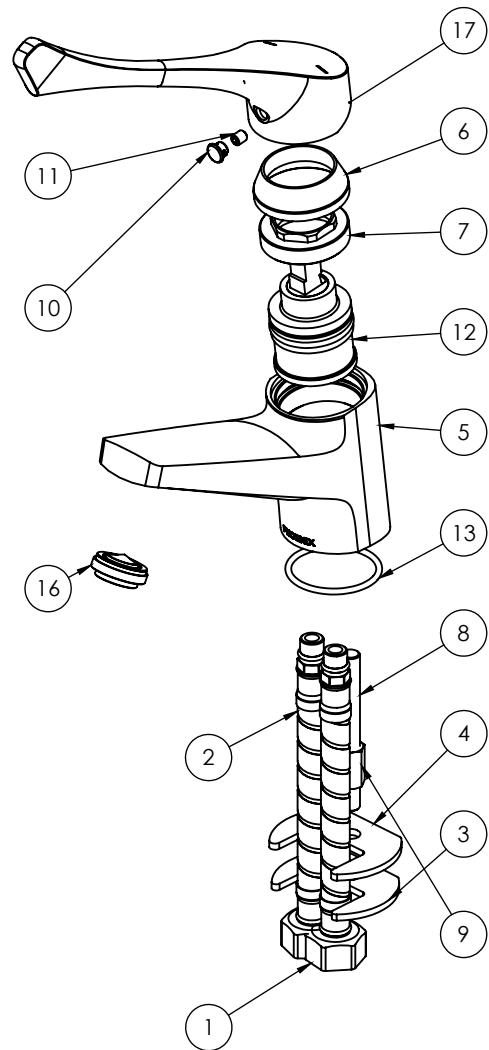
PRODUCT CODE: 155-7700-00
FINISH: CHROME
WELS: 4 STAR - 6.5 LT/MIN

PARTS LIST

1. FLEXIBLE HOSE 350MM COLD
2. FLEXIBLE HOSE 350MM HOT
3. FIXING PLATE
4. RUBBER GASKET
5. MIXER BODY
6. MIXER DOME
7. MIXER LOCKNUT
8. THREADED ROD M8X75MM
9. THREADED NUT
10. SCREW CAP
11. GRUB SCREW M5X6
12. 35MM CARTRIDGE
13. O-RING 36X2.5MM
14. ALLEN KEY
15. AERATOR KEY
16. AERATOR
17. MIXER EXTENDED HANDLE

MAINTENANCE AND CARE:

- All surfaces should be cleaned with mild liquid detergent or soap and water.
- Do not use cream cleaners or citrus based cleaning products, as they are abrasive.
- Use of unsuitable cleaning agents may damage the surface. Any damage caused in this way will not be covered by warranty.



PLEASE [CLICK HERE TO VIEW FULL WARRANTY](#)

While we aim to ensure the specifications shown are correct at time of printing, Phoenix Tapware reserves the right to make modifications without prior notice. Always use the physical product measurements for mark-ups and roughing-in as the line drawing shown may differ from the actual product over time. All measurements are shown in millimetres.

www.phoenixtapware.com.au
03 9780 4200