

# IVY MKII EXTENDED

## BASIN MIXER SWIVEL

PRODUCT CODE: 155-7710-00  
 FINISH: CHROME  
 WELS: 4 STAR - 6.5 LT/MIN

**INFORMATION:**

TEMPERATURE RATING: MIN 1° - MAX 75°  
 PRESSURE RATING: MIN 150 kPa - MAX 500 kPa

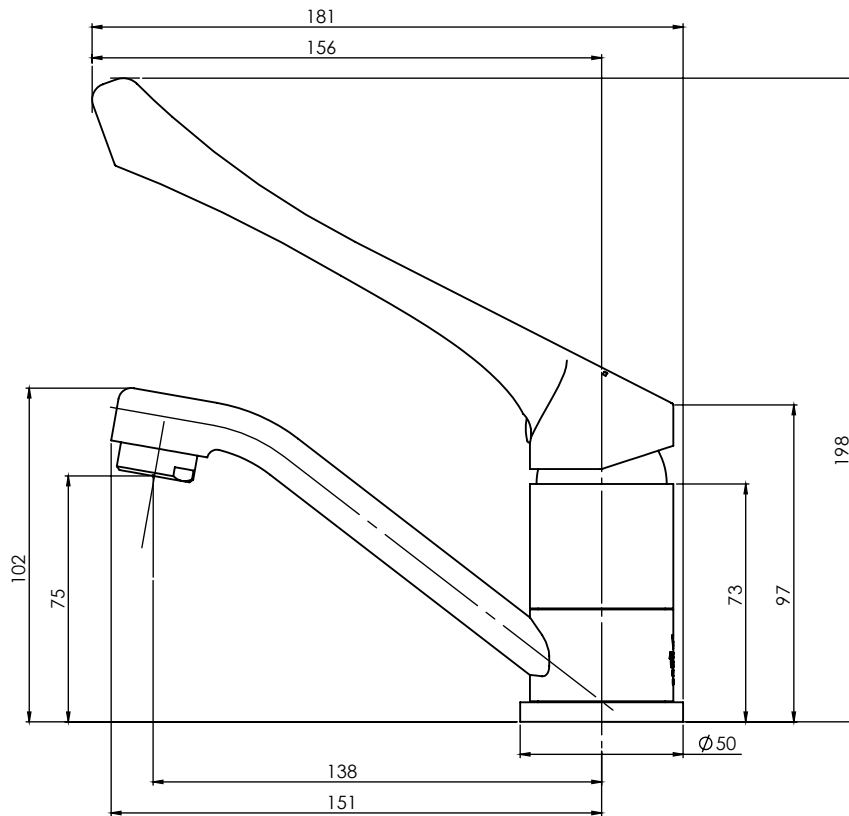


AVAILABLE IN:



CHROME

FOR MORE INFORMATION VISIT  
[www.phoenixtapware.com.au](http://www.phoenixtapware.com.au)



PLEASE [CLICK HERE TO VIEW FULL WARRANTY](#)

While we aim to ensure the specifications shown are correct at time of printing, Phoenix Tapware reserves the right to make modifications without prior notice. Always use the physical product measurements for mark-ups and roughing-in as the line drawing shown may differ from the actual product over time. All measurements are shown in millimetres.

[www.phoenixtapware.com.au](http://www.phoenixtapware.com.au)  
 03 9780 4200

# IVY MKII EXTENDED

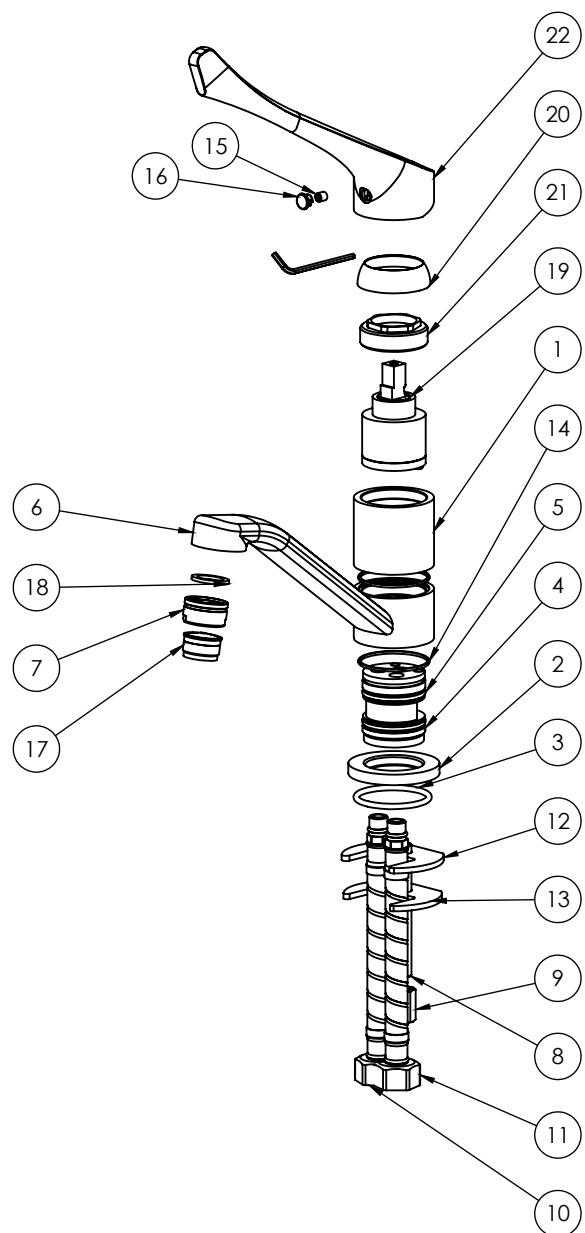
## BASIN MIXER SWIVEL

PRODUCT CODE: 155-7710-00  
 FINISH: CHROME  
 WELS: 4 STAR - 6.5 LT/MIN



### PARTS LIST

1. MIXER BODY
2. DRESS PLATE
3. O-RING 37X3MM
4. CARTRIDGE SEAT
5. MIXER SEAL
6. MIXER SPOUT
7. AERATOR HOUSING
8. THREADED ROD M8X75MM
9. THREADED NUT
10. FLEXIBLE HOSE 350MM HOT
11. FLEXIBLE HOSE 350MM COLD
12. RUBBER GASKET
13. FIXING PLATE
14. TEFLON BEARING
15. GRUB SCREW M5X6
16. SCREW CAP
17. AERATOR
18. AERATOR WASHER
19. 35MM CARTRIDGE
20. MIXER DOME
21. CARTRIDGE LOCKNUT
22. MIXER EXTENDED HANDLE



### MAINTENANCE AND CARE:

- All surfaces should be cleaned with mild liquid detergent or soap and water.
- Do not use cream cleaners or citrus based cleaning products, as they are abrasive.
- Use of unsuitable cleaning agents may damage the surface. Any damage caused in this way will not be covered by warranty.

PLEASE [CLICK HERE TO VIEW FULL WARRANTY](#)

While we aim to ensure the specifications shown are correct at time of printing, Phoenix Tapware reserves the right to make modifications without prior notice. Always use the physical product measurements for mark-ups and roughing-in as the line drawing shown may differ from the actual product over time. All measurements are shown in millimetres.

[www.phoenixtapware.com.au](http://www.phoenixtapware.com.au)  
03 9780 4200